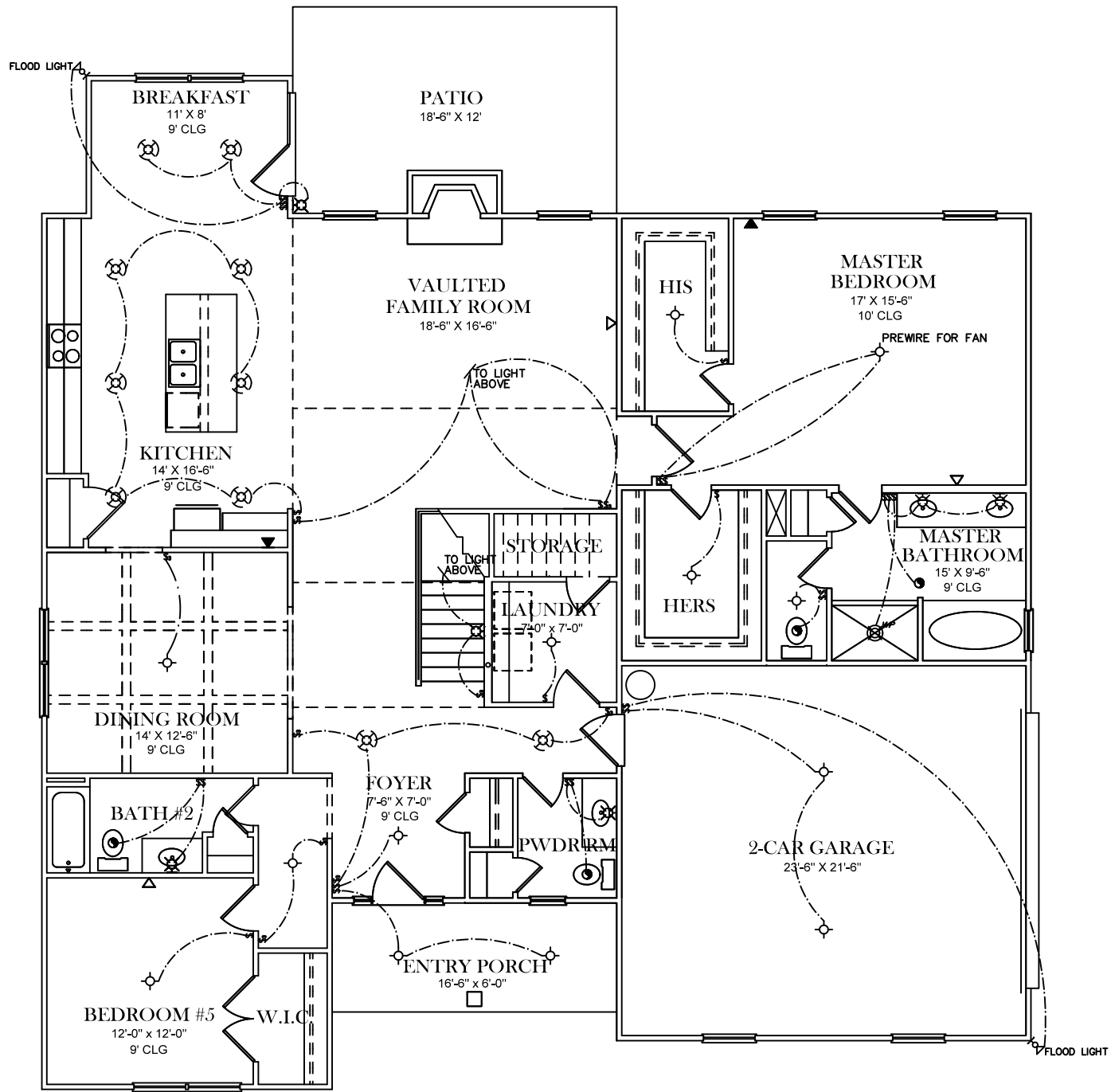











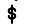







FRONT ELEVATION

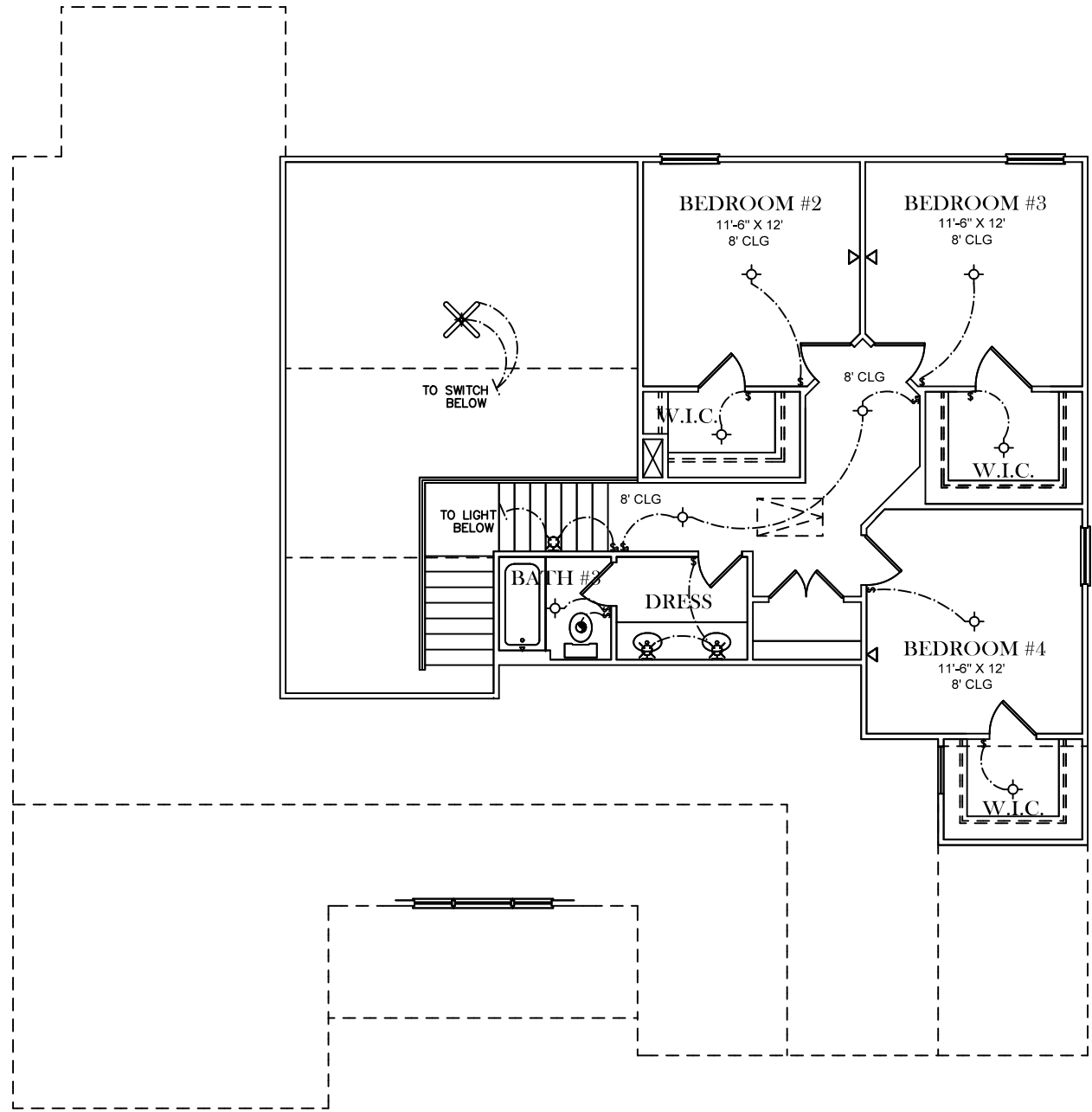
| SQUARE FOOTAGES | |
|-----------------|-------|
| 1ST FL- | 2,269 |
| SECOND FL- | 802 |
| TOTAL SQ. FT.- | 3,071 |



ELECTRICAL LEGEND

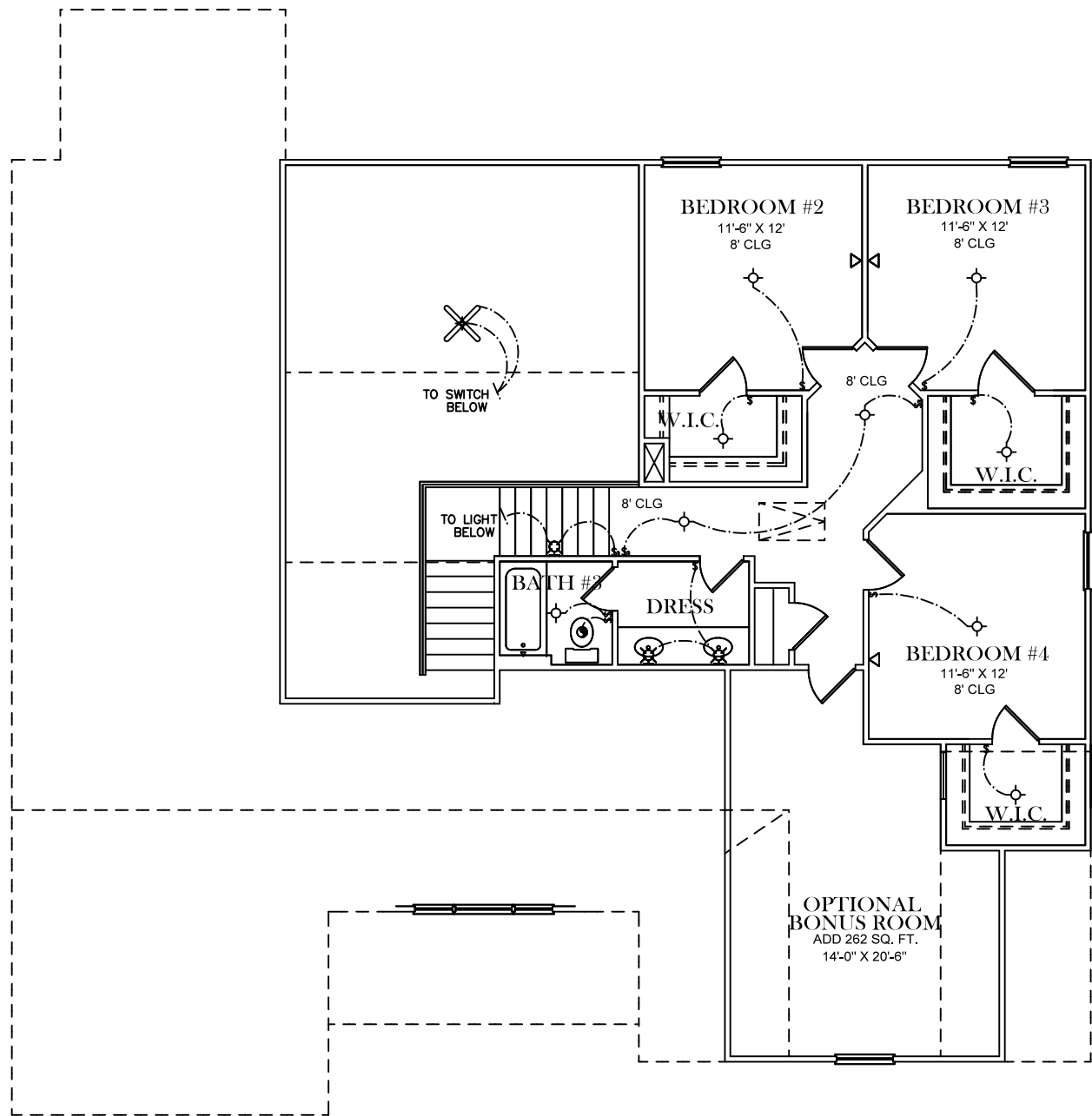
-  CEILING LIGHT FIXTURE
-  WALL LIGHT FIXTURE
-  RECESSED LIGHT FIXTURE
-  WATER PROOF RECESSED LIGHT FIXTURE
-  FLOOD LIGHT FIXTURE
-  DUPLEX OUTLET
-  DUPLEX OUTLET 42" A.F.F.
-  220 VOLT OUTLET
-  DUPLEX CEILING OUTLET
-  DUPLEX FLOOR OUTLET
-  SWITCHED DUPLEX OUTLET
-  TELEPHONE
-  TELEVISION
-  SWITCH
-  3-WAY SWITCH
-  EXHAUST FAN
-  EXHAUST FAN/LIGHT

FIRST FLOOR PLAN



| ELECTRICAL LEGEND | |
|-------------------|------------------------------------|
| | CEILING LIGHT FIXTURE |
| | WALL LIGHT FIXTURE |
| | RECESSED LIGHT FIXTURE |
| | WATER PROOF RECESSED LIGHT FIXTURE |
| | FLOOD LIGHT FIXTURE |
| | DUPLEX OUTLET |
| | DUPLEX OUTLET 42" A.F.F. |
| | 220 VOLT OUTLET |
| | DUPLEX CEILING OUTLET |
| | DUPLEX FLOOR OUTLET |
| | SWITCHED DUPLEX OUTLET |
| | TELEPHONE |
| | TELEVISION |
| | SWITCH |
| | 3-WAY SWITCH |
| | EXHAUST FAN |
| | EXHAUST FAN/LIGHT |

SECOND FLOOR PLAN



| ELECTRICAL LEGEND | |
|-------------------|------------------------------------|
| | CEILING LIGHT FIXTURE |
| | WALL LIGHT FIXTURE |
| | RECESSED LIGHT FIXTURE |
| | WATER PROOF RECESSED LIGHT FIXTURE |
| | FLOOD LIGHT FIXTURE |
| | DUPLEX OUTLET |
| | DUPLEX OUTLET 42" A.F.F. |
| | 220 VOLT OUTLET |
| | DUPLEX CEILING OUTLET |
| | DUPLEX FLOOR OUTLET |
| | SWITCHED DUPLEX OUTLET |
| | TELEPHONE |
| | TELEVISION |
| | SWITCH |
| | 3-WAY SWITCH |
| | EXHAUST FAN |
| | EXHAUST FAN/LIGHT |

SECOND FLOOR PLAN