

FRONT ELEVATION - A VERSION

WOODBURY
SIDE ENTRY VERSION



SQUARE FOOTAGE:	
FIRST FLOOR:	3,014 SQ. FT.
SECOND FLOOR:	688 SQ. FT.
TOTAL:	3,702 SQ. FT.

*THE DRAWING(S) ON THIS PAGE ARE A GRAPHICAL REPRESENTATION ONLY. PLEASE CONSULT YOUR AGENT FOR SPECIFIC INFORMATION REGARDING THIS FLOOR PLAN. THE DESIGN OF THE FLOOR PLAN REPRESENTED IS SUBJECT TO CHANGE WITHOUT NOTICE.



REAR ELEVATION - STANDARD PATIO



REAR ELEVATION - EXPANDED PATIO OPTION

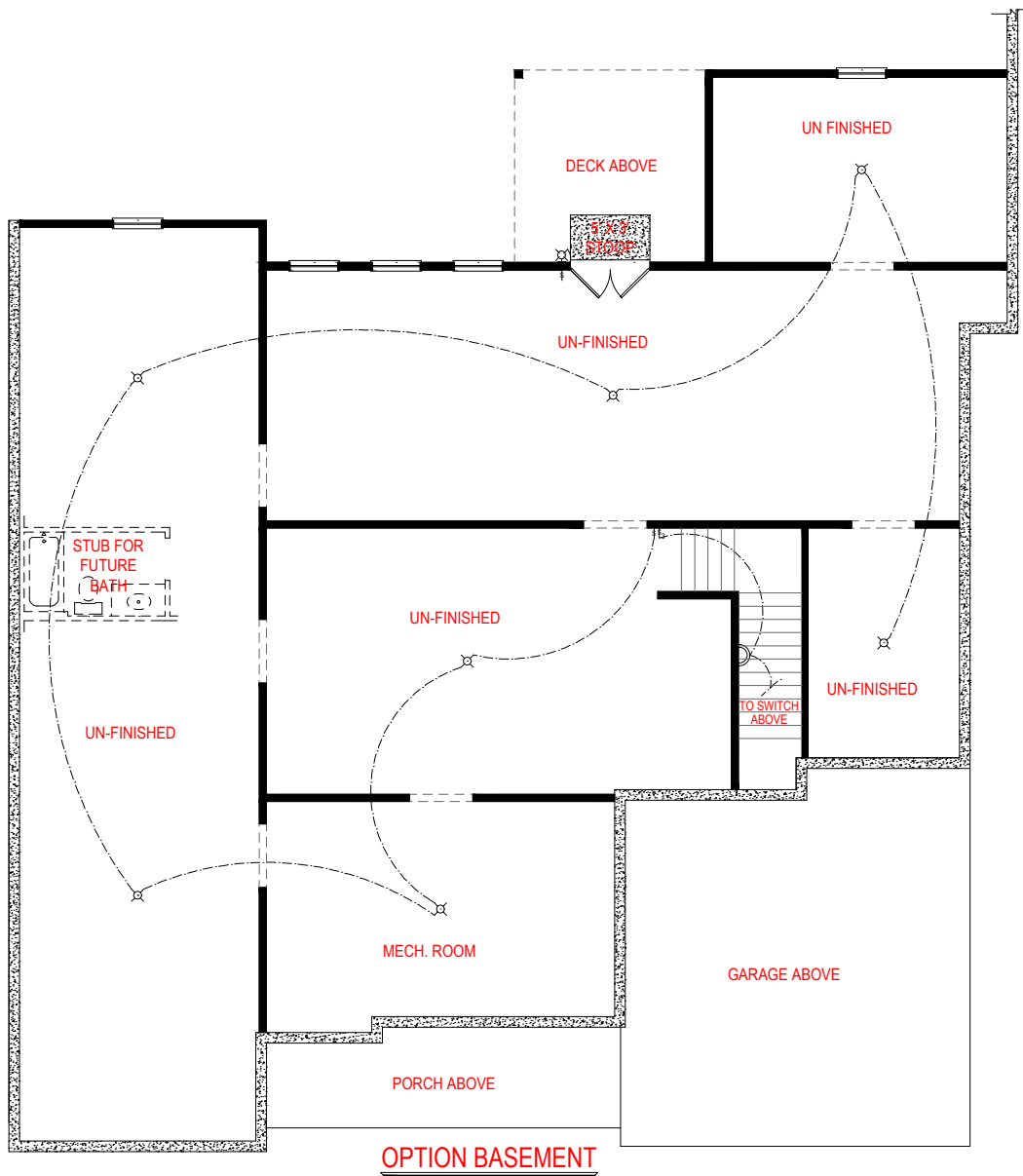
WOODBURY

SIDE ENTRY VERSION



*THE DRAWING(S) ON THIS PAGE ARE A GRAPHICAL REPRESENTATION ONLY. PLEASE CONSULT YOUR AGENT FOR SPECIFIC INFORMATION REGARDING THIS FLOOR PLAN. THE DESIGN OF THE FLOOR PLAN REPRESENTED IS SUBJECT TO CHANGE WITHOUT NOTICE.

SQUARE FOOTAGE:	
FIRST FLOOR:	3,014 SQ. FT.
SECOND FLOOR:	688 SQ. FT.
TOTAL:	3,702 SQ. FT.



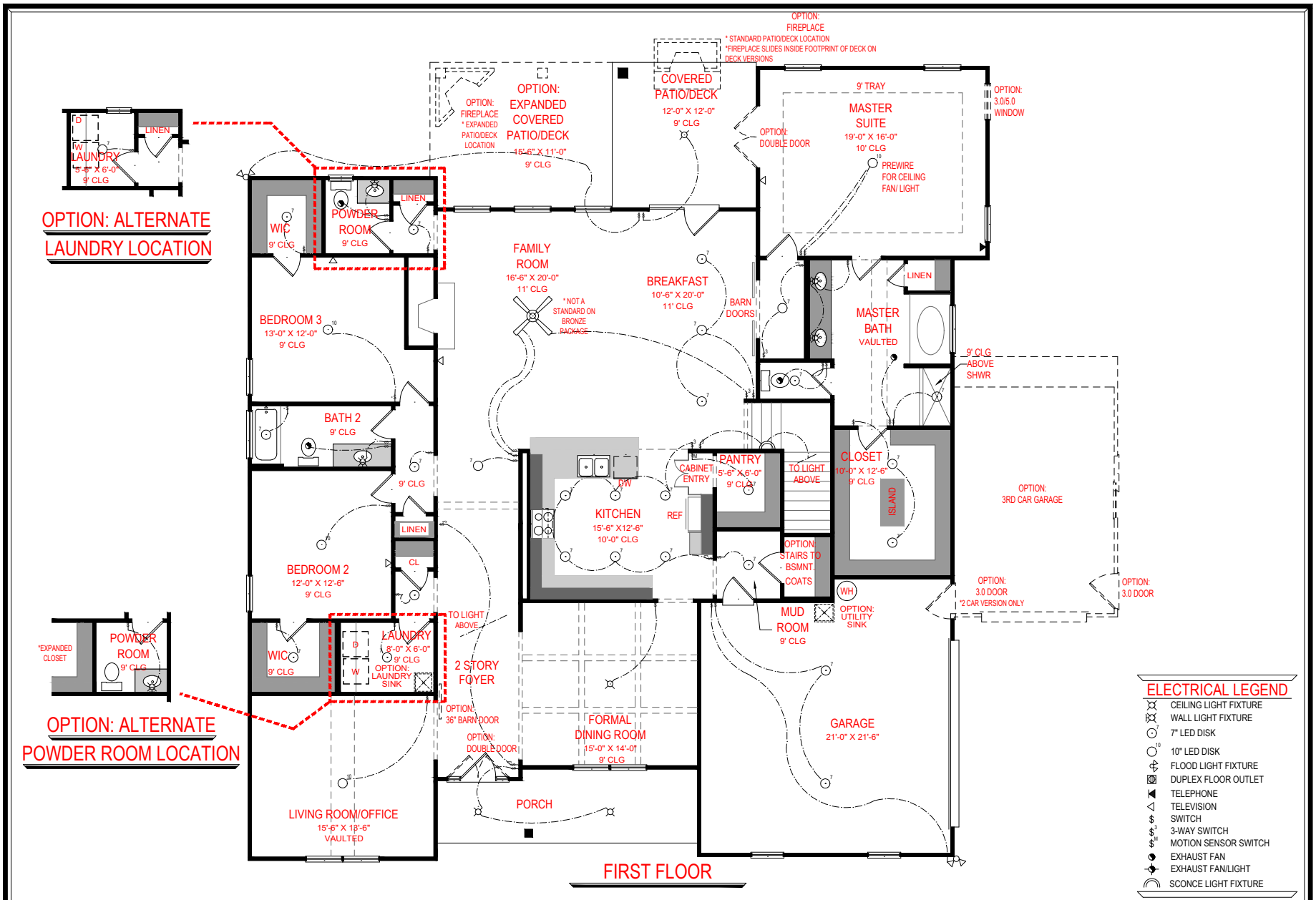
ELECTRICAL LEGEND	
	CEILING LIGHT FIXTURE
	WALL LIGHT FIXTURE
	7" LED DISK
	10" LED DISK
	FLOOD LIGHT FIXTURE
	DUPLEX FLOOR OUTLET
	TELEPHONE
	TELEVISION
	SWITCH
	3-WAY SWITCH
	MOTION SENSOR SWITCH
	EXHAUST FAN
	EXHAUST FAN/LIGHT
	SCONCE LIGHT FIXTURE

SQUARE FOOTAGE:	
FIRST FLOOR:	3,014 SQ. FT.
SECOND FLOOR:	688 SQ. FT.
TOTAL:	3,702 SQ. FT.

WOODBURY
SIDE ENTRY VERSION



*THE DRAWING(S) ON THIS PAGE ARE A GRAPHICAL REPRESENTATION ONLY. PLEASE CONSULT YOUR AGENT FOR SPECIFIC INFORMATION REGARDING THIS FLOOR PLAN. THE DESIGN OF THE FLOOR PLAN REPRESENTED IS SUBJECT TO CHANGE WITHOUT NOTICE.



FIRST FLOOR

ELECTRICAL LEGEND

- CEILING LIGHT FIXTURE
- WALL LIGHT FIXTURE
- 7" LED DISK
- 10" LED DISK
- FLOOD LIGHT FIXTURE
- DUPLEX FLOOR OUTLET
- TELEPHONE
- TELEVISION
- SWITCH
- 3-WAY SWITCH
- MOTION SENSOR SWITCH
- EXHAUST FAN
- EXHAUST FAN/LIGHT
- SCONCE LIGHT FIXTURE

SQUARE FOOTAGE:

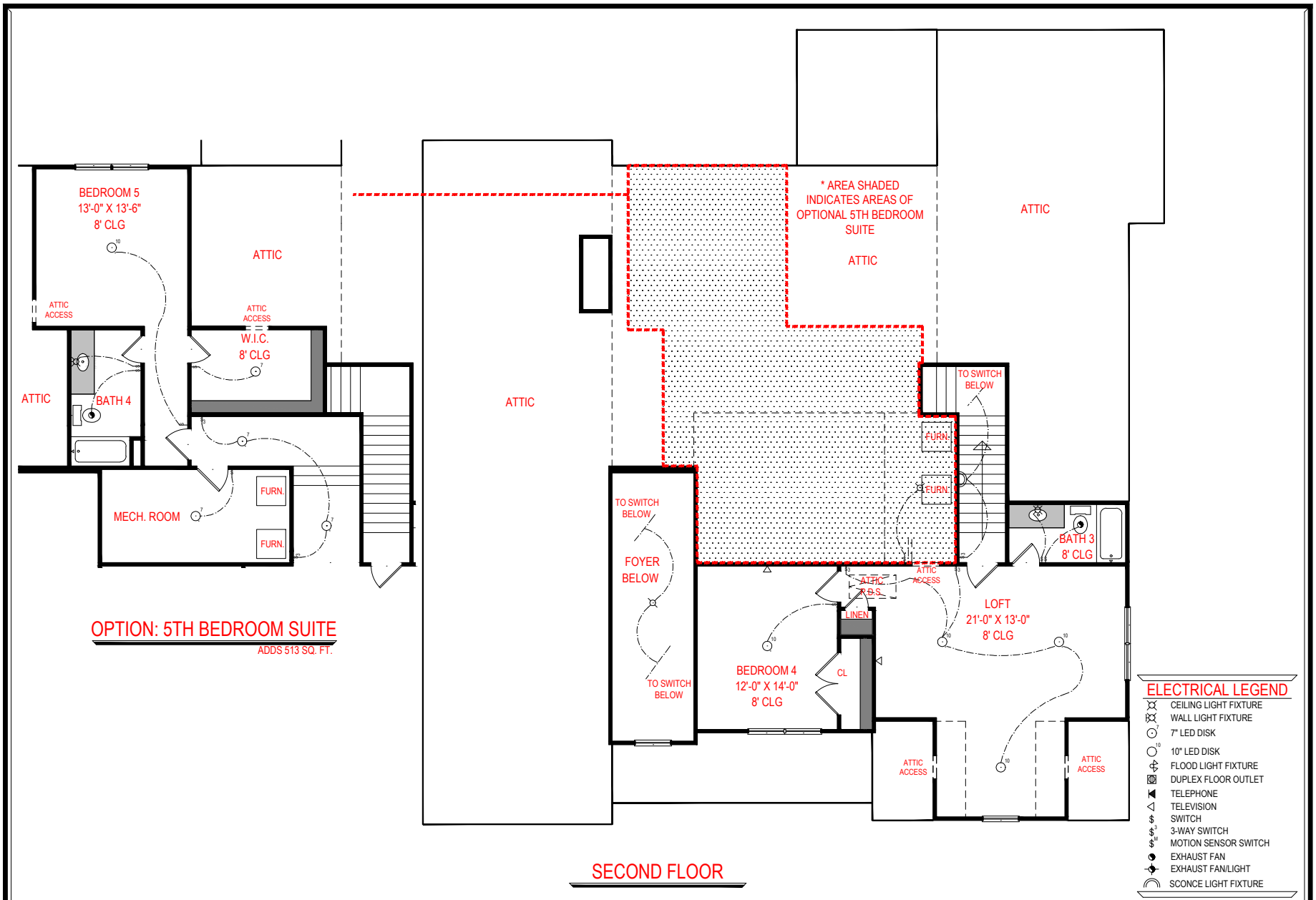
FIRST FLOOR:	3,014 SQ. FT.
SECOND FLOOR:	688 SQ. FT.
TOTAL:	3,702 SQ. FT.

WOODBURY

SIDE ENTRY VERSION



*THE DRAWING(S) ON THIS PAGE ARE A GRAPHICAL REPRESENTATION ONLY. PLEASE CONSULT YOUR AGENT FOR SPECIFIC INFORMATION REGARDING THIS FLOOR PLAN. THE DESIGN OF THE FLOOR PLAN REPRESENTED IS SUBJECT TO CHANGE WITHOUT NOTICE.



OPTION: 5TH BEDROOM SUITE
 ADDS 513 SQ. FT.

SECOND FLOOR

ELECTRICAL LEGEND

- CEILING LIGHT FIXTURE
- WALL LIGHT FIXTURE
- 7" LED DISK
- 10" LED DISK
- FLOOD LIGHT FIXTURE
- DUPLEX FLOOR OUTLET
- TELEPHONE
- TELEVISION
- SWITCH
- 3-WAY SWITCH
- MOTION SENSOR SWITCH
- EXHAUST FAN
- EXHAUST FAN/LIGHT
- SCONCE LIGHT FIXTURE

WOODBURY
 SIDE ENTRY VERSION



SQUARE FOOTAGE:

FIRST FLOOR:	3,014 SQ. FT.
SECOND FLOOR:	688 SQ. FT.
TOTAL:	3,702 SQ. FT.

*THE DRAWING(S) ON THIS PAGE ARE A GRAPHICAL REPRESENTATION ONLY. PLEASE CONSULT YOUR AGENT FOR SPECIFIC INFORMATION REGARDING THIS FLOOR PLAN. THE DESIGN OF THE FLOOR PLAN REPRESENTED IS SUBJECT TO CHANGE WITHOUT NOTICE.