

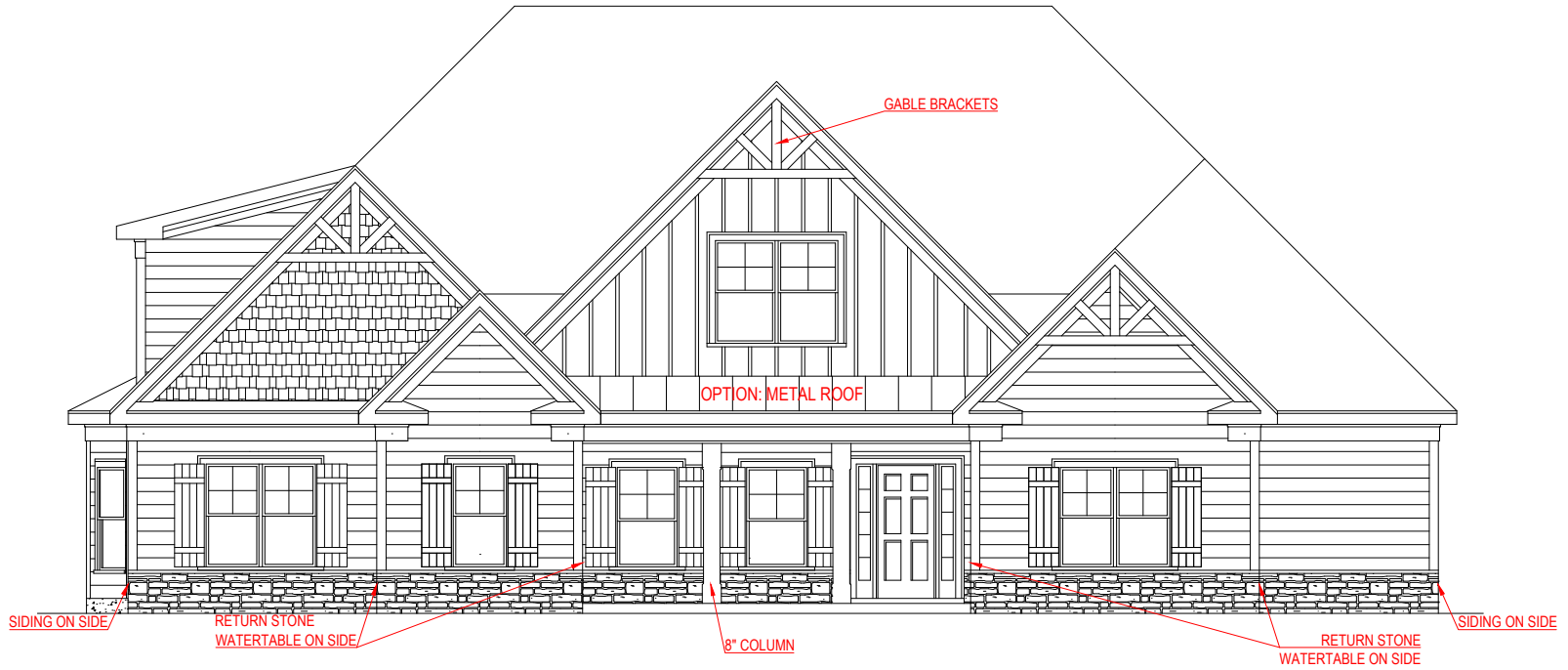
FRONT ELEVATION - A VERSION

GREYWELL

JEFF LINDSEY COMMUNITIES
Live your dream.

THE DRAWING(S) ON THIS PAGE ARE A GRAPHICAL REPRESENTATION ONLY. PLEASE CONSULT YOUR AGENT FOR SPECIFIC INFORMATION REGARDING THIS FLOOR PLAN. THE DESIGN OF THE FLOOR PLAN REPRESENTED IS SUBJECT TO CHANGE WITHOUT NOTICE.

SQUARE FOOTAGE:	
FIRST FLOOR:	2,533 SQ. FT.
SECOND FLOOR:	1,129 SQ. FT.
TOTAL:	3,662 SQ. FT.



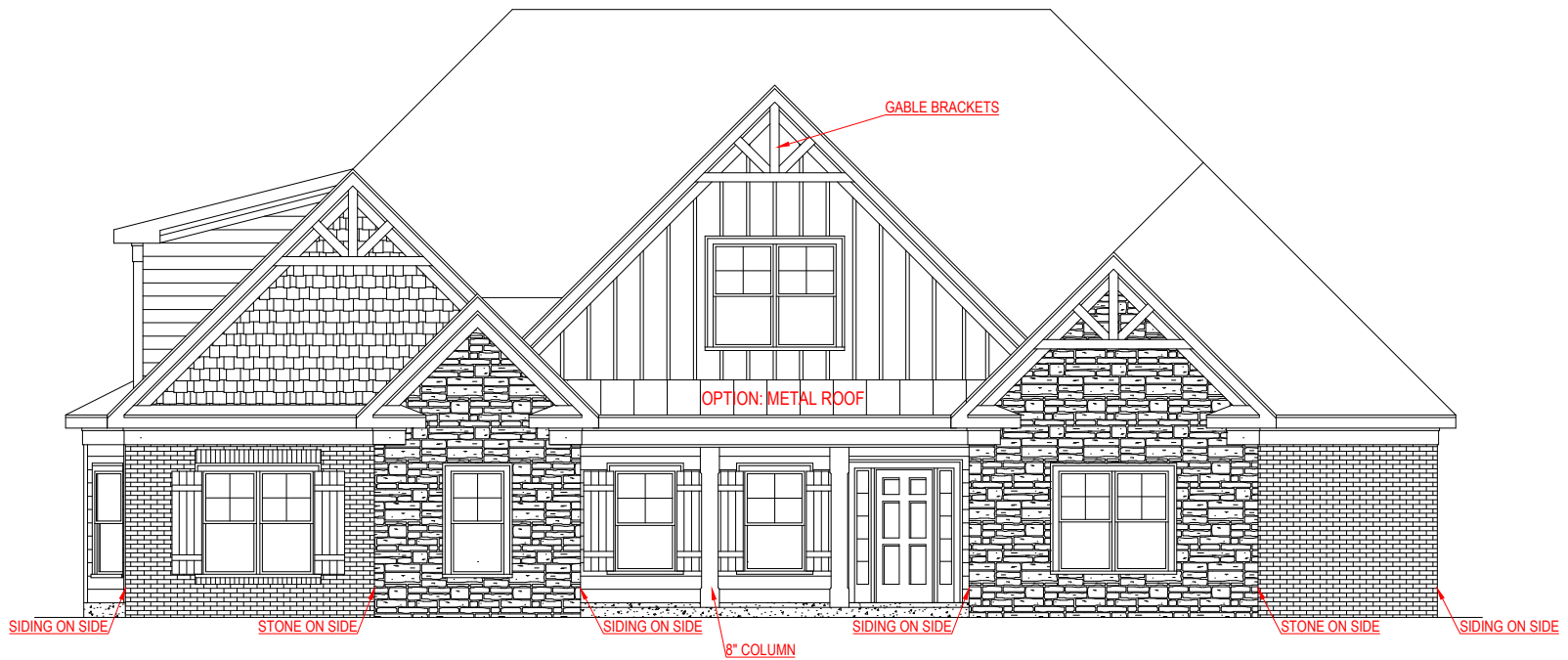
FRONT ELEVATION - B VERSION

GREYWELL



THE DRAWING(S) ON THIS PAGE ARE A GRAPHICAL REPRESENTATION ONLY. PLEASE CONSULT YOUR AGENT FOR SPECIFIC INFORMATION REGARDING THIS FLOOR PLAN. THE DESIGN OF THE FLOOR PLAN REPRESENTED IS SUBJECT TO CHANGE WITHOUT NOTICE.

SQUARE FOOTAGE:	
FIRST FLOOR:	2,533 SQ. FT.
SECOND FLOOR:	1,129 SQ. FT.
TOTAL:	3,662 SQ. FT.



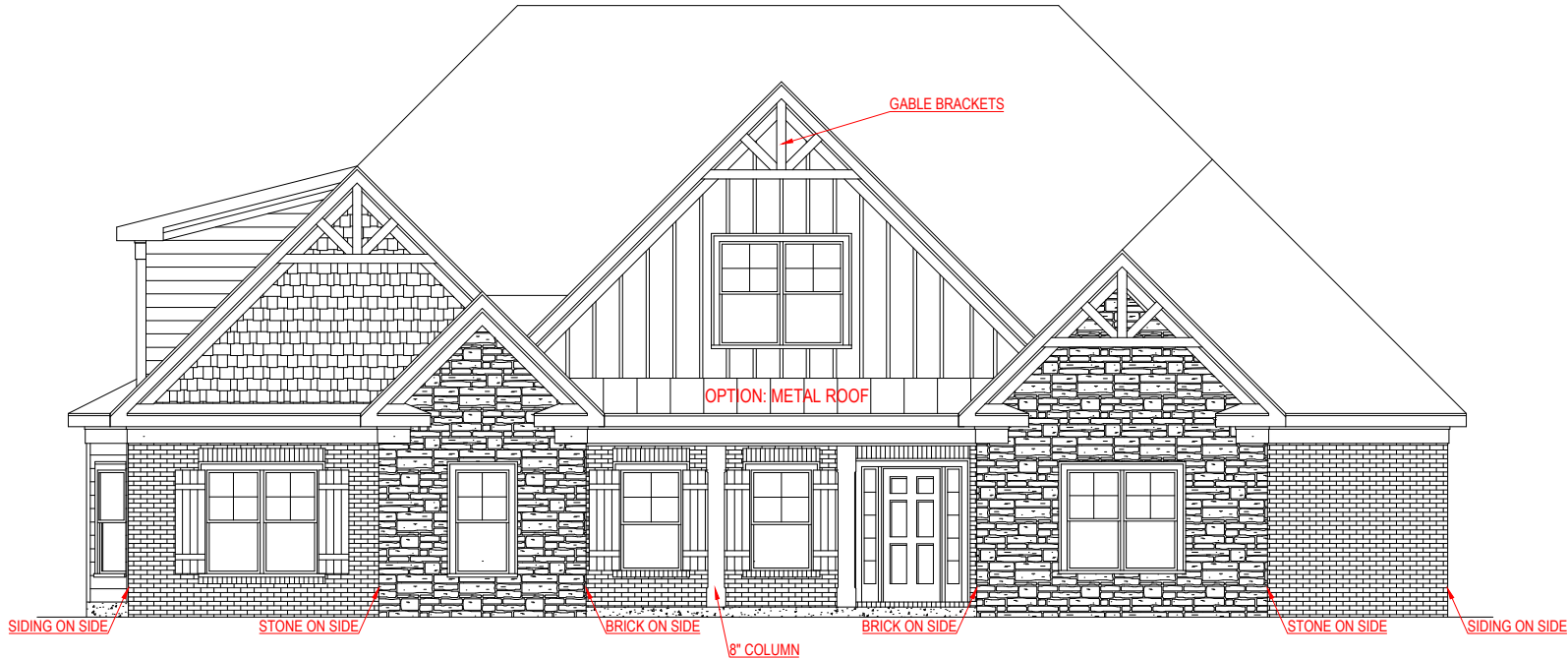
FRONT ELEVATION - C VERSION

GREYWELL

JEFF LINDSEY COMMUNITIES
Live your dream.

THE DRAWING(S) ON THIS PAGE ARE A GRAPHICAL REPRESENTATION ONLY. PLEASE CONSULT YOUR AGENT FOR SPECIFIC INFORMATION REGARDING THIS FLOOR PLAN. THE DESIGN OF THE FLOOR PLAN REPRESENTED IS SUBJECT TO CHANGE WITHOUT NOTICE.

SQUARE FOOTAGE:	
FIRST FLOOR:	2,533 SQ. FT.
SECOND FLOOR:	1,129 SQ. FT.
TOTAL:	3,662 SQ. FT.



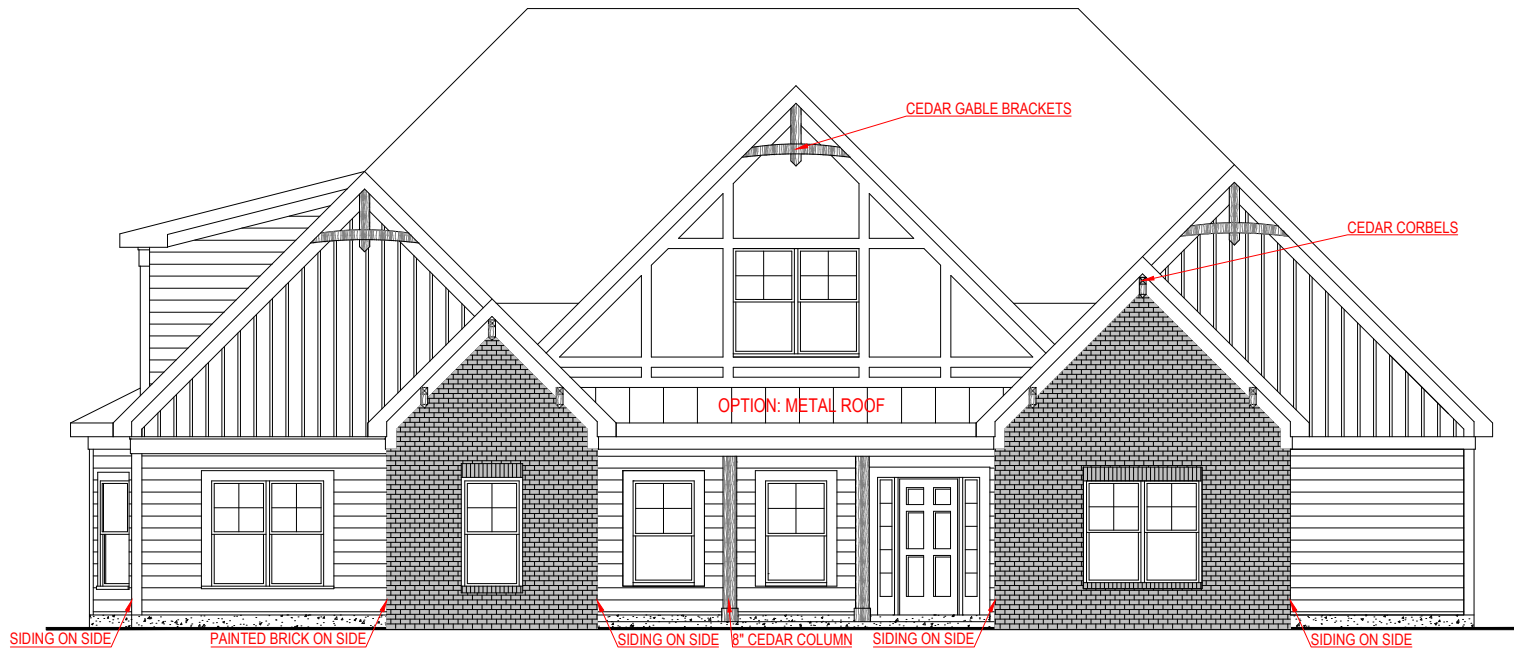
FRONT ELEVATION - D VERSION

GREYWELL



THE DRAWING(S) ON THIS PAGE ARE A GRAPHICAL REPRESENTATION ONLY. PLEASE CONSULT YOUR AGENT FOR SPECIFIC INFORMATION REGARDING THIS FLOOR PLAN. THE DESIGN OF THE FLOOR PLAN REPRESENTED IS SUBJECT TO CHANGE WITHOUT NOTICE.

SQUARE FOOTAGE:	
FIRST FLOOR:	2,533 SQ. FT.
SECOND FLOOR:	1,129 SQ. FT.
TOTAL:	3,662 SQ. FT.



FRONT ELEVATION - F VERSION

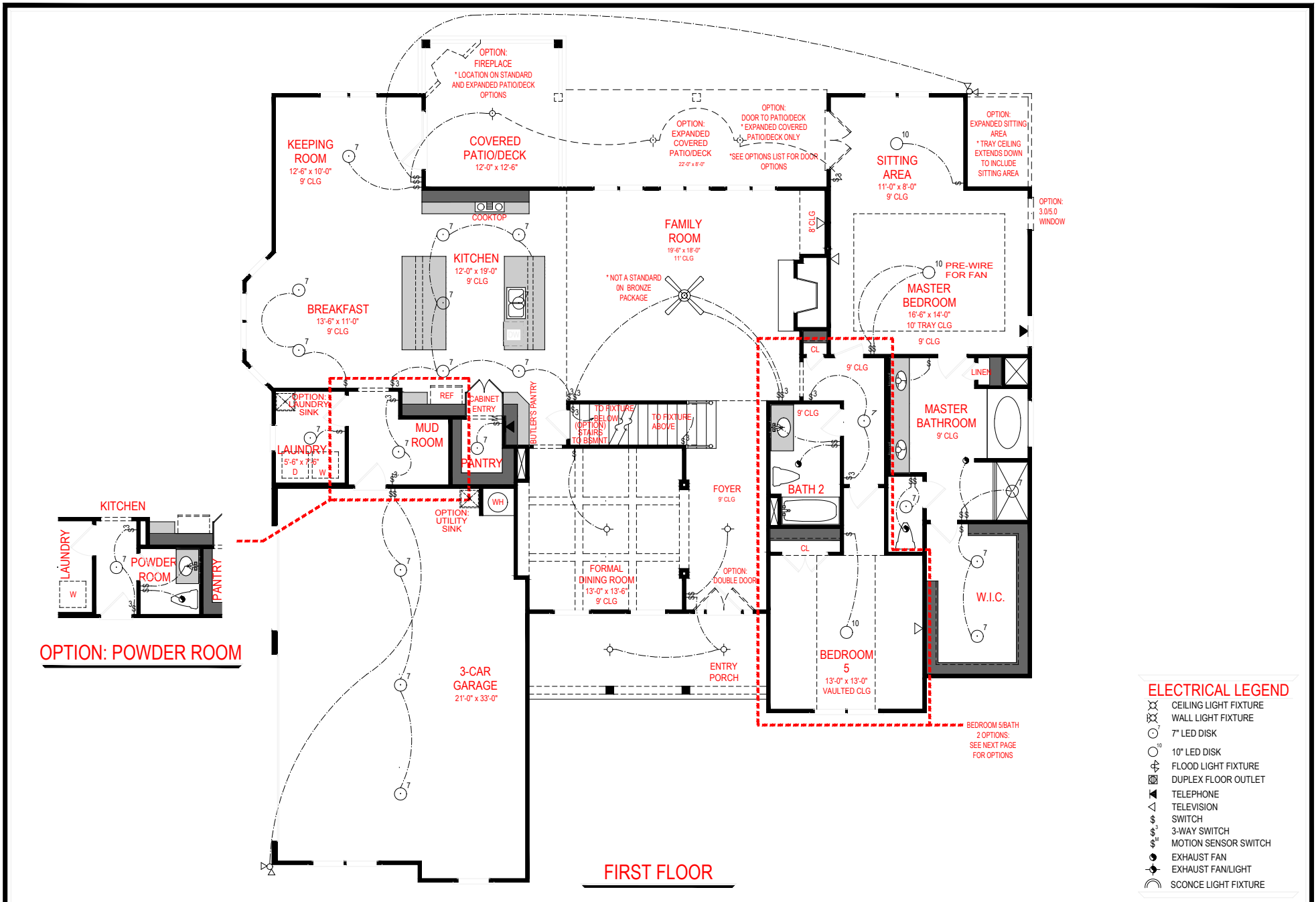
GREYWELL

JEFF LINDSEY COMMUNITIES
Live your dream.

THE DRAWING(S) ON THIS PAGE ARE A GRAPHICAL REPRESENTATION ONLY. PLEASE CONSULT YOUR AGENT FOR SPECIFIC INFORMATION REGARDING THIS FLOOR PLAN. THE DESIGN OF THE FLOOR PLAN REPRESENTED IS SUBJECT TO CHANGE WITHOUT NOTICE.

SQUARE FOOTAGE:

FIRST FLOOR:	2,533 SQ. FT.
SECOND FLOOR:	1,129 SQ. FT.
TOTAL:	3,662 SQ. FT.



FIRST FLOOR

- ELECTRICAL LEGEND**
- ⊗ CEILING LIGHT FIXTURE
 - ⊗ WALL LIGHT FIXTURE
 - 7" LED DISK
 - 10" LED DISK
 - ⊕ FLOOD LIGHT FIXTURE
 - ⊕ DUPLEX FLOOR OUTLET
 - ☎ TELEPHONE
 - ▲ TELEVISION
 - ⊞ SWITCH
 - ⊞ 3-WAY SWITCH
 - ⊞ MOTION SENSOR SWITCH
 - ⊞ EXHAUST FAN
 - ⊞ EXHAUST FAN/LIGHT
 - ⊞ SCONCE LIGHT FIXTURE

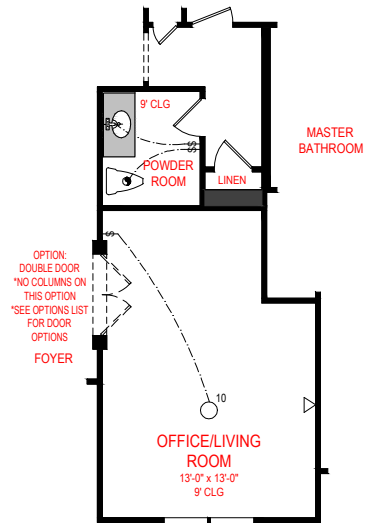
SQUARE FOOTAGE:

FIRST FLOOR:	2,533 SQ. FT.
SECOND FLOOR:	1,129 SQ. FT.
TOTAL:	3,662 SQ. FT.

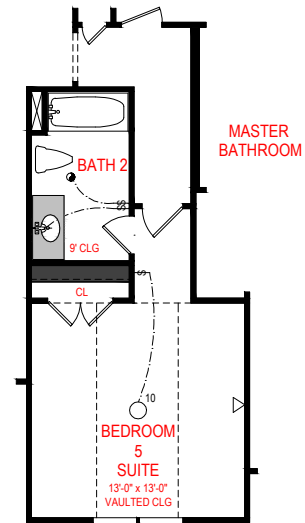
GREYWELL

JEFF LINDSEY COMMUNITIES
Live your dream.

*THE DRAWING(S) ON THIS PAGE ARE A GRAPHICAL REPRESENTATION ONLY. PLEASE CONSULT YOUR AGENT FOR SPECIFIC INFORMATION REGARDING THIS FLOOR PLAN. THE DESIGN OF THE FLOOR PLAN REPRESENTED IS SUBJECT TO CHANGE WITHOUT NOTICE.




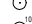




OPTION: OFFICE/LIVING ROOM



OPTION: BEDROOM 5 SUITE

*THIS OPTION INCLUDES THE POWDER ROOM OPTION

ELECTRICAL LEGEND

-  CEILING LIGHT FIXTURE
-  WALL LIGHT FIXTURE
-  7" LED DISK
-  10" LED DISK
-  FLOOD LIGHT FIXTURE
-  DUPLEX FLOOR OUTLET
-  TELEPHONE
-  TELEVISION
-  SWITCH
-  3-WAY SWITCH
-  MOTION SENSOR SWITCH
-  EXHAUST FAN
-  EXHAUST FAN/LIGHT
-  SCONCE LIGHT FIXTURE

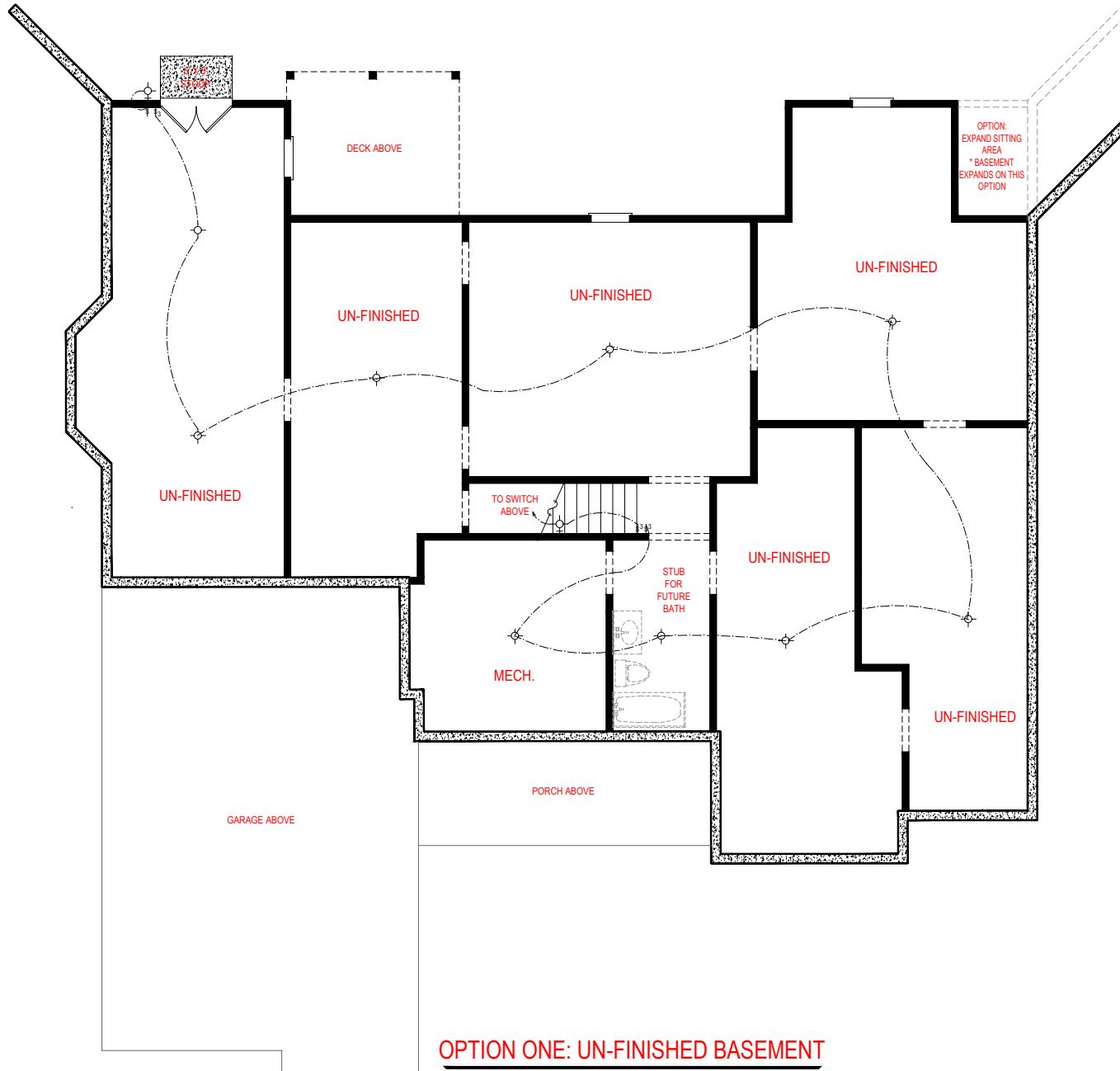
SQUARE FOOTAGE:

FIRST FLOOR:	2,533 SQ. FT.
SECOND FLOOR:	1,129 SQ. FT.
TOTAL:	3,662 SQ. FT.

GREYWELL

JEFF LINDSEY COMMUNITIES
Live your dream.

*THE DRAWING(S) ON THIS PAGE ARE A GRAPHICAL REPRESENTATION ONLY. PLEASE CONSULT YOUR AGENT FOR SPECIFIC INFORMATION REGARDING THIS FLOOR PLAN. THE DESIGN OF THE FLOOR PLAN REPRESENTED IS SUBJECT TO CHANGE WITHOUT NOTICE.



OPTION ONE: UN-FINISHED BASEMENT

ELECTRICAL LEGEND

- ⊗ CEILING LIGHT FIXTURE
- ⊗ WALL LIGHT FIXTURE
- 7" LED DISK
- 10" LED DISK
- ⊕ FLOOD LIGHT FIXTURE
- ⊕ DUPLEX FLOOR OUTLET
- ⊕ TELEPHONE
- ⊕ TELEVISION
- ⊕ SWITCH
- ⊕ 3-WAY SWITCH
- ⊕ MOTION SENSOR SWITCH
- ⊕ EXHAUST FAN
- ⊕ EXHAUST FAN/LIGHT
- ⊕ SCENCE LIGHT FIXTURE

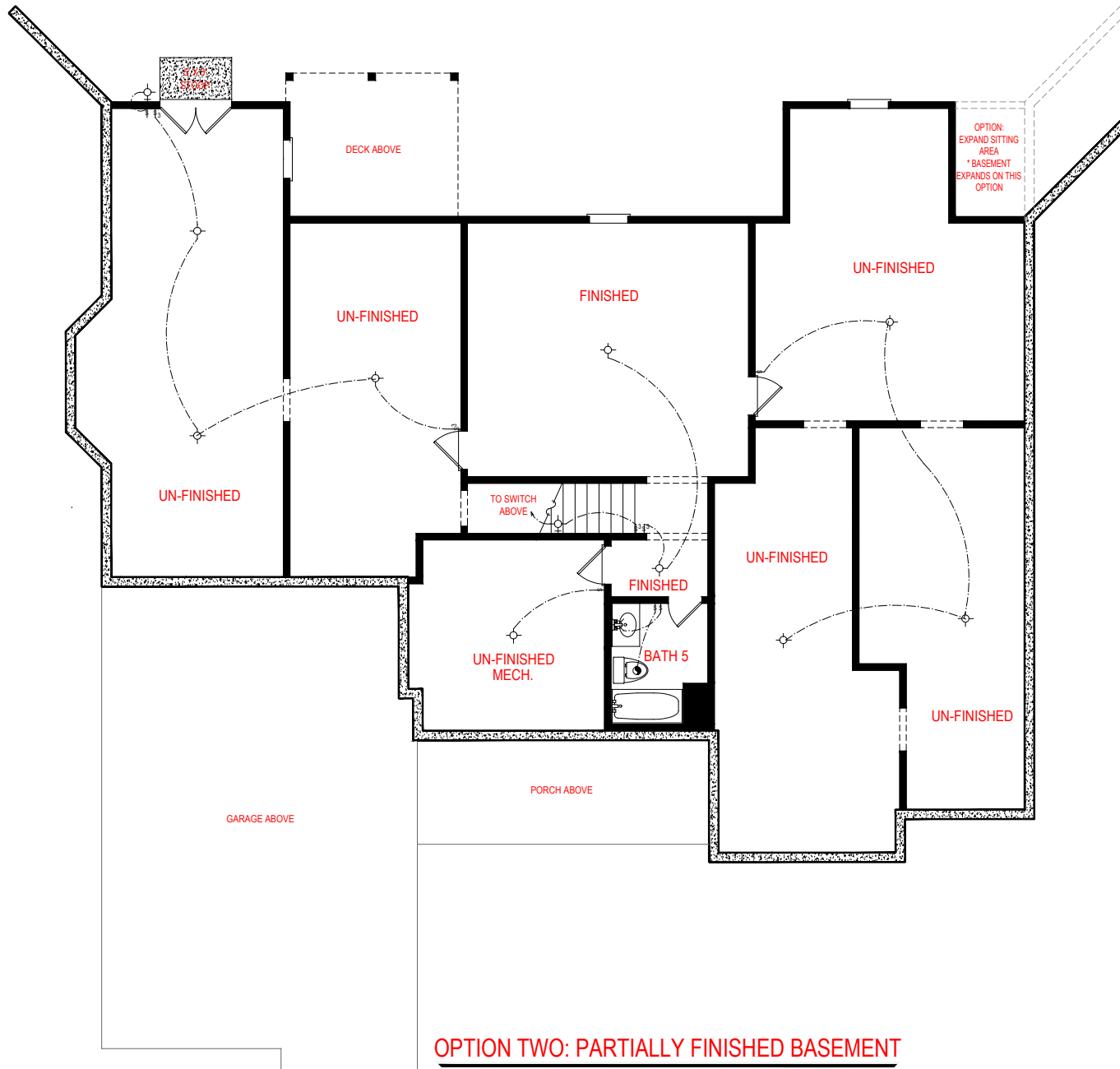
SQUARE FOOTAGE:

FIRST FLOOR:	2,533 SQ. FT.
SECOND FLOOR:	1,129 SQ. FT.
TOTAL:	3,662 SQ. FT.

GREYWELL

JEFF LINDSEY COMMUNITIES
Live your dream.

*THE DRAWING(S) ON THIS PAGE ARE A GRAPHICAL REPRESENTATION ONLY. PLEASE CONSULT YOUR AGENT FOR SPECIFIC INFORMATION REGARDING THIS FLOOR PLAN. THE DESIGN OF THE FLOOR PLAN REPRESENTED IS SUBJECT TO CHANGE WITHOUT NOTICE.



OPTION TWO: PARTIALLY FINISHED BASEMENT

467 SQ. FT. FINISHED

ELECTRICAL LEGEND

- ⊗ CEILING LIGHT FIXTURE
- ⊗ WALL LIGHT FIXTURE
- 7" LED DISK
- 10" LED DISK
- ⊕ FLOOD LIGHT FIXTURE
- ⊞ DUPLEX FLOOR OUTLET
- ⊞ TELEPHONE
- ⊞ TELEVISION
- ⊞ SWITCH
- ⊞ 3-WAY SWITCH
- ⊞ MOTION SENSOR SWITCH
- ⊞ EXHAUST FAN
- ⊞ EXHAUST FAN/LIGHT
- ⊞ SCONCE LIGHT FIXTURE

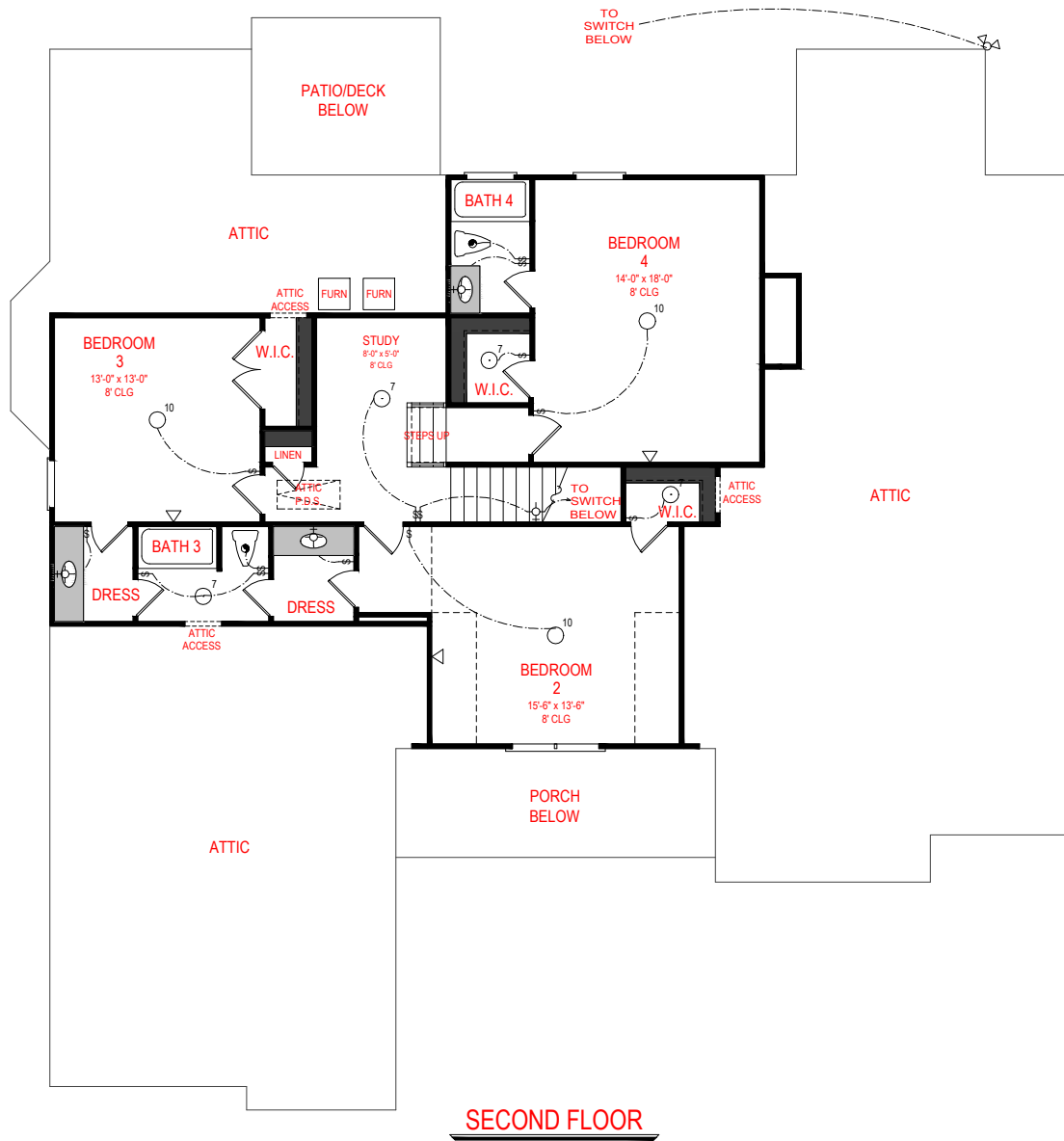
SQUARE FOOTAGE:

FIRST FLOOR:	2,533 SQ. FT.
SECOND FLOOR:	1,129 SQ. FT.
TOTAL:	3,662 SQ. FT.

GREYWELL



*THE DRAWING(S) ON THIS PAGE ARE A GRAPHICAL REPRESENTATION ONLY. PLEASE CONSULT YOUR AGENT FOR SPECIFIC INFORMATION REGARDING THIS FLOOR PLAN. THE DESIGN OF THE FLOOR PLAN REPRESENTED IS SUBJECT TO CHANGE WITHOUT NOTICE.



SECOND FLOOR

ELECTRICAL LEGEND

	CEILING LIGHT FIXTURE
	WALL LIGHT FIXTURE
	7" LED DISK
	10" LED DISK
	FLOOD LIGHT FIXTURE
	DUPLEX FLOOR OUTLET
	TELEPHONE
	TELEVISION
	SWITCH
	3-WAY SWITCH
	MOTION SENSOR SWITCH
	EXHAUST FAN
	EXHAUST FAN/LIGHT
	SCONCE LIGHT FIXTURE

SQUARE FOOTAGE:

FIRST FLOOR:	2,533 SQ. FT.
SECOND FLOOR:	1,129 SQ. FT.
TOTAL:	3,662 SQ. FT.

GREYWELL

JEFF LINDSEY COMMUNITIES
Live your dream.

*THE DRAWING(S) ON THIS PAGE ARE A GRAPHICAL REPRESENTATION ONLY. PLEASE CONSULT YOUR AGENT FOR SPECIFIC INFORMATION REGARDING THIS FLOOR PLAN. THE DESIGN OF THE FLOOR PLAN REPRESENTED IS SUBJECT TO CHANGE WITHOUT NOTICE.