

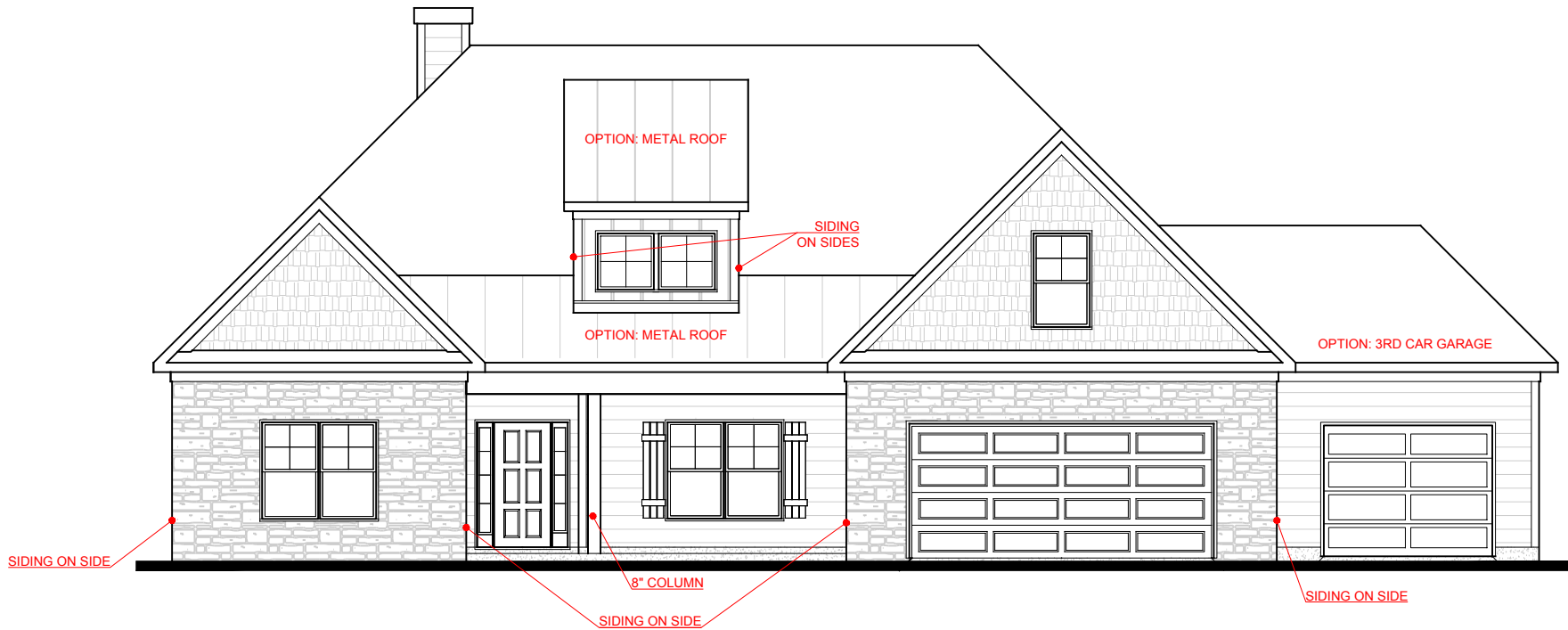
**FRONT ELEVATION- A VERSION**

**HARRIS**  
SLAB FRONT ENTRY VERSION



SQUARE FOOTAGE:	
FIRST FLOOR:	2,814
SECOND FLOOR:	N/A
<b>TOTAL:</b>	<b>2,814</b>

\*THE DRAWING(S) ON THIS PAGE ARE A GRAPHICAL REPRESENTATION ONLY. PLEASE CONSULT YOUR AGENT FOR SPECIFIC INFORMATION REGARDING THIS FLOOR PLAN. THE DESIGN OF THE FLOOR PLAN REPRESENTED IS SUBJECT TO CHANGE WITHOUT NOTICE.



**FRONT ELEVATION- B VERSION**

**HARRIS**  
SLAB FRONT ENTRY VERSION



SQUARE FOOTAGE:	
FIRST FLOOR:	2,814
SECOND FLOOR:	N/A
<b>TOTAL:</b>	<b>2,814</b>

\*THE DRAWING(S) ON THIS PAGE ARE A GRAPHICAL REPRESENTATION ONLY. PLEASE CONSULT YOUR AGENT FOR SPECIFIC INFORMATION REGARDING THIS FLOOR PLAN. THE DESIGN OF THE FLOOR PLAN REPRESENTED IS SUBJECT TO CHANGE WITHOUT NOTICE.



REAR ELEVATION- STANDARD PATIO



REAR ELEVATION- EXPANDED PATIO OPTION

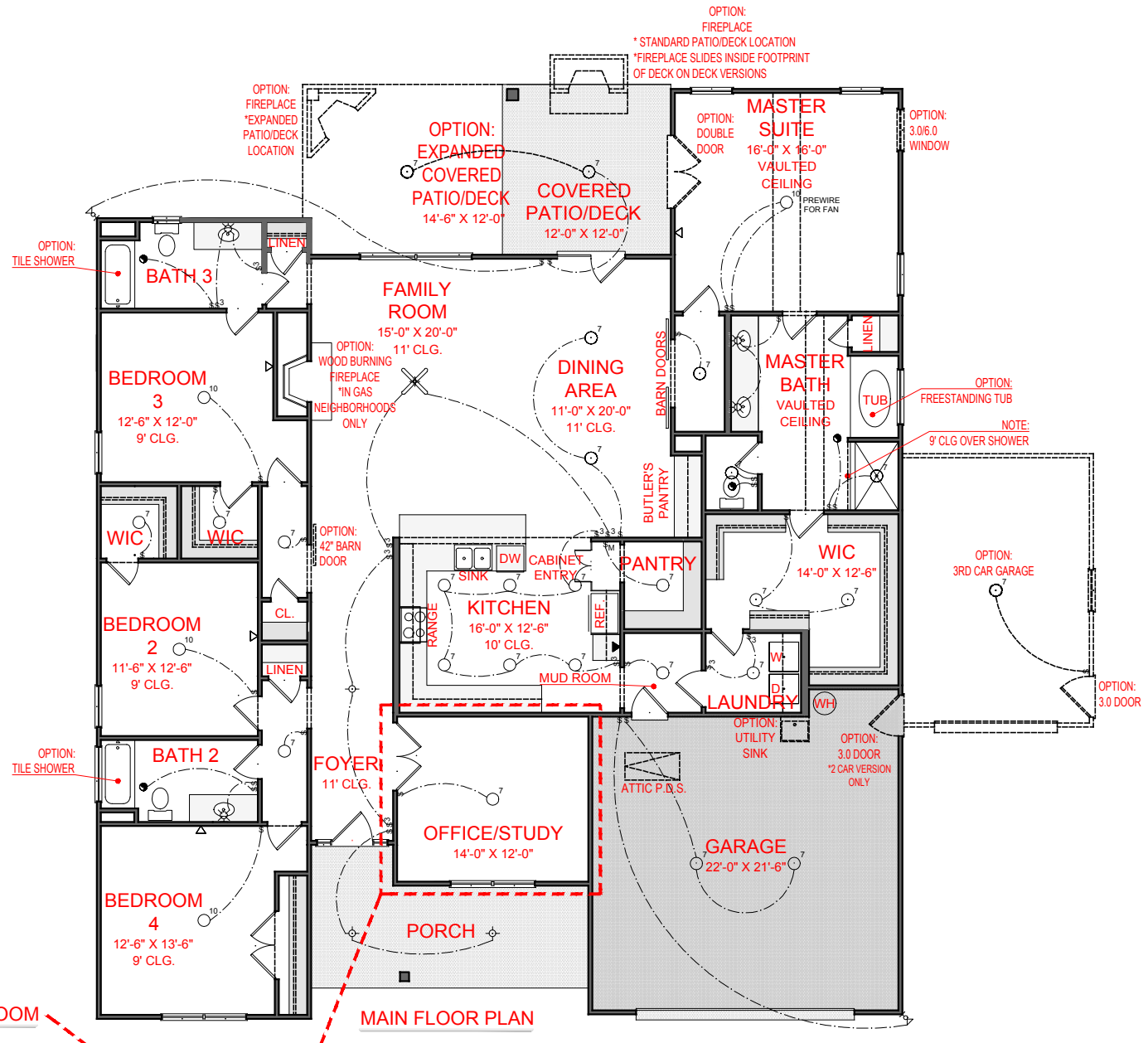
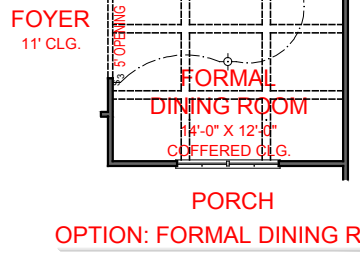
**HARRIS**  
REAR ELEVATIONS



SQUARE FOOTAGE:	
FIRST FLOOR:	N/A
SECOND FLOOR:	N/A
TOTAL:	N/A

\*THE DRAWING(S) ON THIS PAGE ARE A GRAPHICAL REPRESENTATION ONLY. PLEASE CONSULT YOUR AGENT FOR SPECIFIC INFORMATION REGARDING THIS FLOOR PLAN. THE DESIGN OF THE FLOOR PLAN REPRESENTED IS SUBJECT TO CHANGE WITHOUT NOTICE.

- ELECTRICAL LEGEND**
-  CEILING LIGHT FIXTURE
  -  WALL LIGHT FIXTURE
  -  7" LED DISK
  -  10" LED DISK
  -  CEILING FAN
  -  FLOOD LIGHT FIXTURE
  -  DUPLEX FLOOR OUTLET
  -  TELEPHONE
  -  NETWORK/CABLE
  -  SWITCH
  -  3-WAY SWITCH
  -  4-WAY SWITCH
  -  MOTION SENSOR SWITCH
  -  EXHAUST FAN
  -  EXHAUST FAN/LIGHT
  -  SCONCE LIGHT FIXTURE



# HARRIS

SLAB FRONT ENTRY VERSION



SQUARE FOOTAGE:	
FIRST FLOOR:	2,814
SECOND FLOOR:	N/A
TOTAL:	2,814

\*THE DRAWING(S) ON THIS PAGE ARE A GRAPHICAL REPRESENTATION ONLY. PLEASE CONSULT YOUR AGENT FOR SPECIFIC INFORMATION REGARDING THIS FLOOR PLAN. THE DESIGN OF THE FLOOR PLAN REPRESENTED IS SUBJECT TO CHANGE WITHOUT NOTICE.