

FRONT ELEVATION - A VERSION

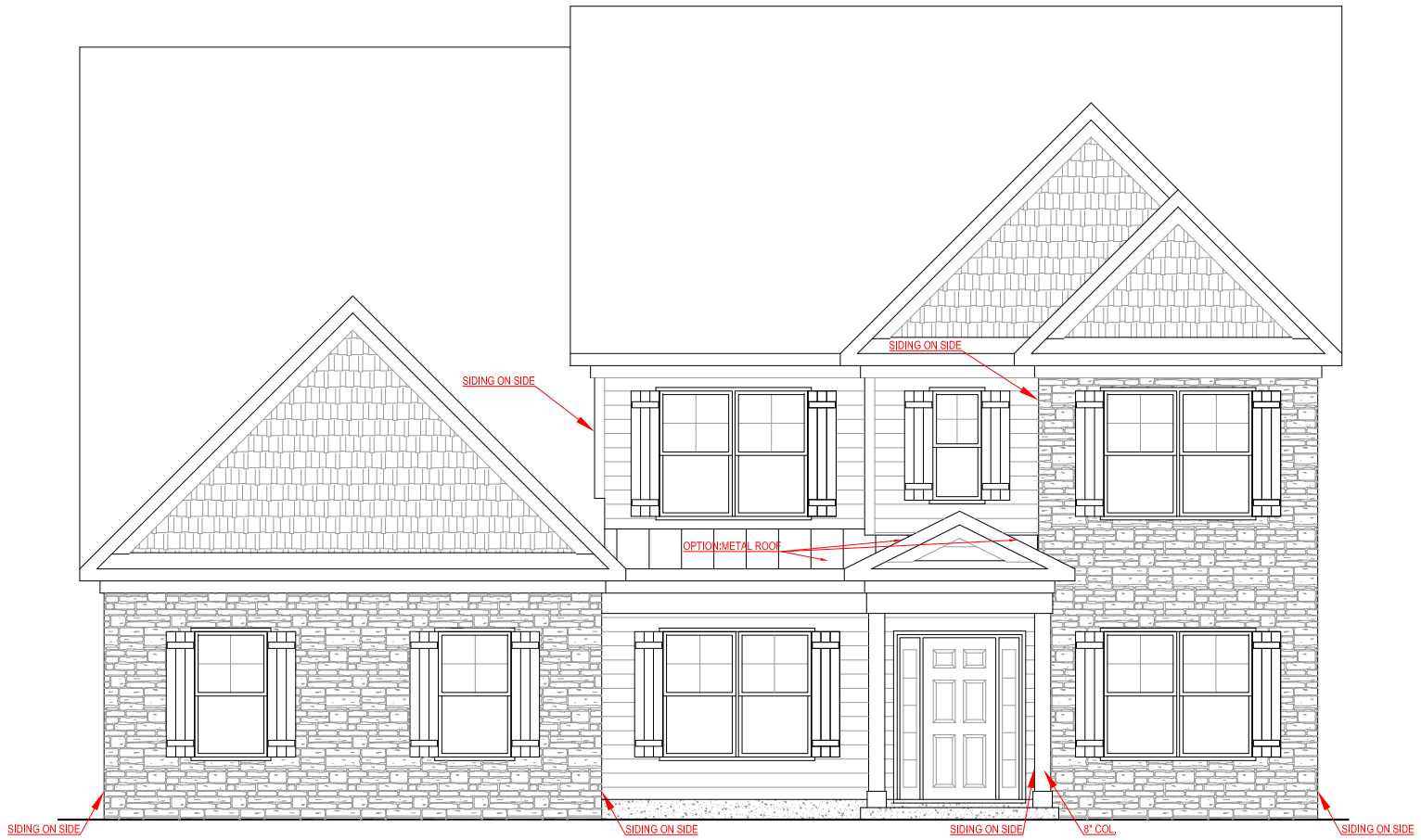
STANTON
SIDE ENTRY VERSION

JEFF LINDSEY COMMUNITIES
Live your dream.

*THE DRAWING(S) ON THIS PAGE ARE A GRAPHICAL REPRESENTATION ONLY. PLEASE CONSULT YOUR AGENT FOR SPECIFIC INFORMATION REGARDING THIS FLOOR PLAN. THE DESIGN OF THE FLOOR PLAN REPRESENTED IS SUBJECT TO CHANGE WITHOUT NOTICE.

SQUARE FOOTAGE:

FIRST FLOOR:	1,708 SQ. FT.
SECOND FLOOR:	931 SQ. FT.
TOTAL:	2,639 SQ. FT.



FRONT ELEVATION - B VERSION

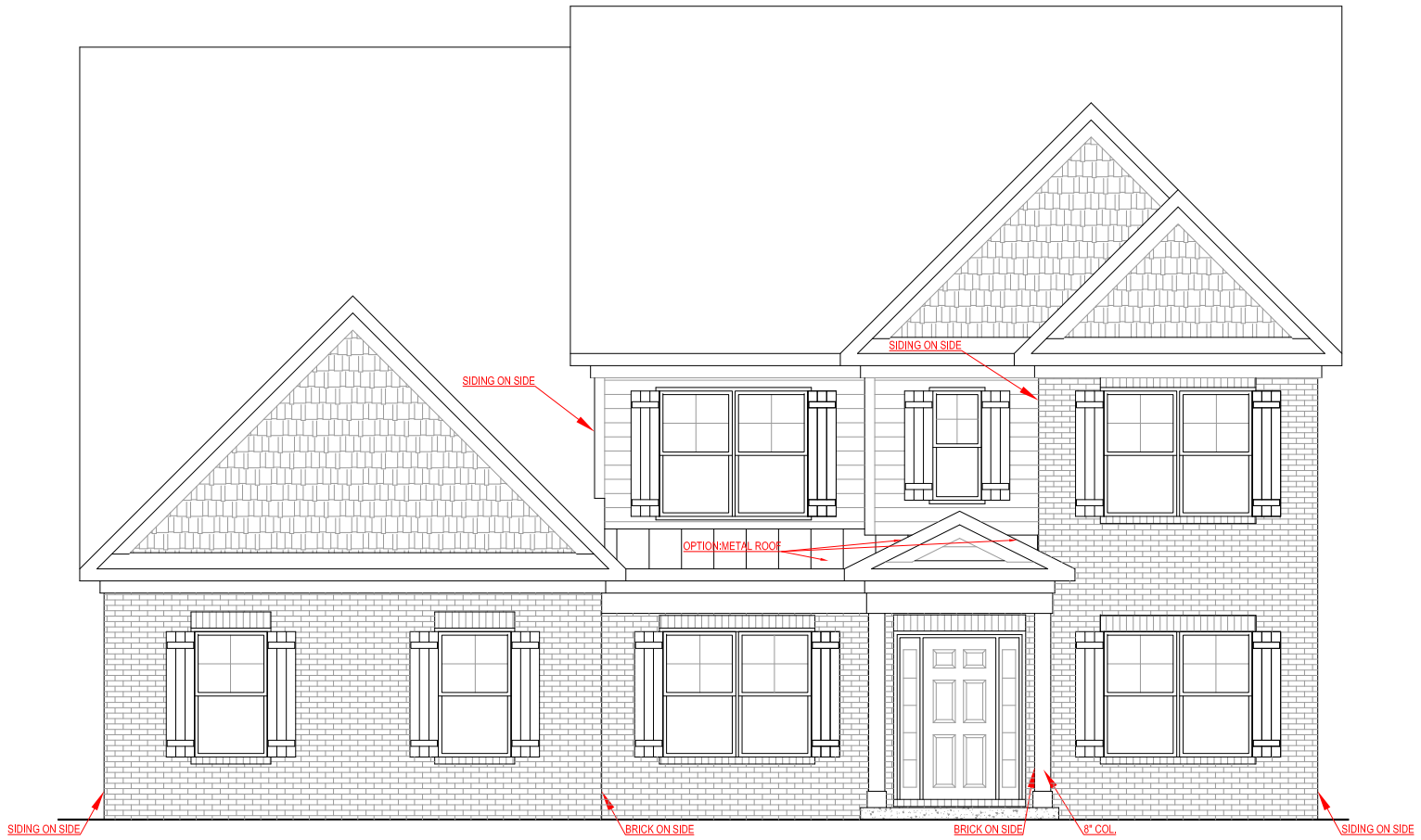
STANTON
SIDE ENTRY VERSION



*THE DRAWING(S) ON THIS PAGE ARE A GRAPHICAL REPRESENTATION ONLY. PLEASE CONSULT YOUR AGENT FOR SPECIFIC INFORMATION REGARDING THIS FLOOR PLAN. THE DESIGN OF THE FLOOR PLAN REPRESENTED IS SUBJECT TO CHANGE WITHOUT NOTICE.

SQUARE FOOTAGE:

FIRST FLOOR:	1,708 SQ. FT.
SECOND FLOOR:	931 SQ. FT.
TOTAL:	2,639 SQ. FT.



FRONT ELEVATION - D VERSION

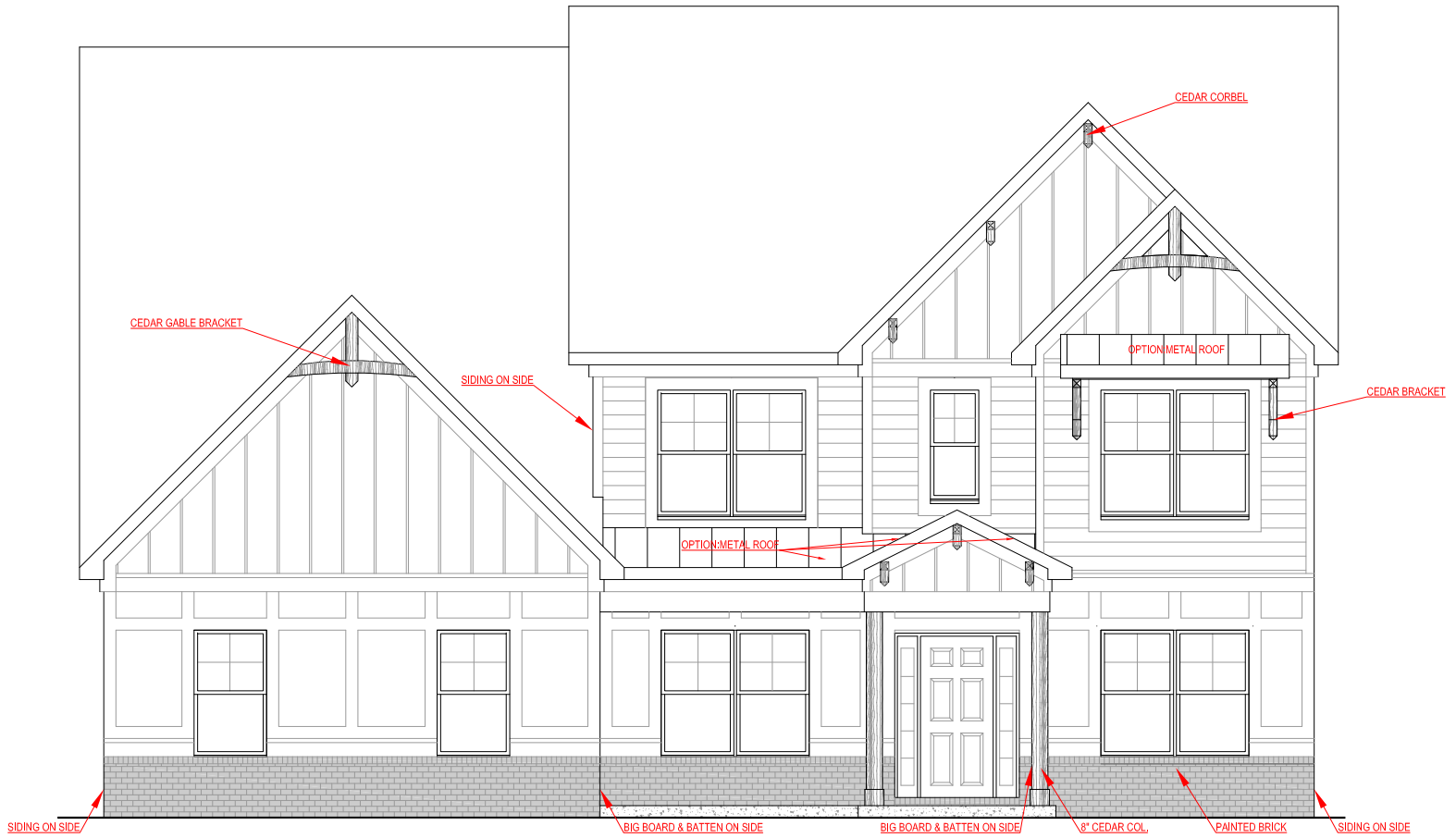
STANTON
SIDE ENTRY VERSION

JEFF LINDSEY COMMUNITIES
Live your dream.

*THE DRAWING(S) ON THIS PAGE ARE A GRAPHICAL REPRESENTATION ONLY. PLEASE CONSULT YOUR AGENT FOR SPECIFIC INFORMATION REGARDING THIS FLOOR PLAN. THE DESIGN OF THE FLOOR PLAN REPRESENTED IS SUBJECT TO CHANGE WITHOUT NOTICE.

SQUARE FOOTAGE:

FIRST FLOOR:	1,708 SQ. FT.
SECOND FLOOR:	931 SQ. FT.
TOTAL:	2,639 SQ. FT.



FRONT ELEVATION - F VERSION

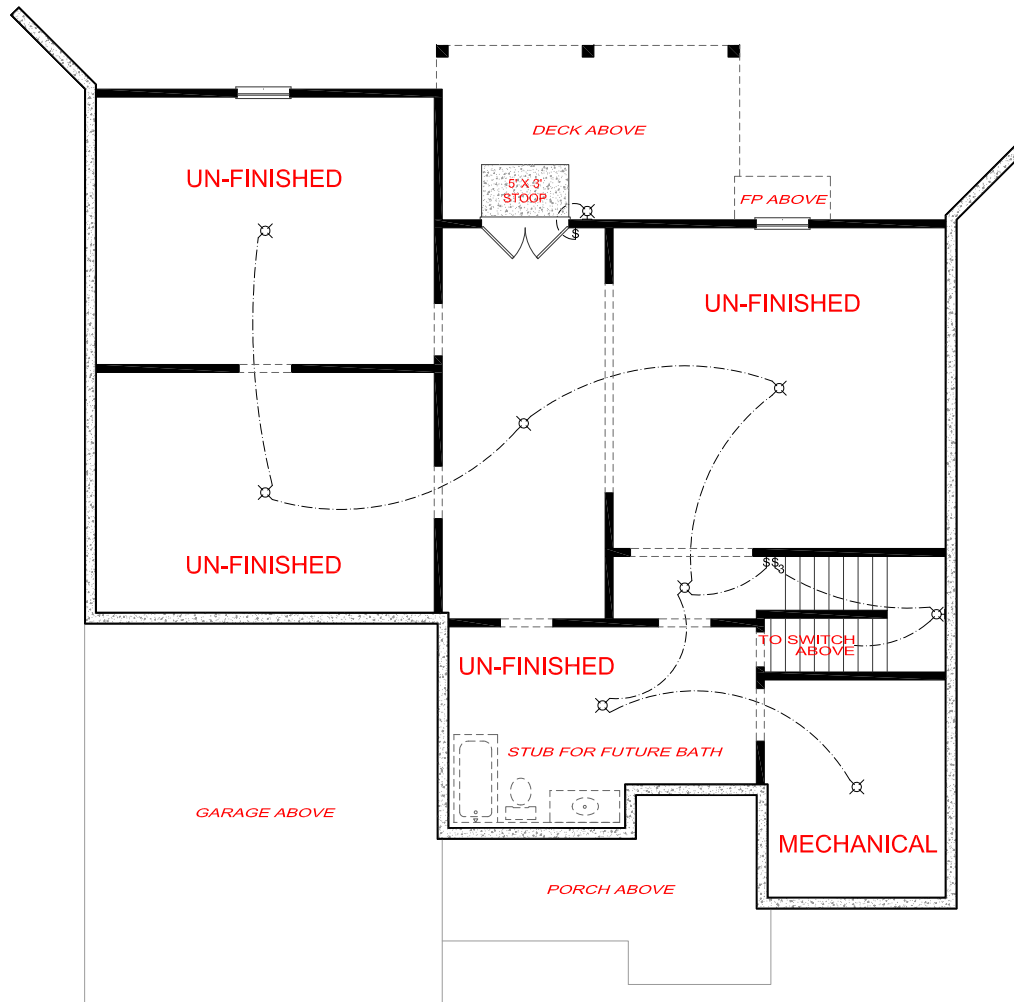
STANTON
SIDE ENTRY VERSION

JEFF LINDSEY COMMUNITIES
Live your dream.

*THE DRAWING(S) ON THIS PAGE ARE A GRAPHICAL REPRESENTATION ONLY. PLEASE CONSULT YOUR AGENT FOR SPECIFIC INFORMATION REGARDING THIS FLOOR PLAN. THE DESIGN OF THE FLOOR PLAN REPRESENTED IS SUBJECT TO CHANGE WITHOUT NOTICE.

SQUARE FOOTAGE:

FIRST FLOOR:	1,708 SQ. FT.
SECOND FLOOR:	931 SQ. FT.
TOTAL:	2,639 SQ. FT.



OPTIONAL BASEMENT

ELECTRICAL LEGEND	
	CEILING LIGHT FIXTURE
	WALL LIGHT FIXTURE
	7" LED DISK
	10" LED DISK
	CEILING FAN
	FLOOD LIGHT FIXTURE
	DUPLEX FLOOR OUTLET
	TELEPHONE
	NETWORK/CABLE
	SWITCH
	3-WAY SWITCH
	4-WAY SWITCH
	MOTION SENSOR SWITCH
	EXHAUST FAN
	EXHAUST FAN/LIGHT
	SCONCE LIGHT FIXTURE

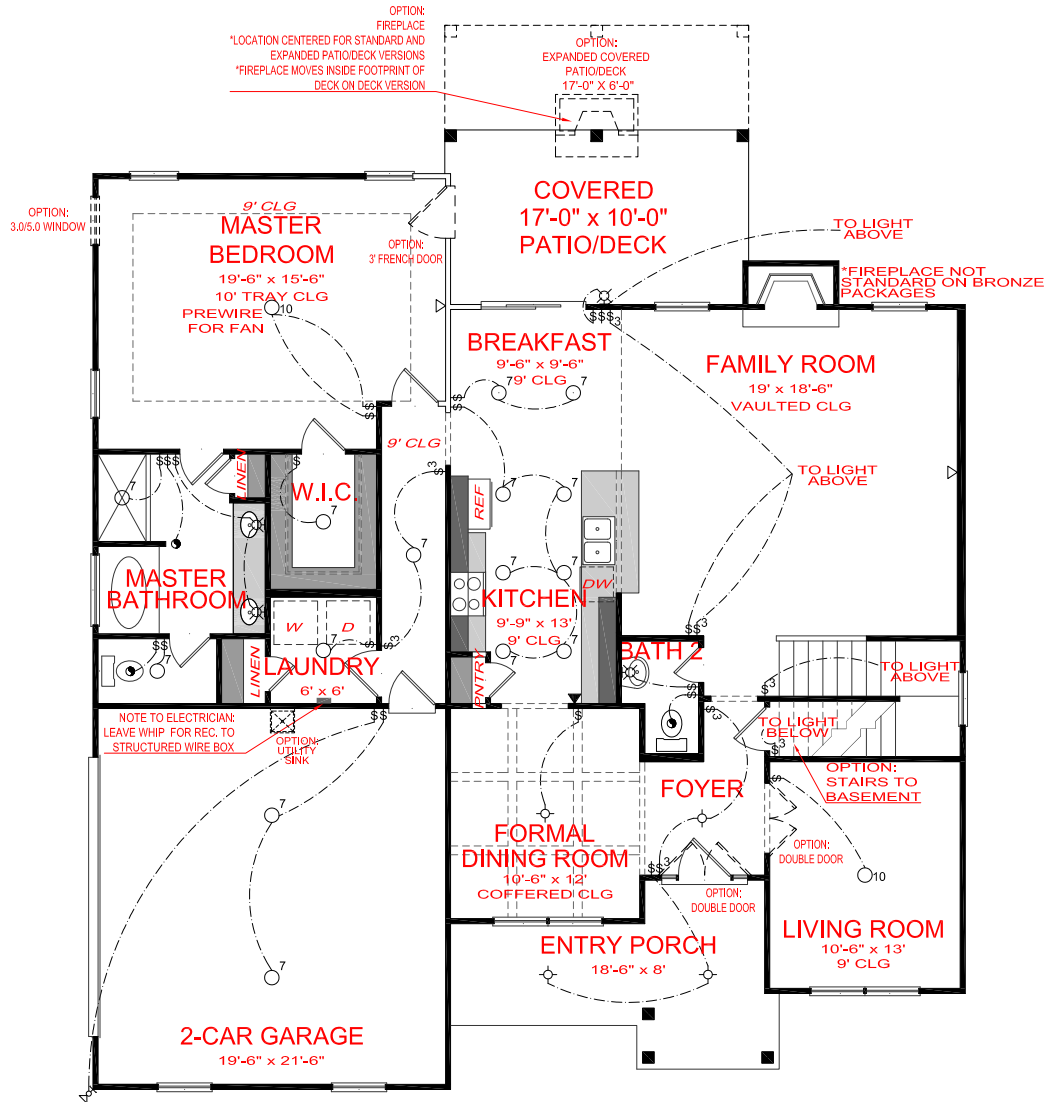
SQUARE FOOTAGE:

FIRST FLOOR:	1,708 SQ. FT.
SECOND FLOOR:	931 SQ. FT.
TOTAL:	2,639 SQ. FT.

STANTON
SIDE ENTRY VERSION


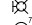
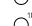


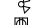

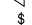
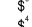
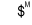
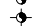





JEFF LINDSEY COMMUNITIES
Live your dream.

*THE DRAWING(S) ON THIS PAGE ARE A GRAPHICAL REPRESENTATION ONLY. PLEASE CONSULT YOUR AGENT FOR SPECIFIC INFORMATION REGARDING THIS FLOOR PLAN. THE DESIGN OF THE FLOOR PLAN REPRESENTED IS SUBJECT TO CHANGE WITHOUT NOTICE.



FIRST FLOOR

ELECTRICAL LEGEND

-  CEILING LIGHT FIXTURE
-  WALL LIGHT FIXTURE
-  7' LED DISK
-  10' LED DISK
-  CEILING FAN
-  FLOOR LIGHT FIXTURE
-  DUPLEX FLOOR OUTLET
-  TELEPHONE
-  NETWORK/CABLE
-  SWITCH
-  3-WAY SWITCH
-  4-WAY SWITCH
-  MOTION SENSOR SWITCH
-  EXHAUST FAN
-  EXHAUST FANLIGHT
-  SCONCE LIGHT FIXTURE

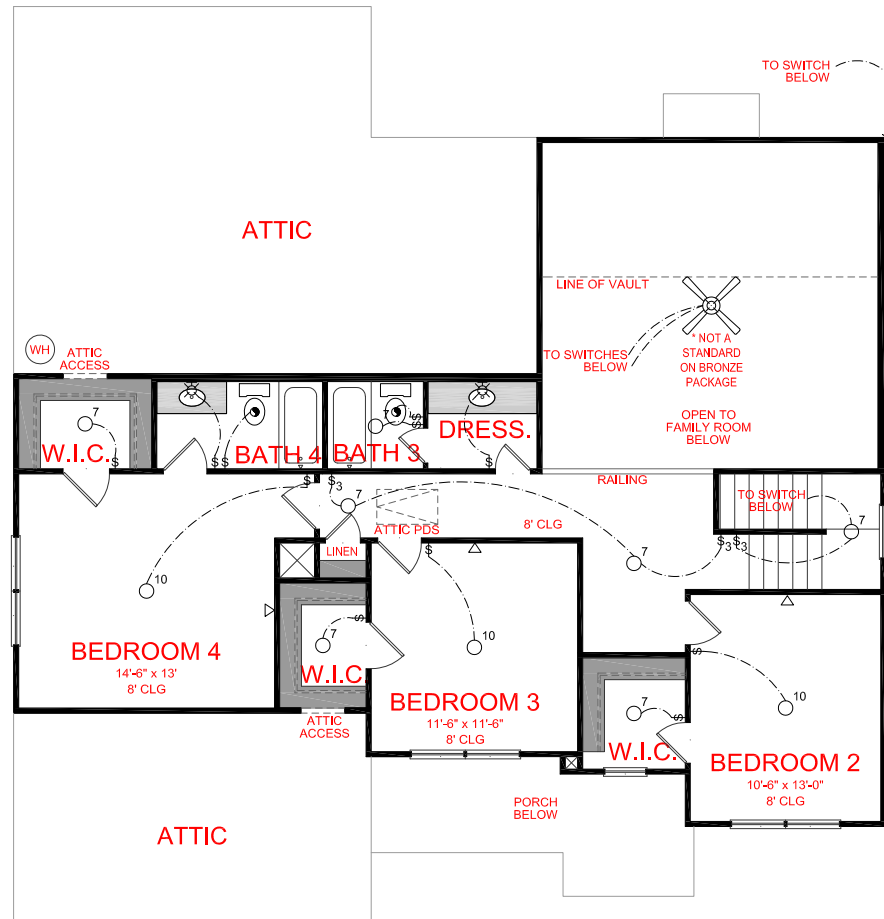
STANTON
 SIDE ENTRY VERSION

JEFF LINDSEY COMMUNITIES
Live your dream.

*THE DRAWING(S) ON THIS PAGE ARE A GRAPHICAL REPRESENTATION ONLY. PLEASE CONSULT YOUR AGENT FOR SPECIFIC INFORMATION REGARDING THIS FLOOR PLAN. THE DESIGN OF THE FLOOR PLAN REPRESENTED IS SUBJECT TO CHANGE WITHOUT NOTICE.

SQUARE FOOTAGE:

FIRST FLOOR:	1,708 SQ. FT.
SECOND FLOOR:	931 SQ. FT.
TOTAL:	2,639 SQ. FT.



SECOND FLOOR

ELECTRICAL LEGEND	
	CEILING LIGHT FIXTURE
	WALL LIGHT FIXTURE
	7" LED DISK
	10" LED DISK
	CEILING FAN
	FLOOD LIGHT FIXTURE
	DUPLEX FLOOR OUTLET
	TELEPHONE
	NETWORK/CABLE
	SWITCH
	3-WAY SWITCH
	4-WAY SWITCH
	MOTION SENSOR SWITCH
	EXHAUST FAN
	EXHAUST FAN/LIGHT
	SCONCE LIGHT FIXTURE

SQUARE FOOTAGE:	
FIRST FLOOR:	1,708 SQ. FT.
SECOND FLOOR:	931 SQ. FT.
TOTAL:	2,639 SQ. FT.

STANTON
SIDE ENTRY VERSION

JEFF LINDSEY COMMUNITIES
Live your dream.

*THE DRAWING(S) ON THIS PAGE ARE A GRAPHICAL REPRESENTATION ONLY. PLEASE CONSULT YOUR AGENT FOR SPECIFIC INFORMATION REGARDING THIS FLOOR PLAN. THE DESIGN OF THE FLOOR PLAN REPRESENTED IS SUBJECT TO CHANGE WITHOUT NOTICE.