

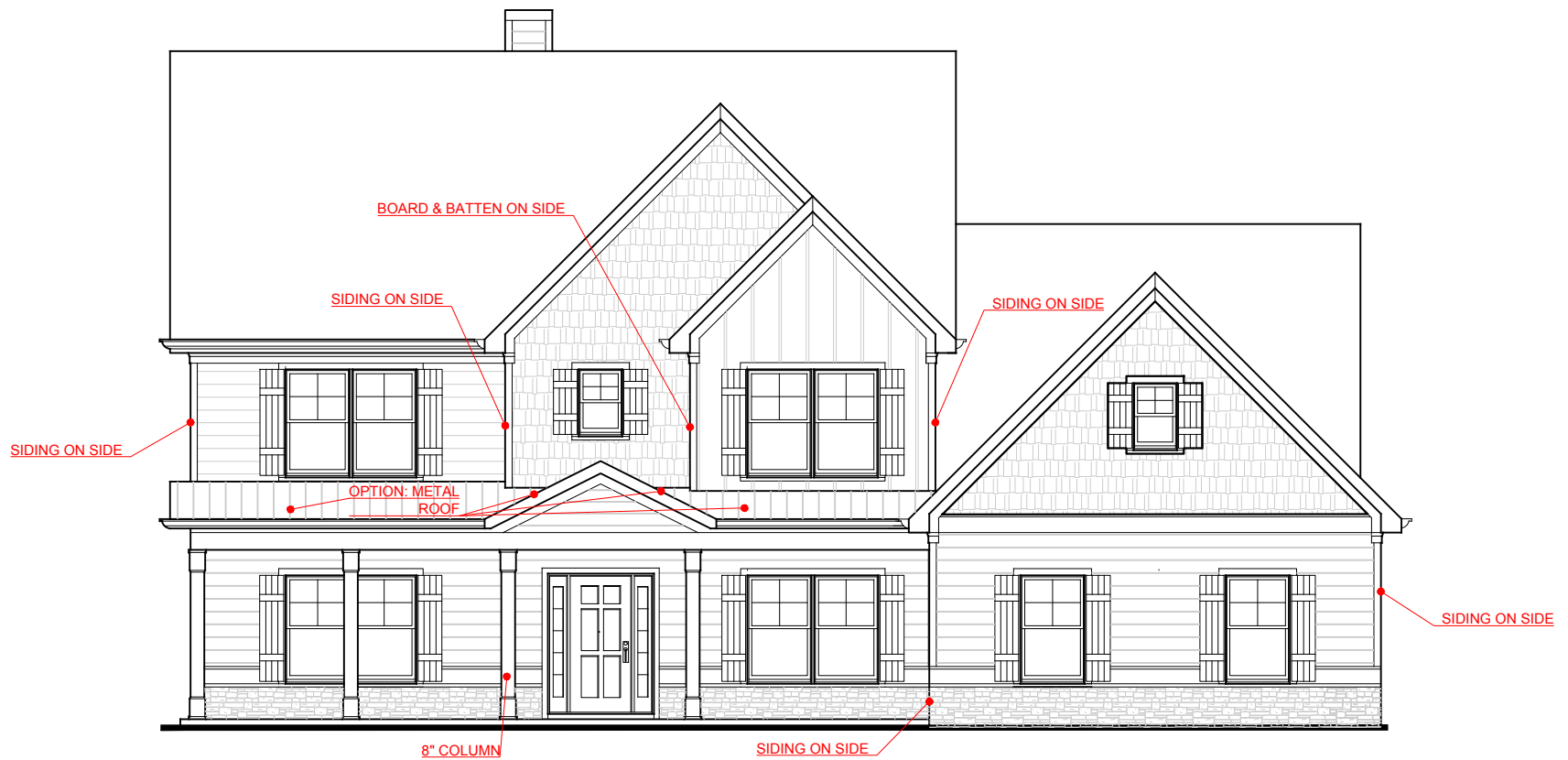
FRONT ELEVATION- A VERSION

TURNER
SIDE ENTRY VERSION



SQUARE FOOTAGE:	
FIRST FLOOR:	2,045
SECOND FLOOR:	994
TOTAL:	3,039

*THE DRAWING(S) ON THIS PAGE ARE A GRAPHICAL REPRESENTATION ONLY. PLEASE CONSULT YOUR AGENT FOR SPECIFIC INFORMATION REGARDING THIS FLOOR PLAN. THE DESIGN OF THE FLOOR PLAN REPRESENTED IS SUBJECT TO CHANGE WITHOUT NOTICE.



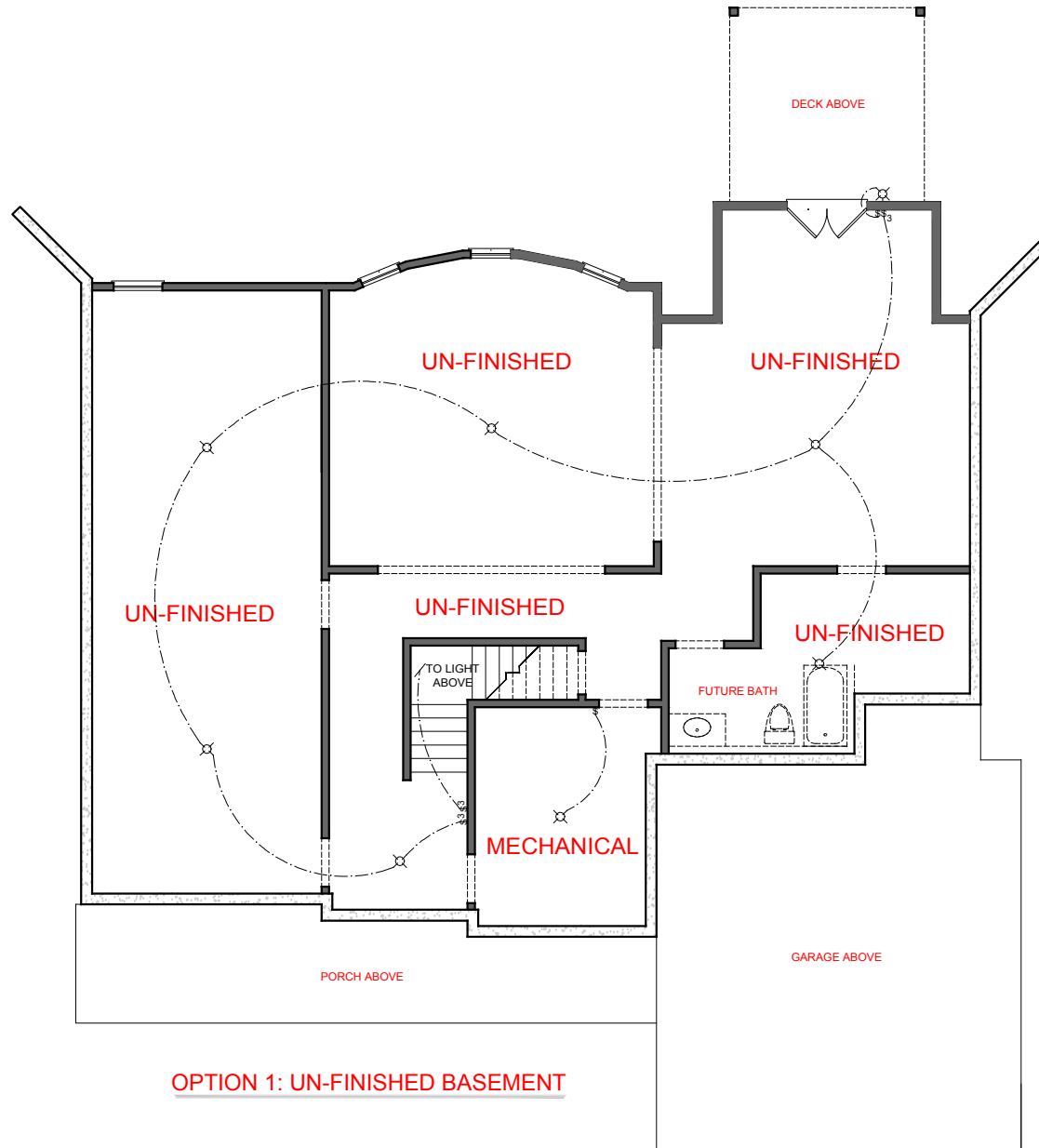
FRONT ELEVATION- B VERSION

TURNER
SIDE ENTRY VERSION

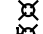

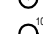



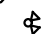


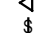
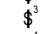
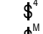






SQUARE FOOTAGE:	
FIRST FLOOR:	2,045
SECOND FLOOR:	994
TOTAL:	3,039

*THE DRAWING(S) ON THIS PAGE ARE A GRAPHICAL REPRESENTATION ONLY. PLEASE CONSULT YOUR AGENT FOR SPECIFIC INFORMATION REGARDING THIS FLOOR PLAN. THE DESIGN OF THE FLOOR PLAN REPRESENTED IS SUBJECT TO CHANGE WITHOUT NOTICE.



OPTION 1: UN-FINISHED BASEMENT

- ELECTRICAL LEGEND**
-  CEILING LIGHT FIXTURE
 -  WALL LIGHT FIXTURE
 -  7" LED DISK
 -  10" LED DISK
 -  CEILING FAN
 -  FLOOD LIGHT FIXTURE
 -  DUPLEX FLOOR OUTLET
 -  TELEPHONE
 -  NETWORK/CABLE
 -  SWITCH
 -  3-WAY SWITCH
 -  4-WAY SWITCH
 -  MOTION SENSOR SWITCH
 -  EXHAUST FAN
 -  EXHAUST FAN/LIGHT
 -  SCONCE LIGHT FIXTURE

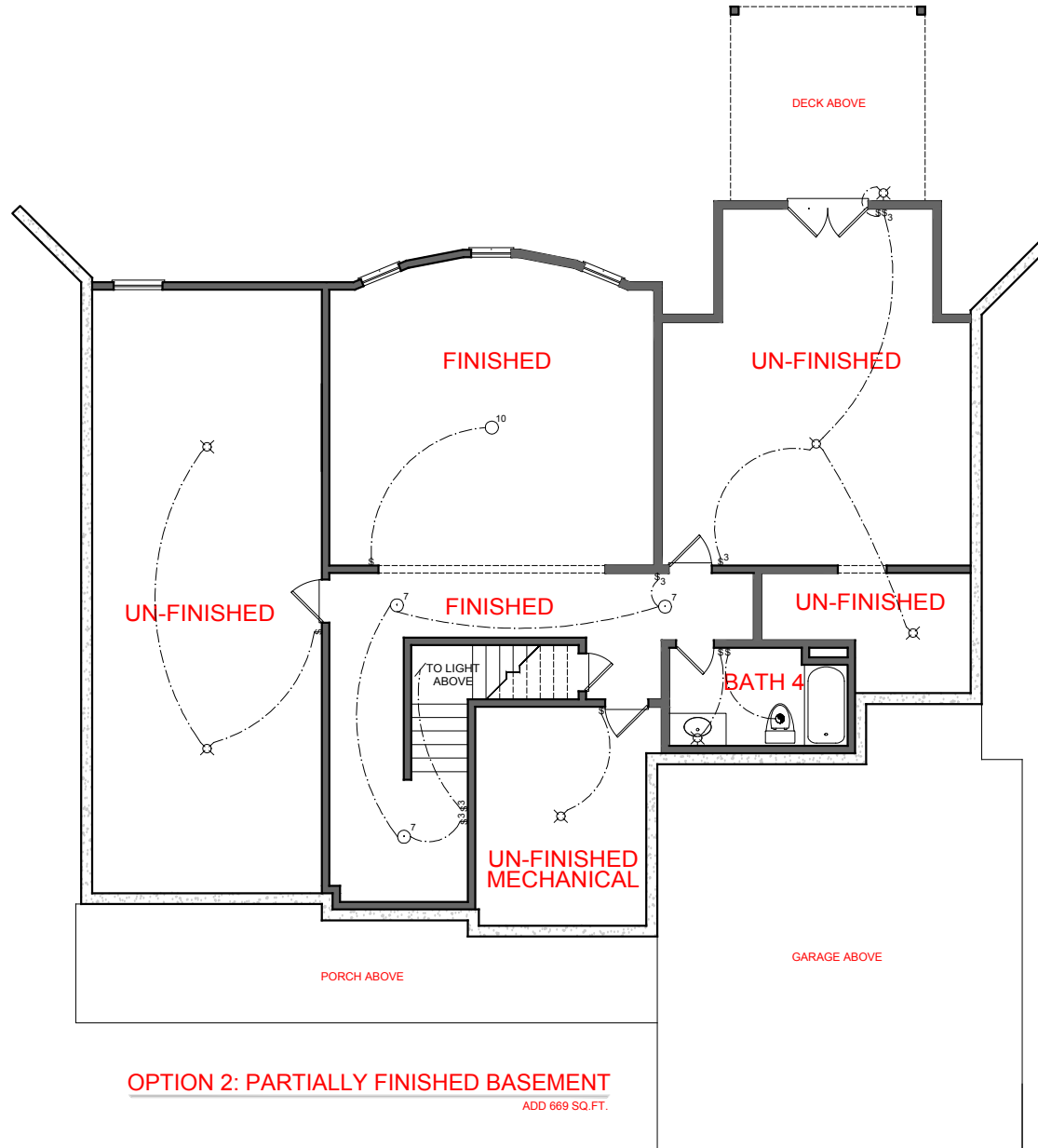
TURNER
SIDE ENTRY VERSION



SQUARE FOOTAGE:

FIRST FLOOR:	2,045
SECOND FLOOR:	994
TOTAL:	3,039

*THE DRAWING(S) ON THIS PAGE ARE A GRAPHICAL REPRESENTATION ONLY. PLEASE CONSULT YOUR AGENT FOR SPECIFIC INFORMATION REGARDING THIS FLOOR PLAN. THE DESIGN OF THE FLOOR PLAN REPRESENTED IS SUBJECT TO CHANGE WITHOUT NOTICE.



OPTION 2: PARTIALLY FINISHED BASEMENT
ADD 669 SQ.FT.

- ELECTRICAL LEGEND**
- CEILING LIGHT FIXTURE
 - WALL LIGHT FIXTURE
 - 7" LED DISK
 - 10" LED DISK
 - CEILING FAN
 - FLOOD LIGHT FIXTURE
 - DUPLEX FLOOR OUTLET
 - TELEPHONE
 - NETWORK/CABLE
 - SWITCH
 - 3-WAY SWITCH
 - 4-WAY SWITCH
 - MOTION SENSOR SWITCH
 - EXHAUST FAN
 - EXHAUST FAN/LIGHT
 - SCONCE LIGHT FIXTURE

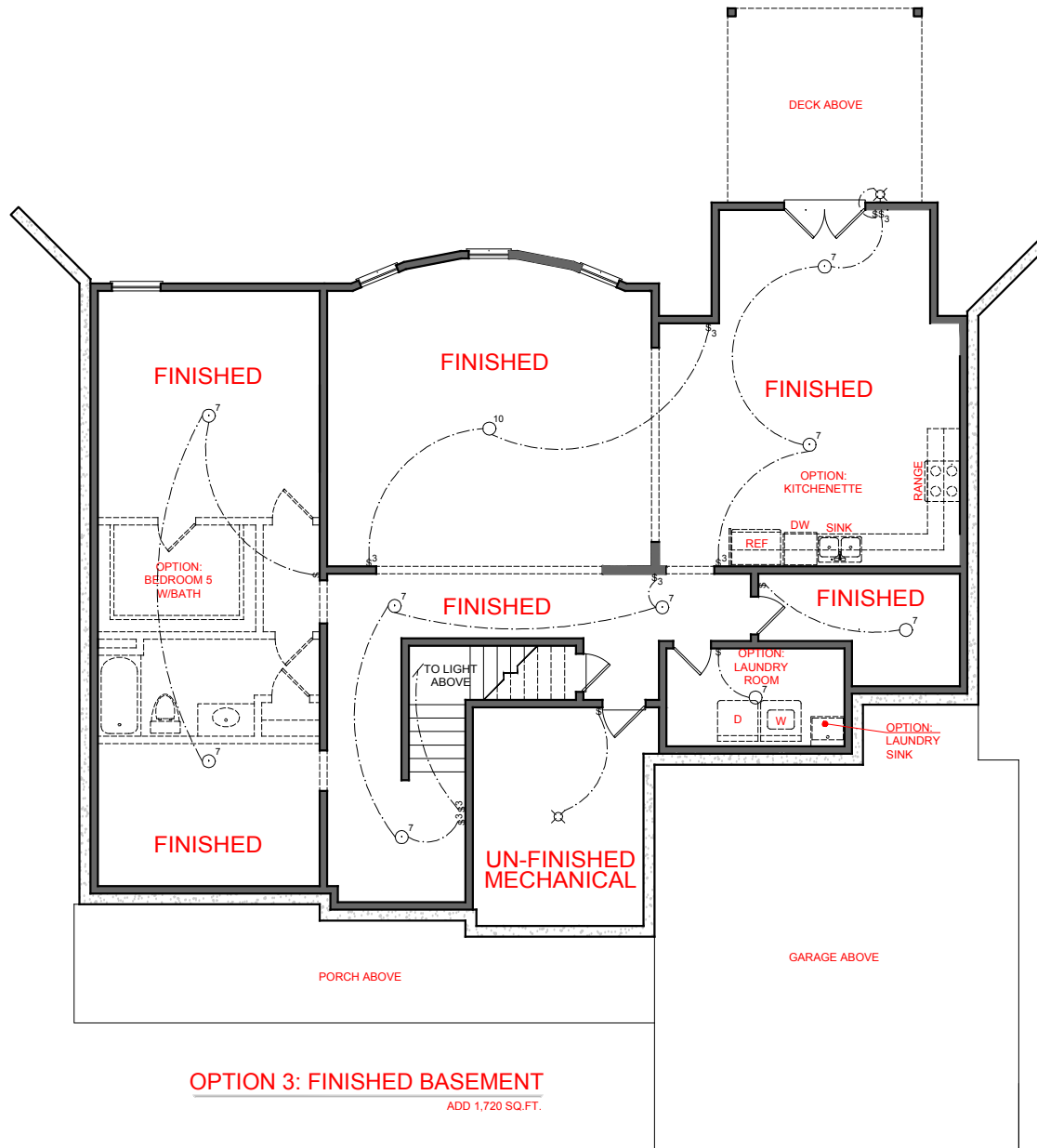
SQUARE FOOTAGE:

FIRST FLOOR:	2,045
SECOND FLOOR:	994
TOTAL:	3,039

TURNER
SIDE ENTRY VERSION

JEFF LINDSEY COMMUNITIES
Live your dream.

*THE DRAWING(S) ON THIS PAGE ARE A GRAPHICAL REPRESENTATION ONLY. PLEASE CONSULT YOUR AGENT FOR SPECIFIC INFORMATION REGARDING THIS FLOOR PLAN. THE DESIGN OF THE FLOOR PLAN REPRESENTED IS SUBJECT TO CHANGE WITHOUT NOTICE.



OPTION 3: FINISHED BASEMENT
ADD 1,720 SQ.FT.

- ELECTRICAL LEGEND**
- CEILING LIGHT FIXTURE
 - WALL LIGHT FIXTURE
 - 7" LED DISK
 - 10" LED DISK
 - CEILING FAN
 - FLOOD LIGHT FIXTURE
 - DUPLEX FLOOR OUTLET
 - TELEPHONE
 - NETWORK/CABLE
 - SWITCH
 - 3-WAY SWITCH
 - 4-WAY SWITCH
 - MOTION SENSOR SWITCH
 - EXHAUST FAN
 - EXHAUST FAN/LIGHT
 - SCONCE LIGHT FIXTURE

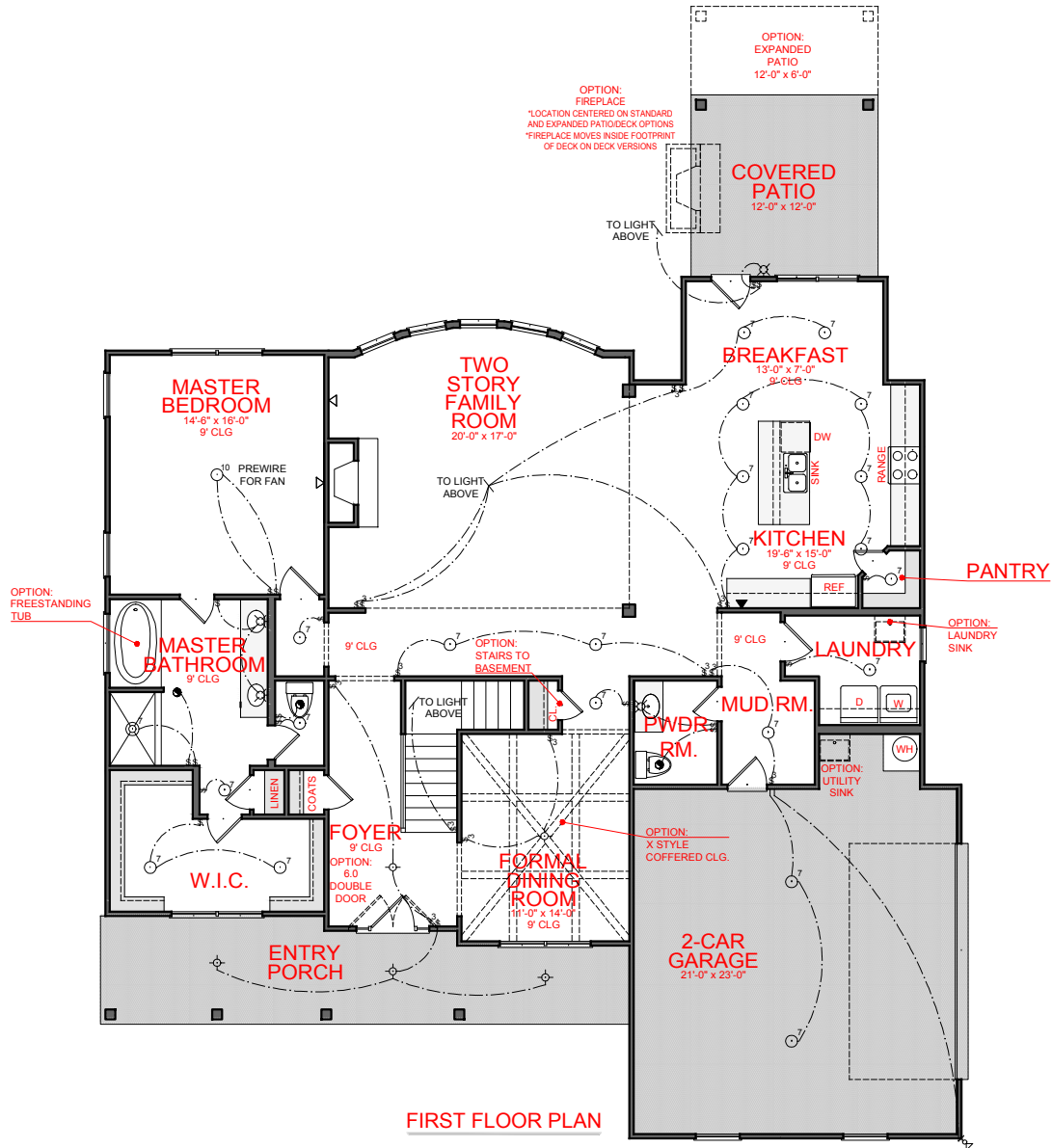
TURNER
SIDE ENTRY VERSION

JEFF LINDSEY COMMUNITIES
Live your dream.

SQUARE FOOTAGE:

FIRST FLOOR:	2,045
SECOND FLOOR:	994
TOTAL:	3,039

*THE DRAWING(S) ON THIS PAGE ARE A GRAPHICAL REPRESENTATION ONLY. PLEASE CONSULT YOUR AGENT FOR SPECIFIC INFORMATION REGARDING THIS FLOOR PLAN. THE DESIGN OF THE FLOOR PLAN REPRESENTED IS SUBJECT TO CHANGE WITHOUT NOTICE.



FIRST FLOOR PLAN

ELECTRICAL LEGEND

	CEILING LIGHT FIXTURE
	WALL LIGHT FIXTURE
	7" LED DISK
	10" LED DISK
	CEILING FAN
	FLOOD LIGHT FIXTURE
	DUPLEX FLOOR OUTLET
	TELEPHONE
	NETWORK/CABLE
	SWITCH
	3-WAY SWITCH
	4-WAY SWITCH
	MOTION SENSOR SWITCH
	EXHAUST FAN
	EXHAUST FAN/LIGHT
	SCONCE LIGHT FIXTURE

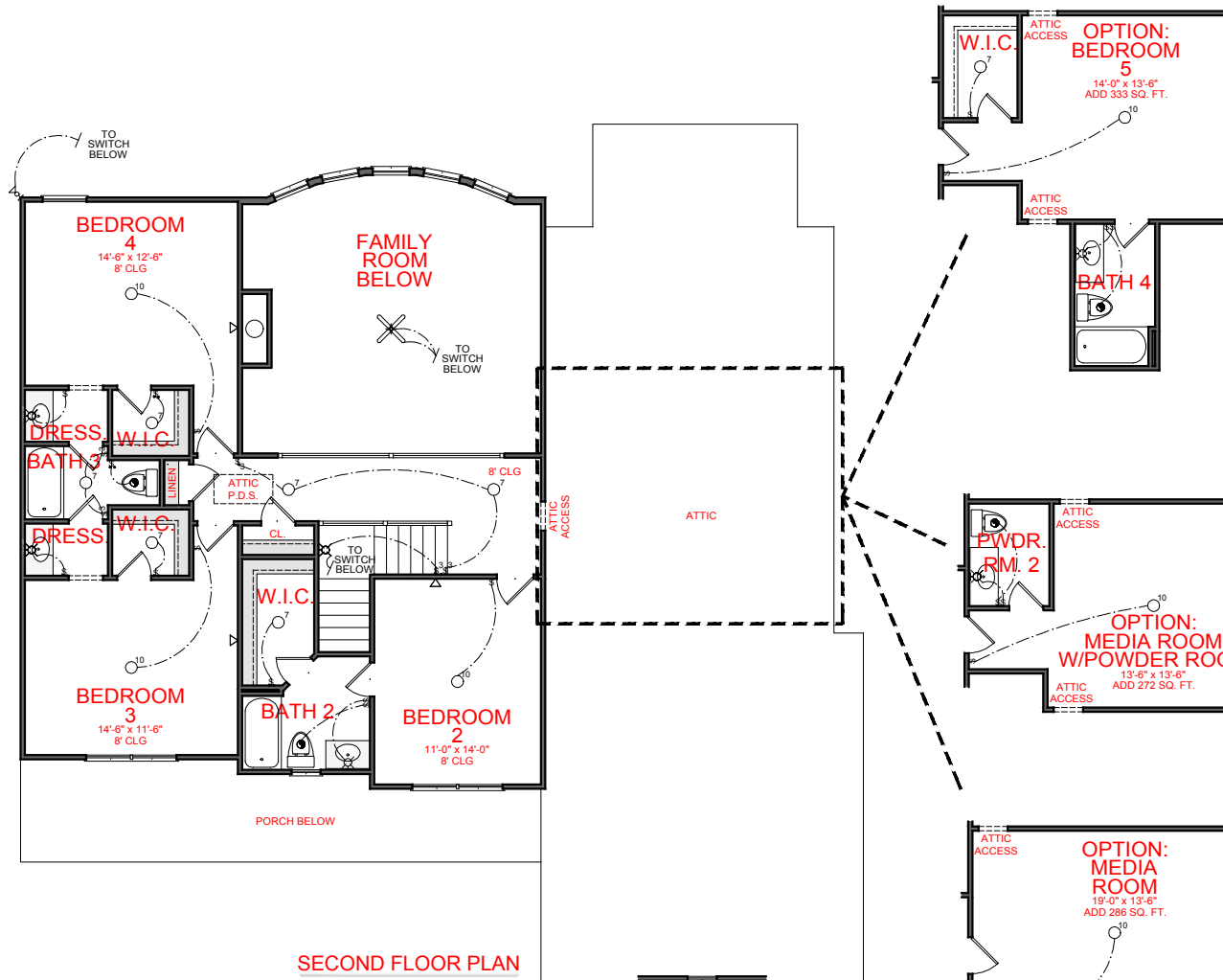
TURNER
SIDE ENTRY VERSION

JEFF LINDSEY COMMUNITIES
Live your dream.

SQUARE FOOTAGE:

FIRST FLOOR:	2,045
SECOND FLOOR:	994
TOTAL:	3,039

*THE DRAWING(S) ON THIS PAGE ARE A GRAPHICAL REPRESENTATION ONLY. PLEASE CONSULT YOUR AGENT FOR SPECIFIC INFORMATION REGARDING THIS FLOOR PLAN. THE DESIGN OF THE FLOOR PLAN REPRESENTED IS SUBJECT TO CHANGE WITHOUT NOTICE.



- ELECTRICAL LEGEND**
- CEILING LIGHT FIXTURE
 - WALL LIGHT FIXTURE
 - 7" LED DISK
 - 10" LED DISK
 - CEILING FAN
 - FLOOD LIGHT FIXTURE
 - DUPLEX FLOOR OUTLET
 - TELEPHONE
 - NETWORK/CABLE
 - SWITCH
 - 3-WAY SWITCH
 - 4-WAY SWITCH
 - MOTION SENSOR SWITCH
 - EXHAUST FAN
 - EXHAUST FAN/LIGHT
 - SCONCE LIGHT FIXTURE

TURNER
SIDE ENTRY VERSION



SQUARE FOOTAGE:

FIRST FLOOR:	2,045
SECOND FLOOR:	994
TOTAL:	3,039

*THE DRAWING(S) ON THIS PAGE ARE A GRAPHICAL REPRESENTATION ONLY. PLEASE CONSULT YOUR AGENT FOR SPECIFIC INFORMATION REGARDING THIS FLOOR PLAN. THE DESIGN OF THE FLOOR PLAN REPRESENTED IS SUBJECT TO CHANGE WITHOUT NOTICE.