

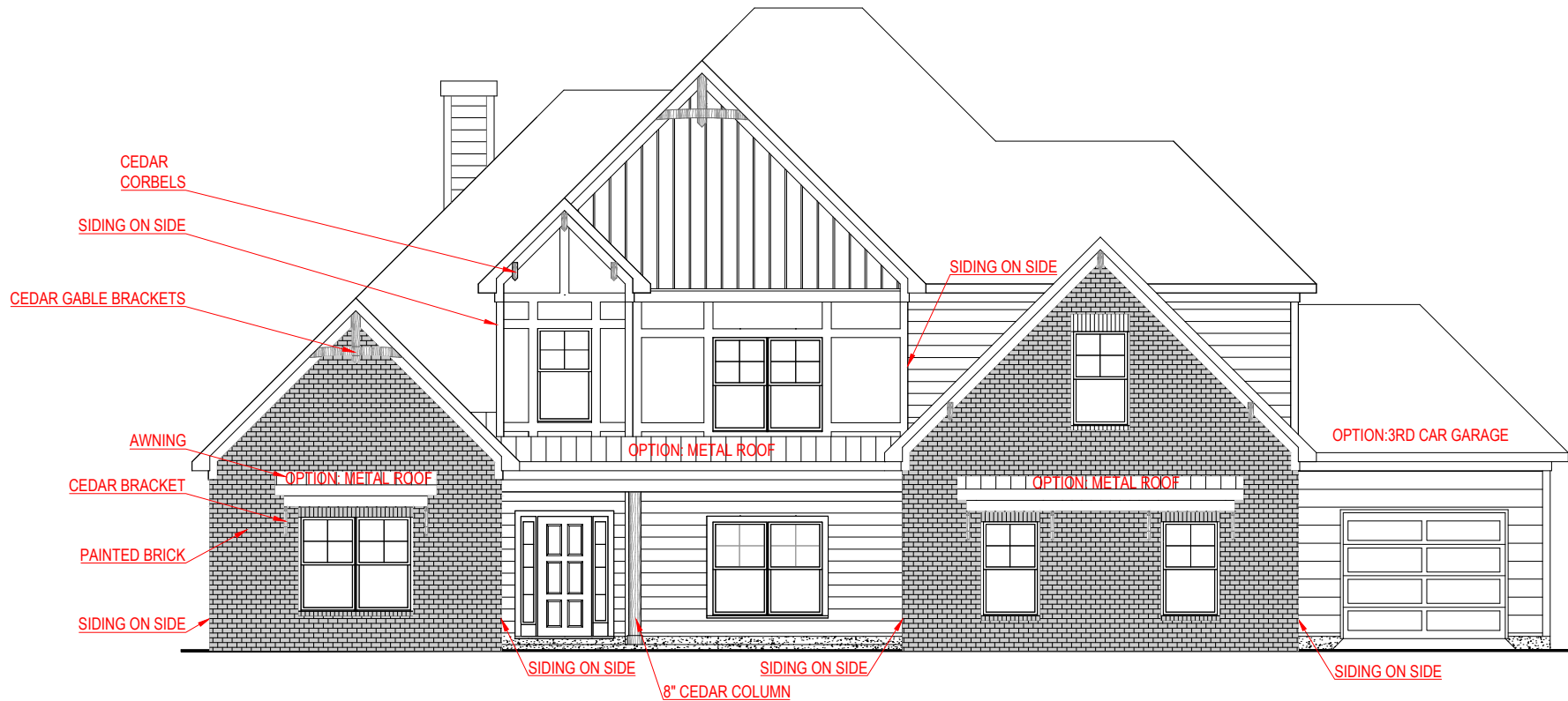
FRONT ELEVATION - A VERSION

WOODBURY
SIDE ENTRY VERSION



SQUARE FOOTAGE:	
FIRST FLOOR:	3,014 SQ. FT.
SECOND FLOOR:	688 SQ. FT.
TOTAL:	3,702 SQ. FT.

*THE DRAWING(S) ON THIS PAGE ARE A GRAPHICAL REPRESENTATION ONLY. PLEASE CONSULT YOUR AGENT FOR SPECIFIC INFORMATION REGARDING THIS FLOOR PLAN. THE DESIGN OF THE FLOOR PLAN REPRESENTED IS SUBJECT TO CHANGE WITHOUT NOTICE.



FRONT ELEVATION - F VERSION

WOODBURY
SIDE ENTRY VERSION



SQUARE FOOTAGE:	
FIRST FLOOR:	3,014 SQ. FT.
SECOND FLOOR:	688 SQ. FT.
TOTAL:	3,702 SQ. FT.

*THE DRAWING(S) ON THIS PAGE ARE A GRAPHICAL REPRESENTATION ONLY. PLEASE CONSULT YOUR AGENT FOR SPECIFIC INFORMATION REGARDING THIS FLOOR PLAN. THE DESIGN OF THE FLOOR PLAN REPRESENTED IS SUBJECT TO CHANGE WITHOUT NOTICE.



REAR ELEVATION - STANDARD PATIO



REAR ELEVATION - EXPANDED PATIO OPTION

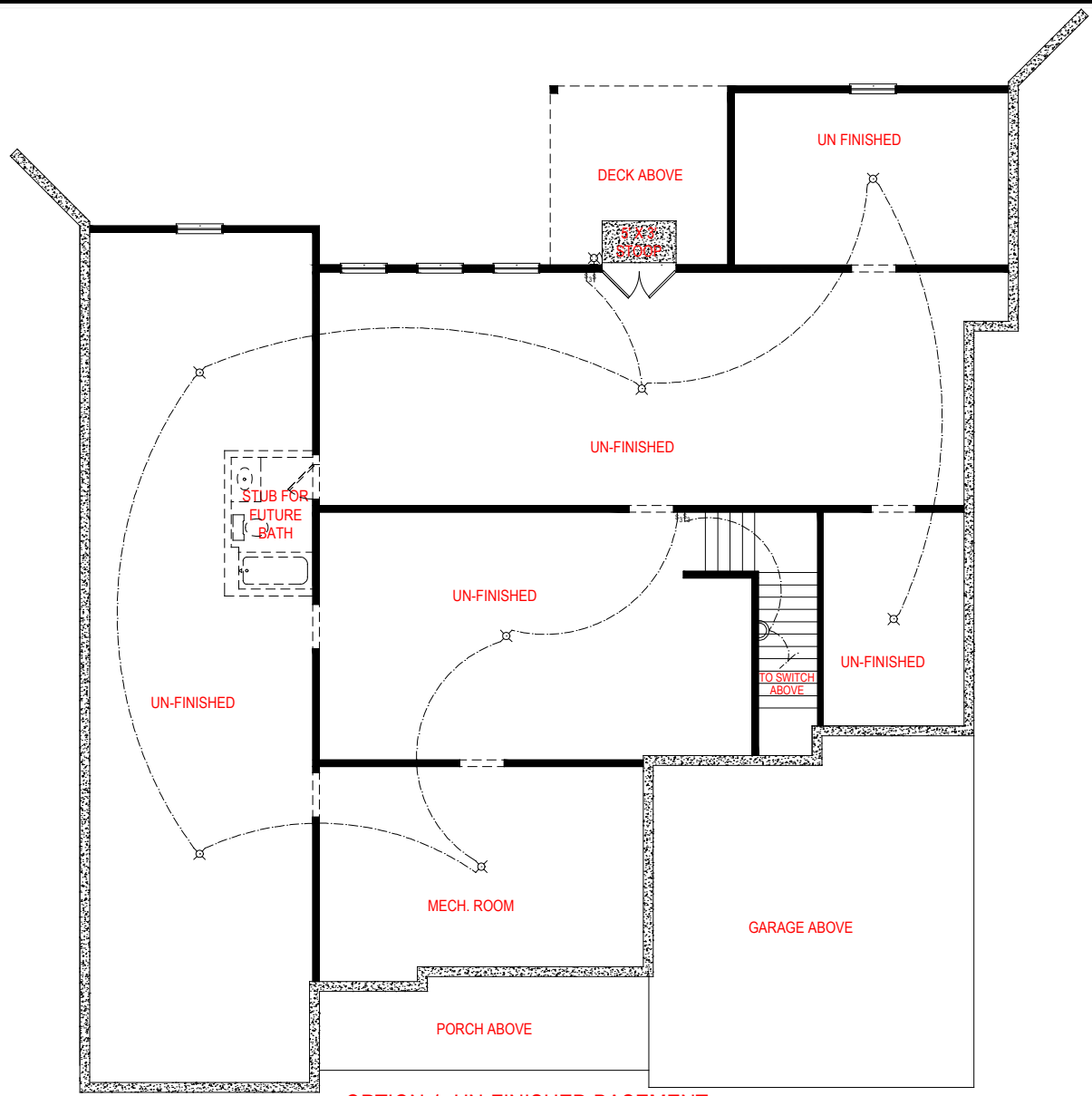
WOODBURY

SIDE ENTRY VERSION



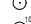

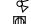

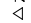
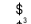
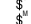







*THE DRAWING(S) ON THIS PAGE ARE A GRAPHICAL REPRESENTATION ONLY. PLEASE CONSULT YOUR AGENT FOR SPECIFIC INFORMATION REGARDING THIS FLOOR PLAN. THE DESIGN OF THE FLOOR PLAN REPRESENTED IS SUBJECT TO CHANGE WITHOUT NOTICE.

SQUARE FOOTAGE:	
FIRST FLOOR:	3,014 SQ. FT.
SECOND FLOOR:	688 SQ. FT.
TOTAL:	3,702 SQ. FT.



OPTION 1: UN-FINISHED BASEMENT

- ELECTRICAL LEGEND**
-  CEILING LIGHT FIXTURE
 -  WALL LIGHT FIXTURE
 -  7" LED DISK
 -  10" LED DISK
 -  FLOOD LIGHT FIXTURE
 -  DUPLEX FLOOR OUTLET
 -  TELEPHONE
 -  TELEVISION
 -  SWITCH
 -  3-WAY SWITCH
 -  MOTION SENSOR SWITCH
 -  EXHAUST FAN
 -  EXHAUST FAN/LIGHT
 -  SCONCE LIGHT FIXTURE

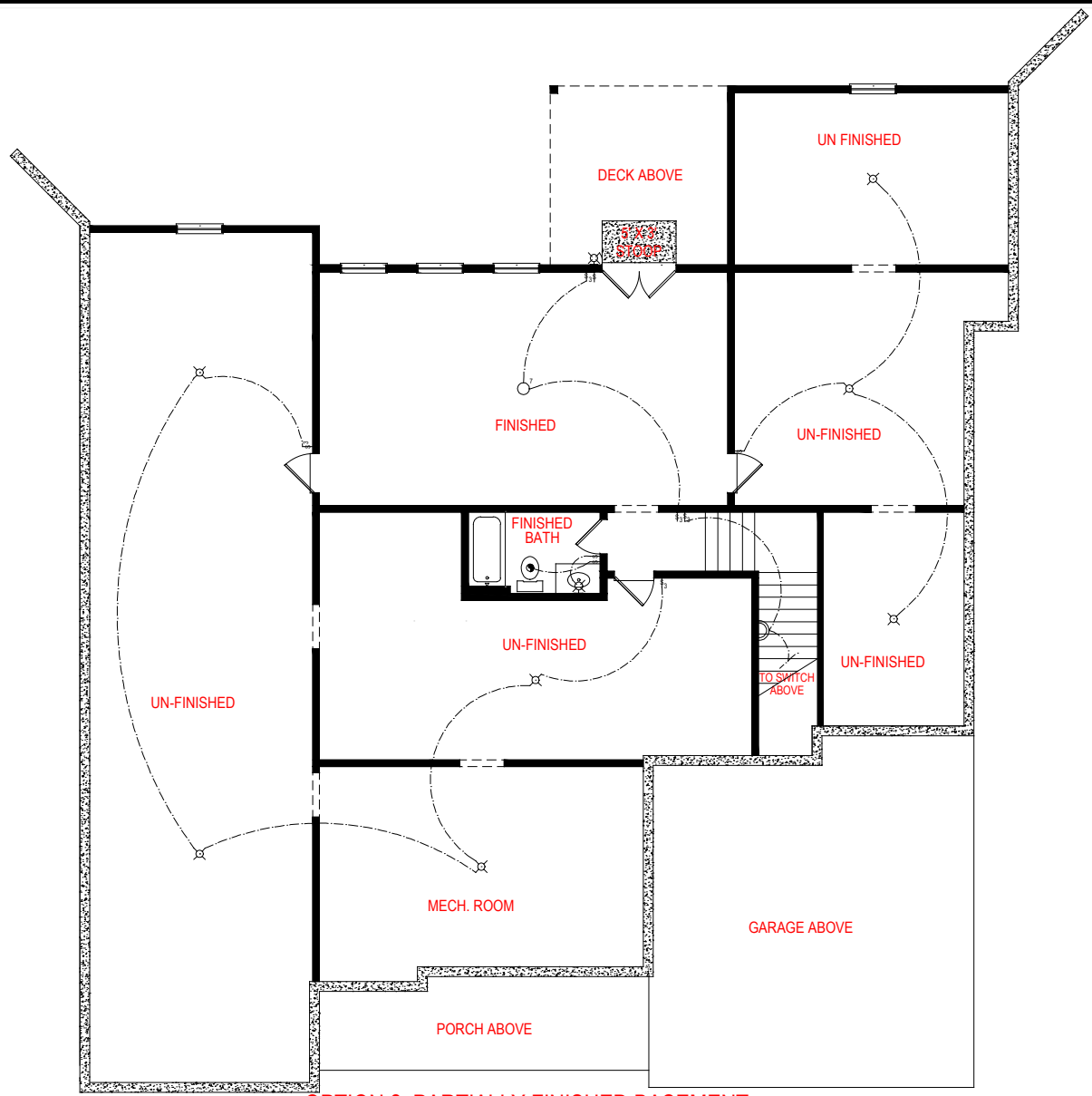
SQUARE FOOTAGE:

FIRST FLOOR:	3,014 SQ. FT.
SECOND FLOOR:	688 SQ. FT.
TOTAL:	3,702 SQ. FT.



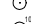

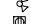

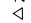
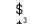
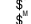





WOODBURY
SIDE ENTRY VERSION



*THE DRAWING(S) ON THIS PAGE ARE A GRAPHICAL REPRESENTATION ONLY. PLEASE CONSULT YOUR AGENT FOR SPECIFIC INFORMATION REGARDING THIS FLOOR PLAN. THE DESIGN OF THE FLOOR PLAN REPRESENTED IS SUBJECT TO CHANGE WITHOUT NOTICE.



OPTION 2: PARTIALLY FINISHED BASEMENT
529 SQ.FT.

- ELECTRICAL LEGEND**
-  CEILING LIGHT FIXTURE
 -  WALL LIGHT FIXTURE
 -  7" LED DISK
 -  10" LED DISK
 -  FLOOD LIGHT FIXTURE
 -  DUPLEX FLOOR OUTLET
 -  TELEPHONE
 -  TELEVISION
 -  SWITCH
 -  3-WAY SWITCH
 -  MOTION SENSOR SWITCH
 -  EXHAUST FAN
 -  EXHAUST FAN/LIGHT
 -  SCONCE LIGHT FIXTURE

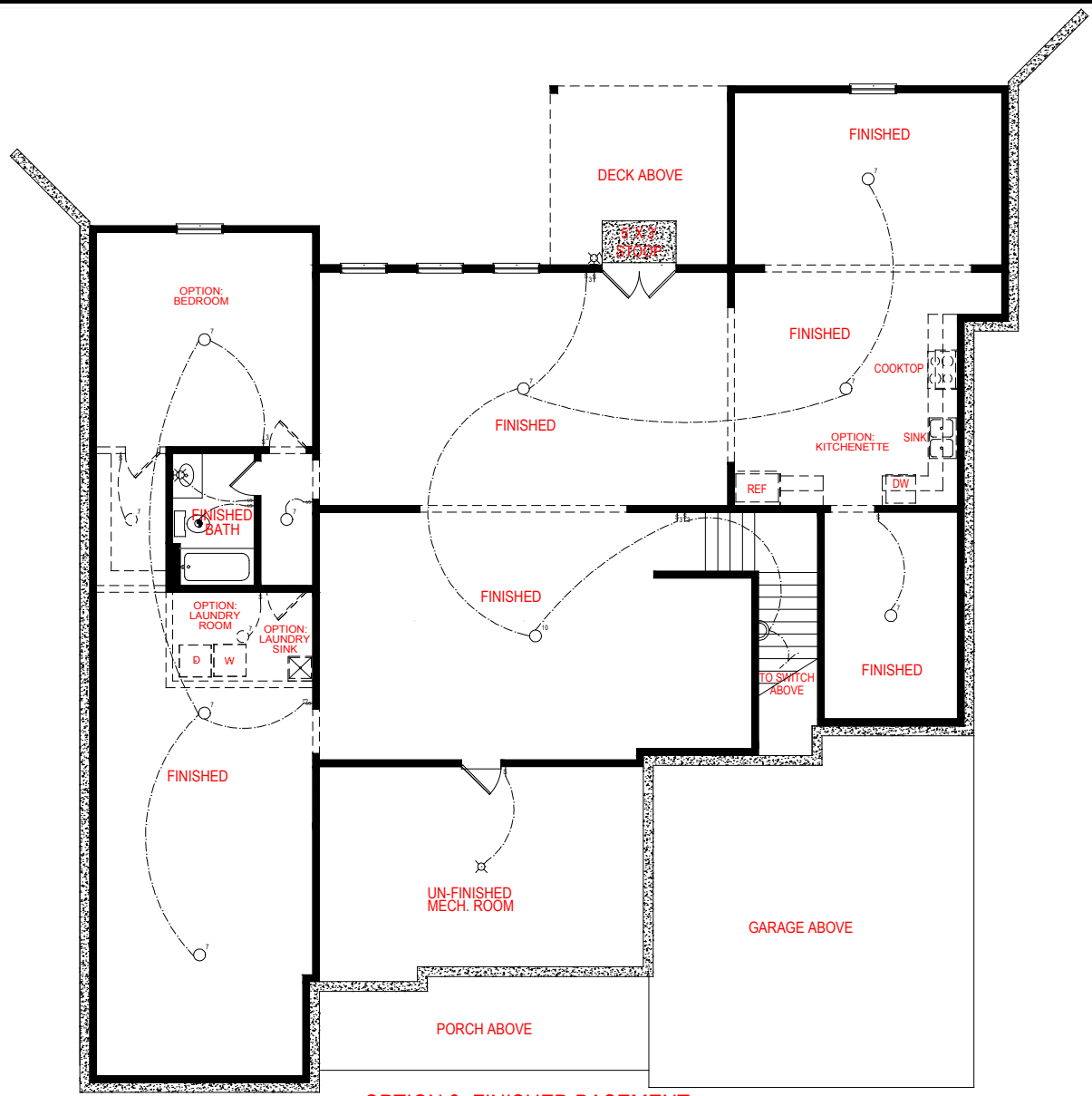
SQUARE FOOTAGE:

FIRST FLOOR:	3,014 SQ. FT.
SECOND FLOOR:	688 SQ. FT.
TOTAL:	3,702 SQ. FT.

WOODBURY
SIDE ENTRY VERSION



*THE DRAWING(S) ON THIS PAGE ARE A GRAPHICAL REPRESENTATION ONLY. PLEASE CONSULT YOUR AGENT FOR SPECIFIC INFORMATION REGARDING THIS FLOOR PLAN. THE DESIGN OF THE FLOOR PLAN REPRESENTED IS SUBJECT TO CHANGE WITHOUT NOTICE.



OPTION 3: FINISHED BASEMENT
2,494 SQ.FT.

- ELECTRICAL LEGEND**
- CEILING LIGHT FIXTURE
 - WALL LIGHT FIXTURE
 - 7" LED DISK
 - 10" LED DISK
 - FLOOD LIGHT FIXTURE
 - DUPLEX FLOOR OUTLET
 - TELEPHONE
 - TELEVISION
 - SWITCH
 - 3-WAY SWITCH
 - MOTION SENSOR SWITCH
 - EXHAUST FAN
 - EXHAUST FAN/LIGHT
 - SCONCE LIGHT FIXTURE

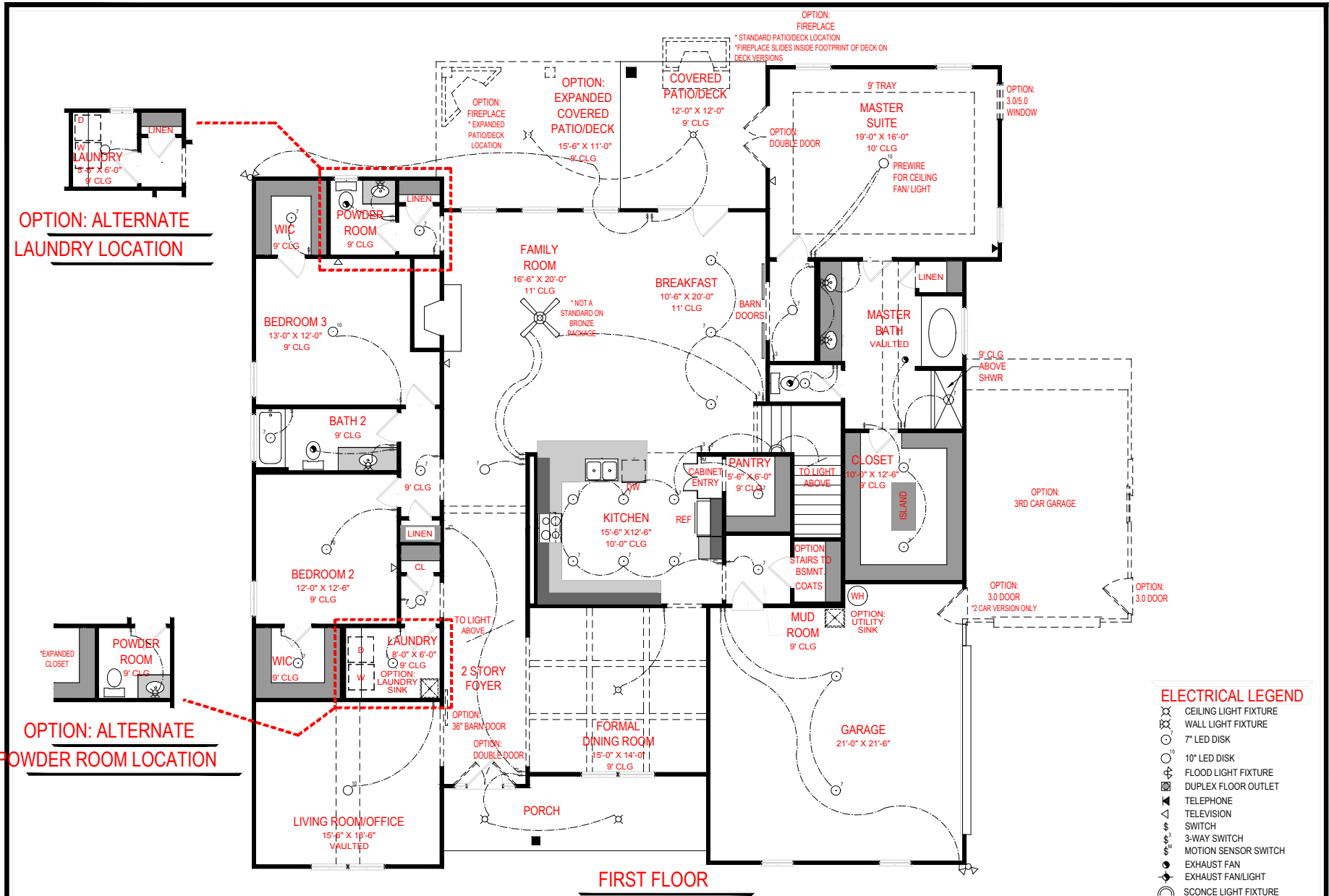
SQUARE FOOTAGE:

FIRST FLOOR:	3,014 SQ. FT.
SECOND FLOOR:	688 SQ. FT.
TOTAL:	3,702 SQ. FT.

WOODBURY
SIDE ENTRY VERSION



*THE DRAWING(S) ON THIS PAGE ARE A GRAPHICAL REPRESENTATION ONLY. PLEASE CONSULT YOUR AGENT FOR SPECIFIC INFORMATION REGARDING THIS FLOOR PLAN. THE DESIGN OF THE FLOOR PLAN REPRESENTED IS SUBJECT TO CHANGE WITHOUT NOTICE.



FIRST FLOOR

WOODBURY

SIDE ENTRY VERSION

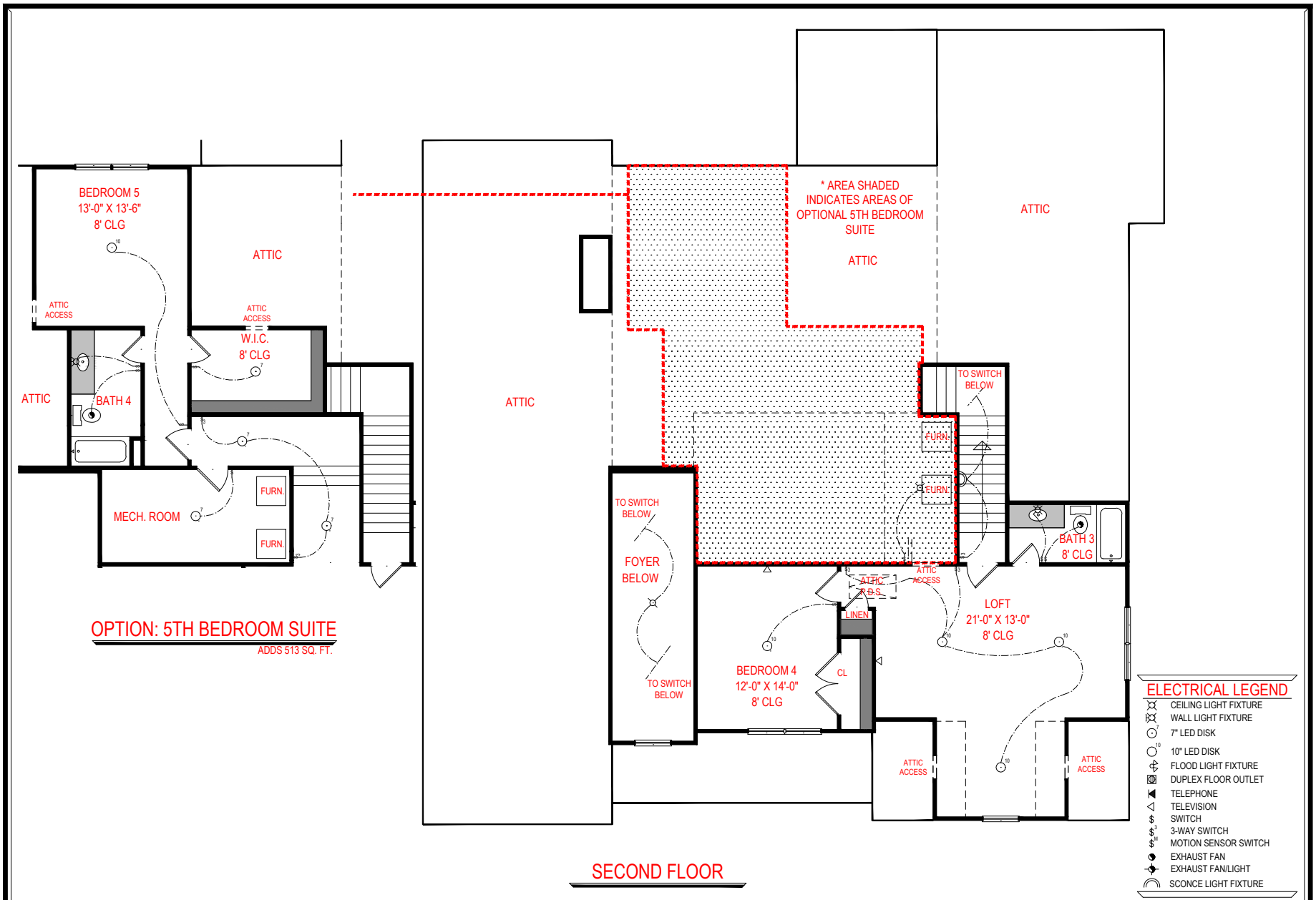


- ELECTRICAL LEGEND**
- CEILING LIGHT FIXTURE
 - WALL LIGHT FIXTURE
 - 7" LED DISK
 - 10" LED DISK
 - FLOOD LIGHT FIXTURE
 - DUPLEX FLOOR OUTLET
 - TELEPHONE
 - TELEVISION
 - SWITCH
 - 3-WAY SWITCH
 - MOTION SENSOR SWITCH
 - EXHAUST FAN
 - EXHAUST FAN/LIGHT
 - SCONCE LIGHT FIXTURE

SQUARE FOOTAGE:

FIRST FLOOR:	3,014 SQ. FT.
SECOND FLOOR:	688 SQ. FT.
TOTAL:	3,702 SQ. FT.

*THE DRAWING(S) ON THIS PAGE ARE A GRAPHICAL REPRESENTATION ONLY. PLEASE CONSULT YOUR AGENT FOR SPECIFIC INFORMATION REGARDING THIS FLOOR PLAN. THE DESIGN OF THE FLOOR PLAN REPRESENTED IS SUBJECT TO CHANGE WITHOUT NOTICE.



OPTION: 5TH BEDROOM SUITE
 ADDS 513 SQ. FT.

SECOND FLOOR

ELECTRICAL LEGEND

- CEILING LIGHT FIXTURE
- WALL LIGHT FIXTURE
- 7" LED DISK
- 10" LED DISK
- FLOOD LIGHT FIXTURE
- DUPLEX FLOOR OUTLET
- TELEPHONE
- TELEVISION
- SWITCH
- 3-WAY SWITCH
- MOTION SENSOR SWITCH
- EXHAUST FAN
- EXHAUST FAN/LIGHT
- SCONCE LIGHT FIXTURE

WOODBURY
 SIDE ENTRY VERSION



SQUARE FOOTAGE:

FIRST FLOOR:	3,014 SQ. FT.
SECOND FLOOR:	688 SQ. FT.
TOTAL:	3,702 SQ. FT.

*THE DRAWING(S) ON THIS PAGE ARE A GRAPHICAL REPRESENTATION ONLY. PLEASE CONSULT YOUR AGENT FOR SPECIFIC INFORMATION REGARDING THIS FLOOR PLAN. THE DESIGN OF THE FLOOR PLAN REPRESENTED IS SUBJECT TO CHANGE WITHOUT NOTICE.