

FRONT ELEVATION - A VERSION

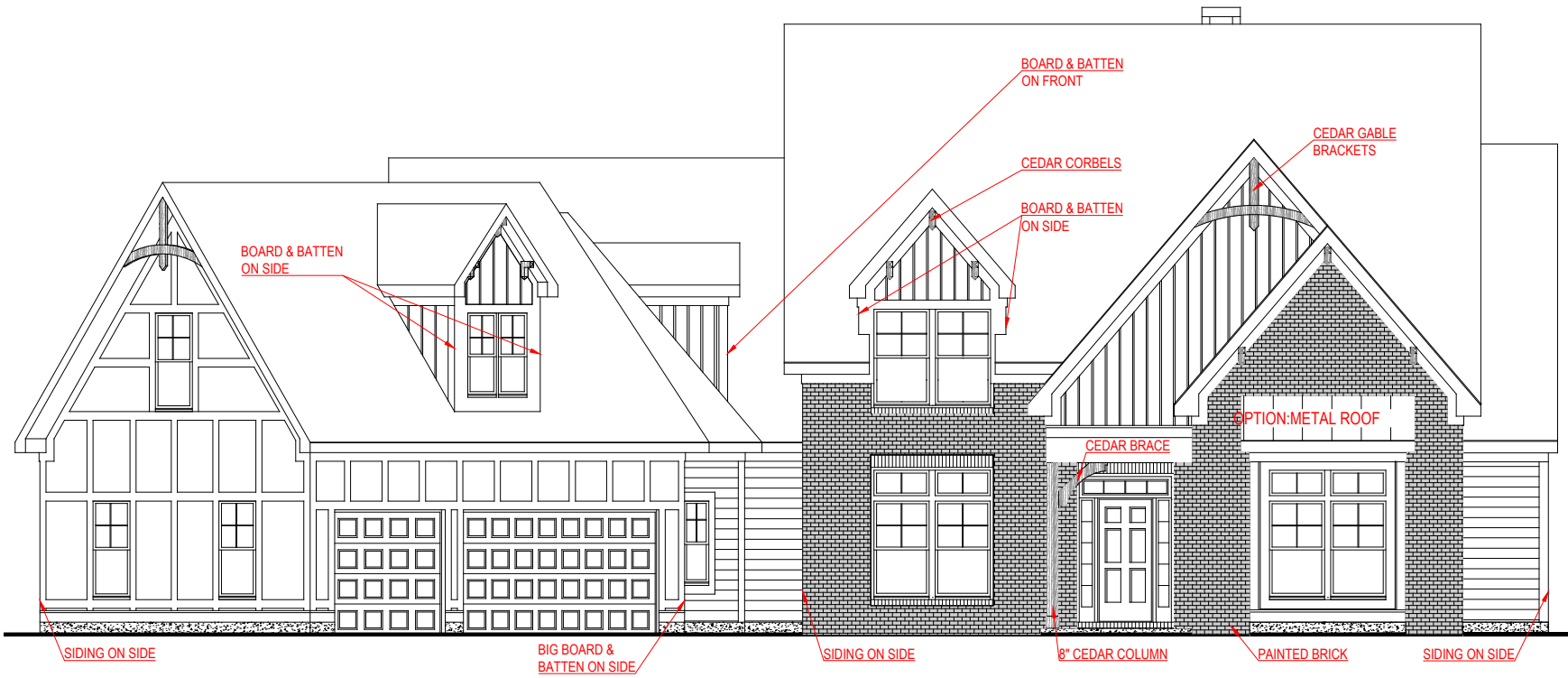
# BELMONT

45° VERSION



\*THE DRAWING(S) ON THIS PAGE ARE A GRAPHICAL REPRESENTATION ONLY. PLEASE CONSULT YOUR AGENT FOR SPECIFIC INFORMATION REGARDING THIS FLOOR PLAN. THE DESIGN OF THE FLOOR PLAN REPRESENTED IS SUBJECT TO CHANGE WITHOUT NOTICE.

SQUARE FOOTAGE:	
FIRST FLOOR:	2,470 SQ. FT.
SECOND FLOOR:	1,740 SQ. FT.
TOTAL:	4,210 SQ. FT.



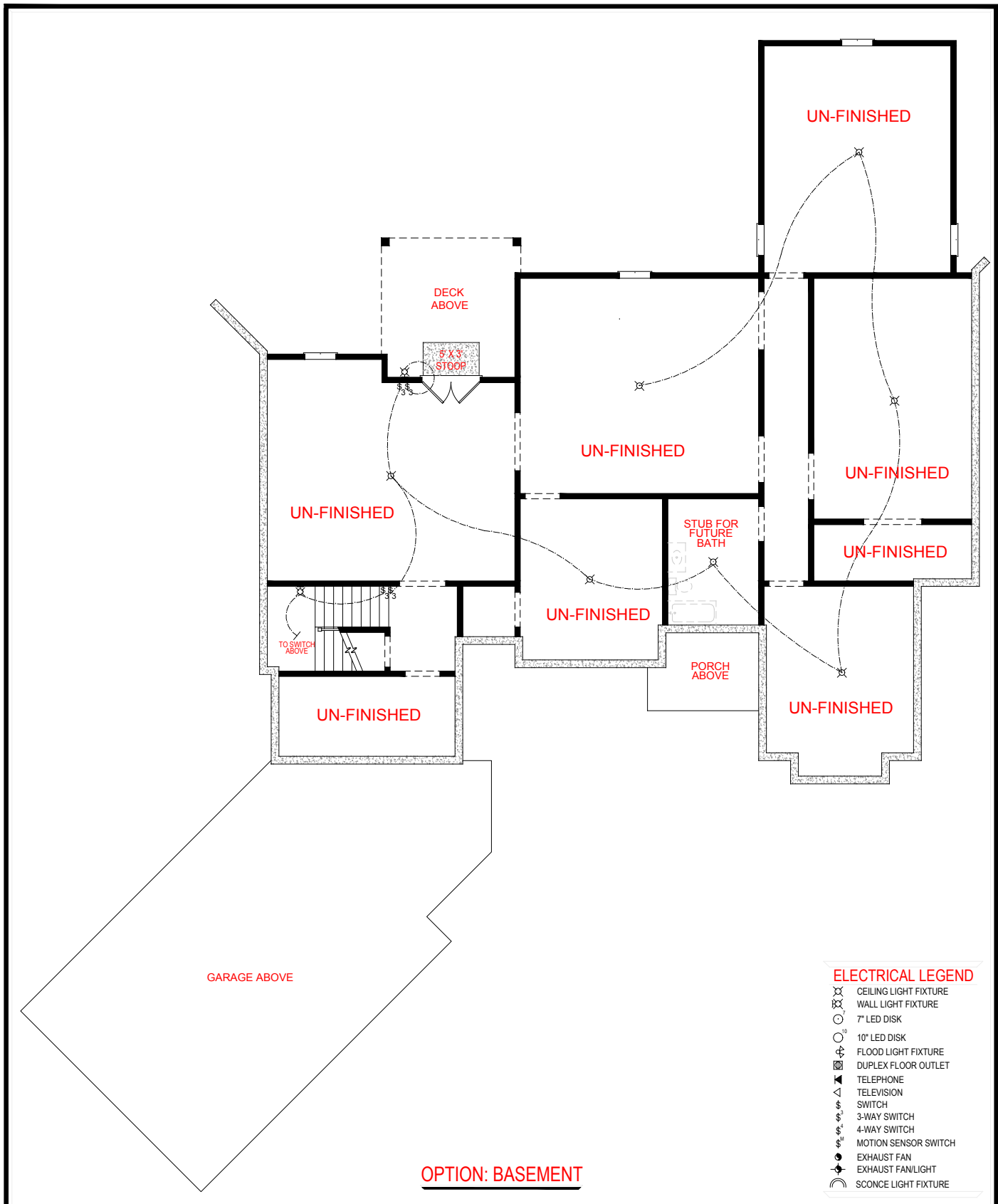
FRONT ELEVATION - F VERSION

**BELMONT**  
45° VERSION



\*THE DRAWING(S) ON THIS PAGE ARE A GRAPHICAL REPRESENTATION ONLY. PLEASE CONSULT YOUR AGENT FOR SPECIFIC INFORMATION REGARDING THIS FLOOR PLAN. THE DESIGN OF THE FLOOR PLAN REPRESENTED IS SUBJECT TO CHANGE WITHOUT NOTICE.

SQUARE FOOTAGE:	
FIRST FLOOR:	2,470 SQ. FT.
SECOND FLOOR:	1,740 SQ. FT.
TOTAL:	4,210 SQ. FT.



# BELMONT

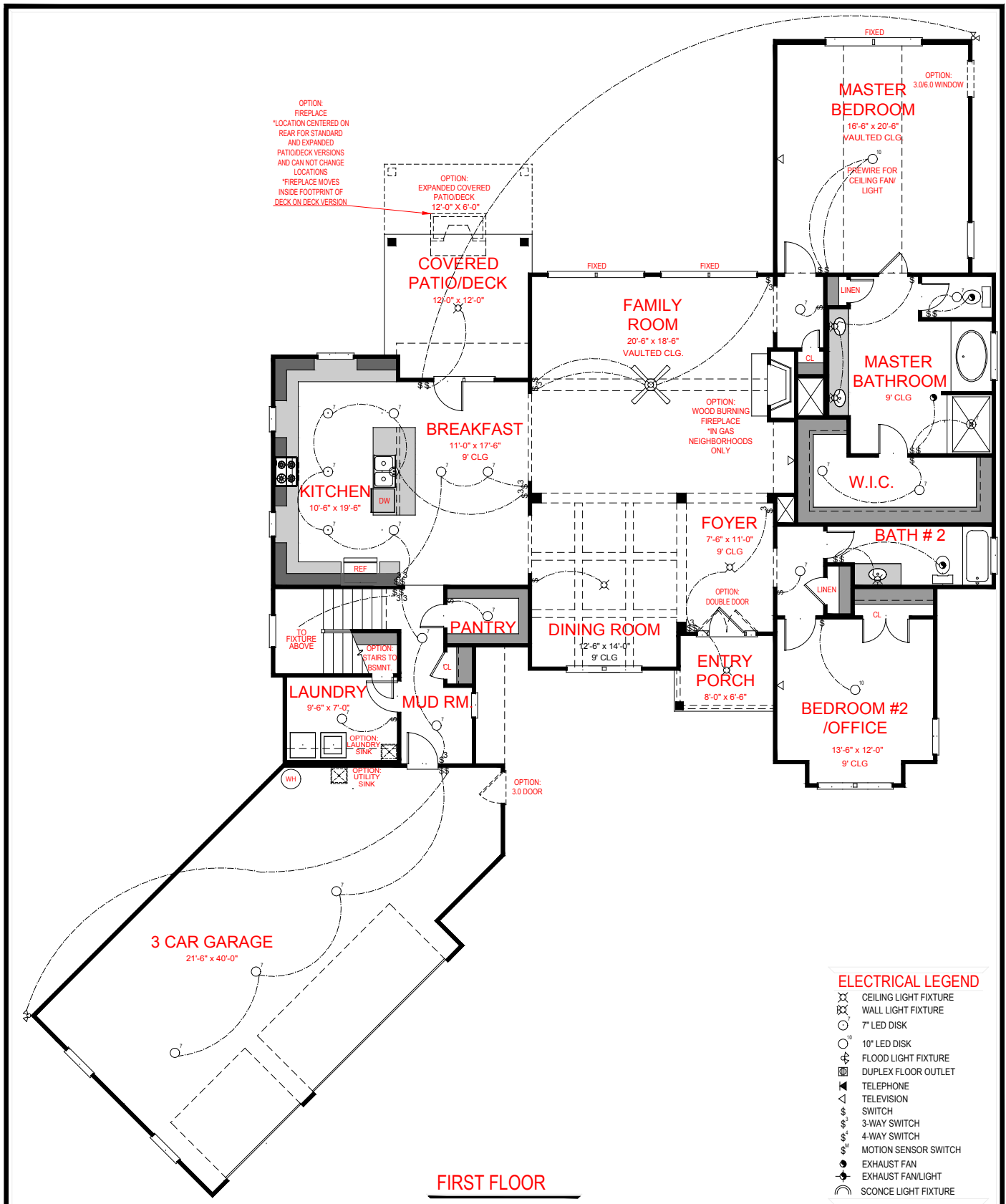
45° VERSION



\*THE DRAWING(S) ON THIS PAGE ARE A GRAPHICAL REPRESENTATION ONLY. PLEASE CONSULT YOUR AGENT FOR SPECIFIC INFORMATION REGARDING THIS FLOOR PLAN. THE DESIGN OF THE FLOOR PLAN REPRESENTED IS SUBJECT TO CHANGE WITHOUT NOTICE.

**SQUARE FOOTAGE:**

FIRST FLOOR:	2,470 SQ. FT.
SECOND FLOOR:	1,740 SQ. FT.
<b>TOTAL:</b>	<b>4,210 SQ. FT.</b>



OPTION:  
FIREPLACE  
\*LOCATION CENTERED ON  
REAR FOR STANDARD  
AND EXPANDED  
PATIO/DECK VERSIONS  
AND CAN NOT CHANGE  
LOCATIONS  
\*FIREPLACE MOVES  
INSIDE FOOTPRINT OF  
DECK ON DECK VERSION

OPTION:  
EXPANDED COVERED  
PATIO/DECK  
12'-0" X 6'-0"

OPTION:  
3.0/6.0 WINDOW

MASTER  
BEDROOM  
16'-6" x 20'-6"  
VAULTED CLG.

PREWIRE FOR  
CEILING FAN  
LIGHT

COVERED  
PATIO/DECK  
12'-0" x 12'-0"

FAMILY  
ROOM  
20'-6" x 18'-6"  
VAULTED CLG.

MASTER  
BATHROOM  
9' CLG

BREAKFAST  
11'-0" x 17'-6"  
9' CLG

OPTION:  
WOOD BURNING  
FIREPLACE  
\*IN GAS  
NEIGHBORHOODS  
ONLY

KITCHEN  
10'-6" x 19'-6"  
DW

W.I.C.

FOYER  
7'-6" x 11'-0"  
9' CLG

BATH # 2

TO FIXTURE  
ABOVE

PANTRY

DINING ROOM  
12'-6" x 14'-0"  
9' CLG

ENTRY  
PORCH  
8'-0" x 6'-6"

BEDROOM #2  
/OFFICE  
13'-6" x 12'-0"  
9' CLG

LAUNDRY  
9'-6" x 7'-0"

MUD RM

OPTION:  
LAUNDRY  
SINK

OPTION:  
3.0 DOOR

3 CAR GARAGE  
21'-6" x 40'-0"

FIRST FLOOR

ELECTRICAL LEGEND

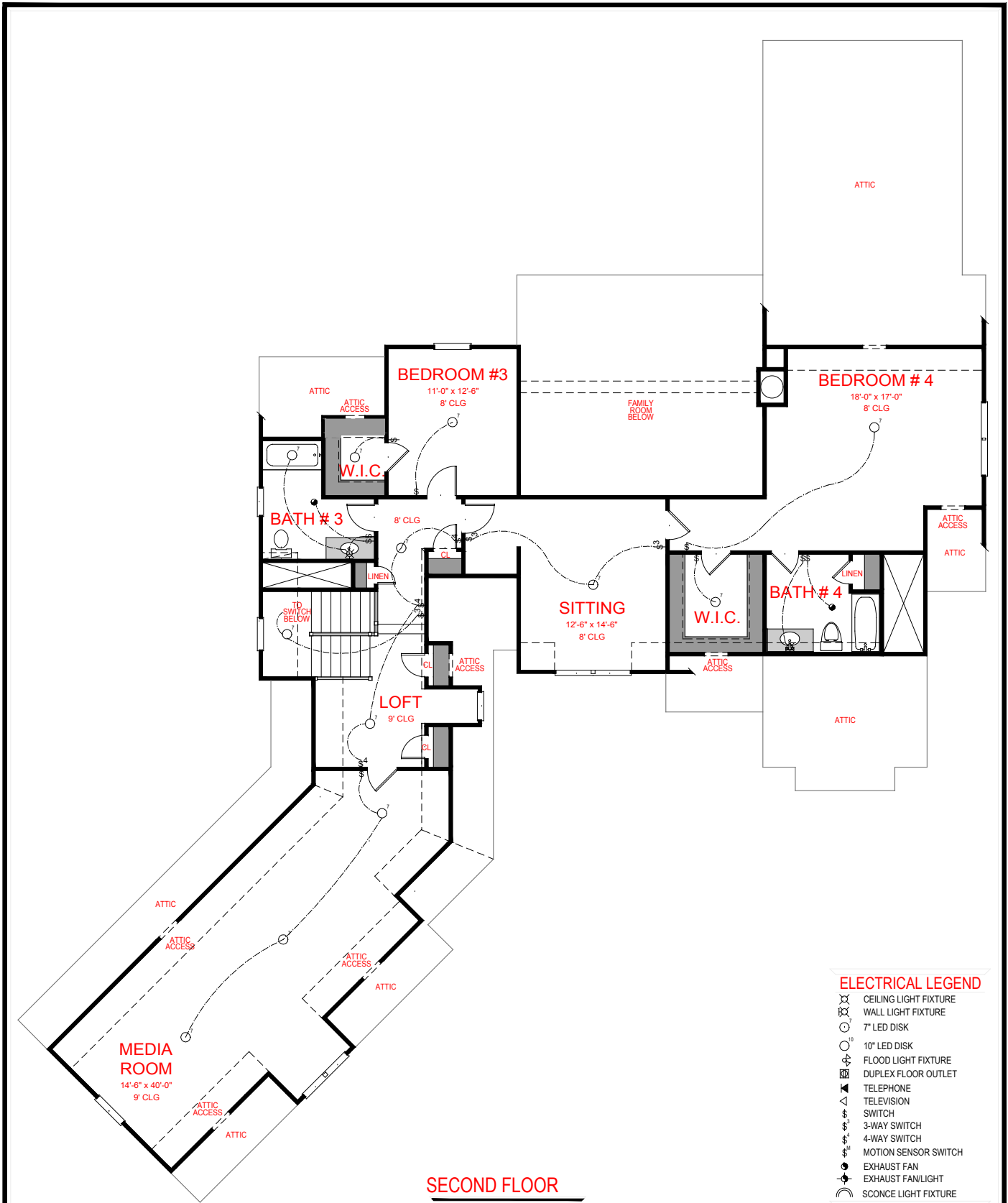
- ⊗ CEILING LIGHT FIXTURE
- ⊗ WALL LIGHT FIXTURE
- 7" LED DISK
- 10" LED DISK
- ⊕ FLOOD LIGHT FIXTURE
- ⊕ DUPLEX FLOOR OUTLET
- ☎ TELEPHONE
- △ TELEVISION
- ⊞ SWITCH
- ⊞ 3-WAY SWITCH
- ⊞ 4-WAY SWITCH
- ⊞ MOTION SENSOR SWITCH
- ⊞ EXHAUST FAN
- ⊞ EXHAUST FAN/LIGHT
- ⊞ SCONCE LIGHT FIXTURE

**BELMONT**  
45° VERSION



\*THE DRAWING(S) ON THIS PAGE ARE A GRAPHICAL REPRESENTATION ONLY. PLEASE CONSULT YOUR AGENT FOR SPECIFIC INFORMATION REGARDING THIS FLOOR PLAN. THE DESIGN OF THE FLOOR PLAN REPRESENTED IS SUBJECT TO CHANGE WITHOUT NOTICE.

SQUARE FOOTAGE:  
FIRST FLOOR: 2,470 SQ. FT.  
SECOND FLOOR: 1,740 SQ. FT.  
TOTAL: 4,210 SQ. FT.



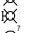

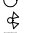

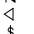
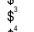
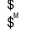





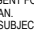


**SECOND FLOOR**

**BELMONT**

45° VERSION



**ELECTRICAL LEGEND**

-  CEILING LIGHT FIXTURE
-  WALL LIGHT FIXTURE
-  7" LED DISK
-  10" LED DISK
-  FLOOD LIGHT FIXTURE
-  DUPLEX FLOOR OUTLET
-  TELEPHONE
-  TELEVISION
-  SWITCH
-  3-WAY SWITCH
-  4-WAY SWITCH
-  MOTION SENSOR SWITCH
-  EXHAUST FAN
-  EXHAUST FAN/LIGHT
-  SCONCE LIGHT FIXTURE

**SQUARE FOOTAGE:**

FIRST FLOOR:	2,470 SQ. FT.
SECOND FLOOR:	1,740 SQ. FT.
<b>TOTAL:</b>	<b>4,210 SQ. FT.</b>

\*THE DRAWING(S) ON THIS PAGE ARE A GRAPHICAL REPRESENTATION ONLY. PLEASE CONSULT YOUR AGENT FOR SPECIFIC INFORMATION REGARDING THIS FLOOR PLAN. THE DESIGN OF THE FLOOR PLAN REPRESENTED IS SUBJECT TO CHANGE WITHOUT NOTICE.