

FRONT ELEVATION - B VERSION

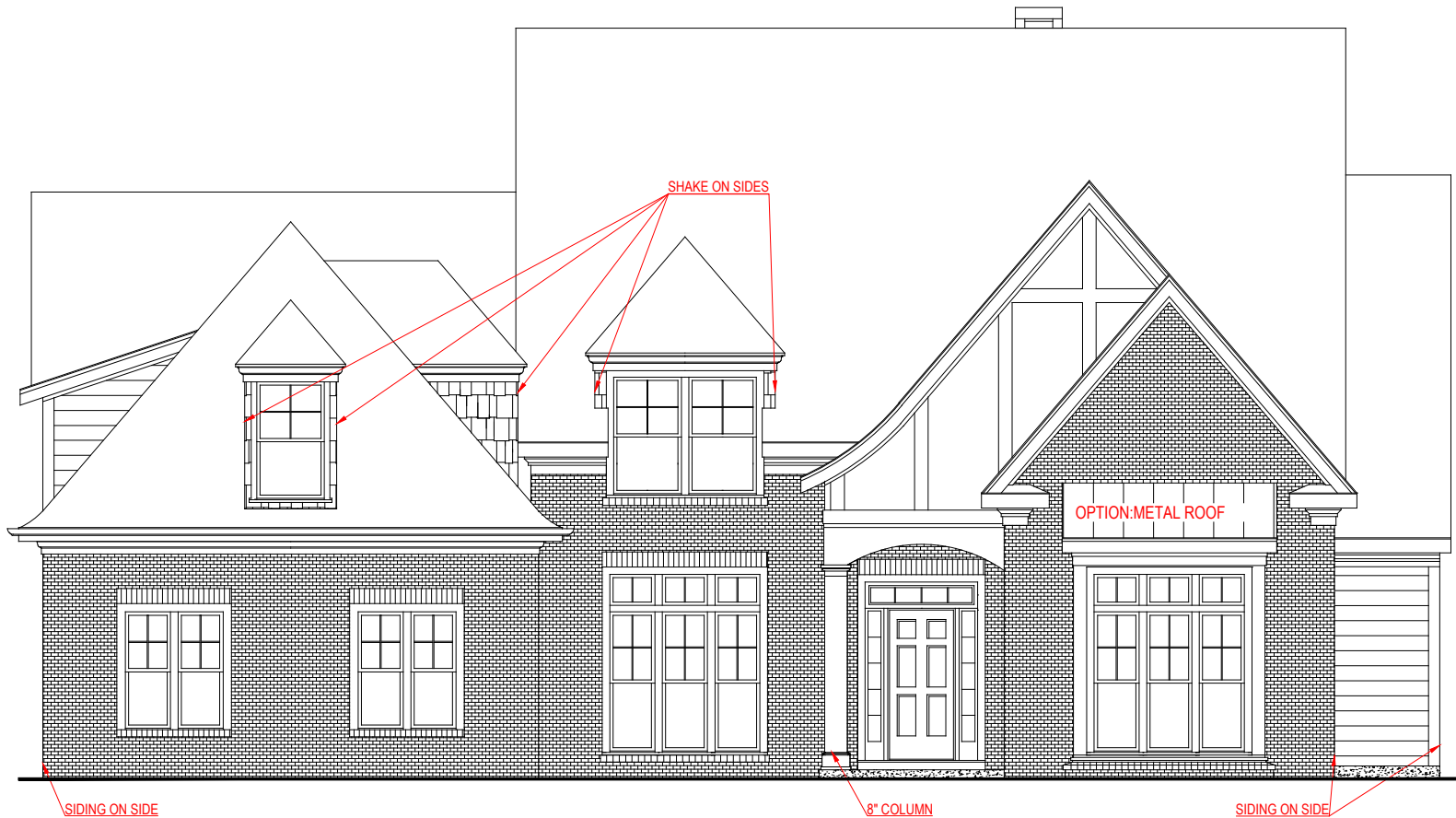
BELMONT

90° VERSION



*THE DRAWING(S) ON THIS PAGE ARE A GRAPHICAL REPRESENTATION ONLY. PLEASE CONSULT YOUR AGENT FOR SPECIFIC INFORMATION REGARDING THIS FLOOR PLAN. THE DESIGN OF THE FLOOR PLAN REPRESENTED IS SUBJECT TO CHANGE WITHOUT NOTICE.

SQUARE FOOTAGE:	
FIRST FLOOR:	2,470 SQ. FT.
SECOND FLOOR:	1,740 SQ. FT.
TOTAL:	4,210 SQ. FT.



FRONT ELEVATION - D VERSION

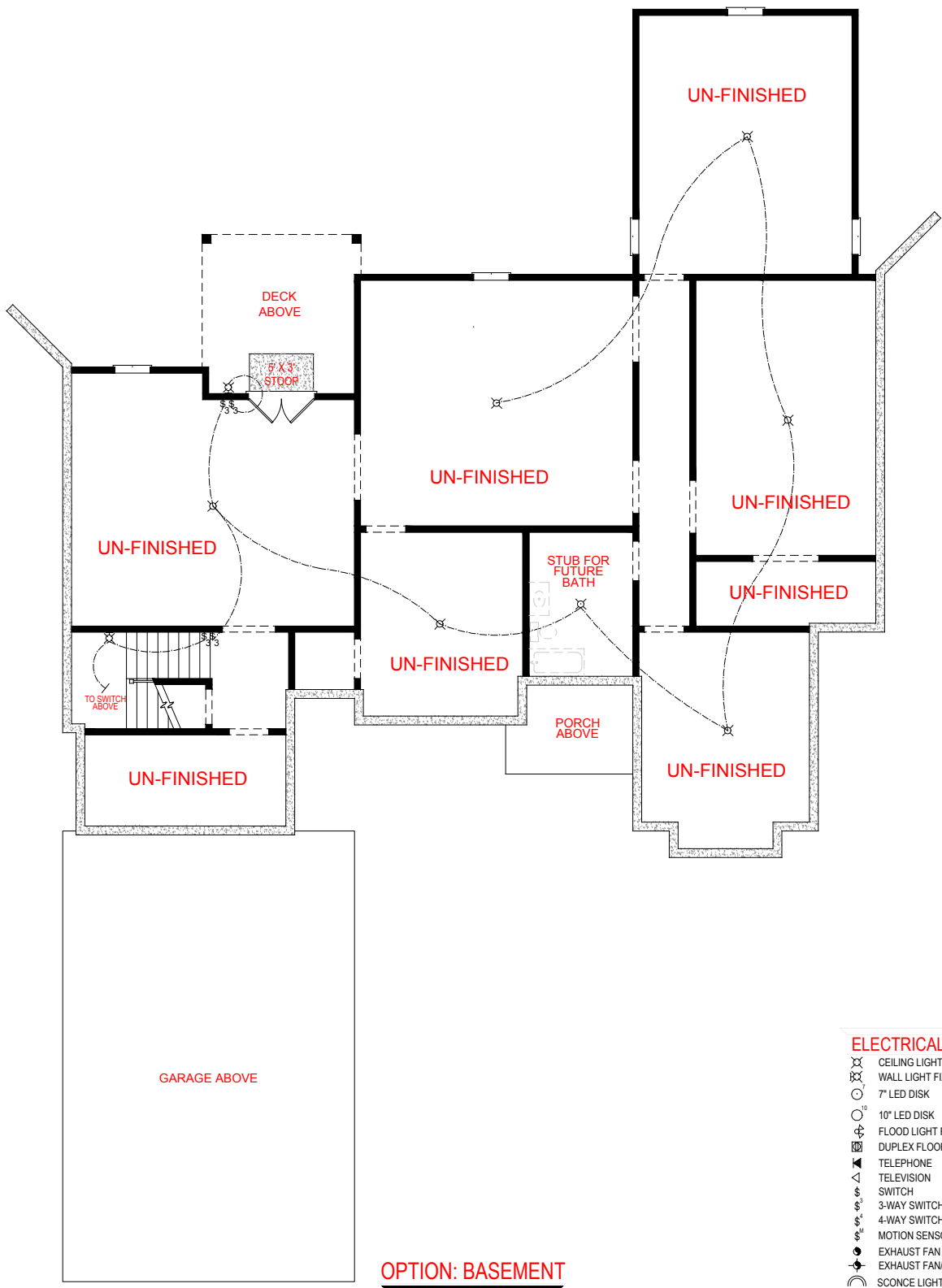
BELMONT

90° VERSION



*THE DRAWING(S) ON THIS PAGE ARE A GRAPHICAL REPRESENTATION ONLY. PLEASE CONSULT YOUR AGENT FOR SPECIFIC INFORMATION REGARDING THIS FLOOR PLAN. THE DESIGN OF THE FLOOR PLAN REPRESENTED IS SUBJECT TO CHANGE WITHOUT NOTICE.

SQUARE FOOTAGE:	
FIRST FLOOR:	2,470 SQ. FT.
SECOND FLOOR:	1,740 SQ. FT.
TOTAL:	4,210 SQ. FT.



OPTION: BASEMENT

ELECTRICAL LEGEND

- ⊗ CEILING LIGHT FIXTURE
- ⊗ WALL LIGHT FIXTURE
- 7" LED DISK
- 10" LED DISK
- ⊕ FLOOD LIGHT FIXTURE
- ⊕ DUPLEX FLOOR OUTLET
- ☎ TELEPHONE
- △ TELEVISION
- ⊞ SWITCH
- ⊞ 3-WAY SWITCH
- ⊞ 4-WAY SWITCH
- ⊞ MOTION SENSOR SWITCH
- ⊞ EXHAUST FAN
- ⊞ EXHAUST FAN/LIGHT
- ☾ SCONCE LIGHT FIXTURE

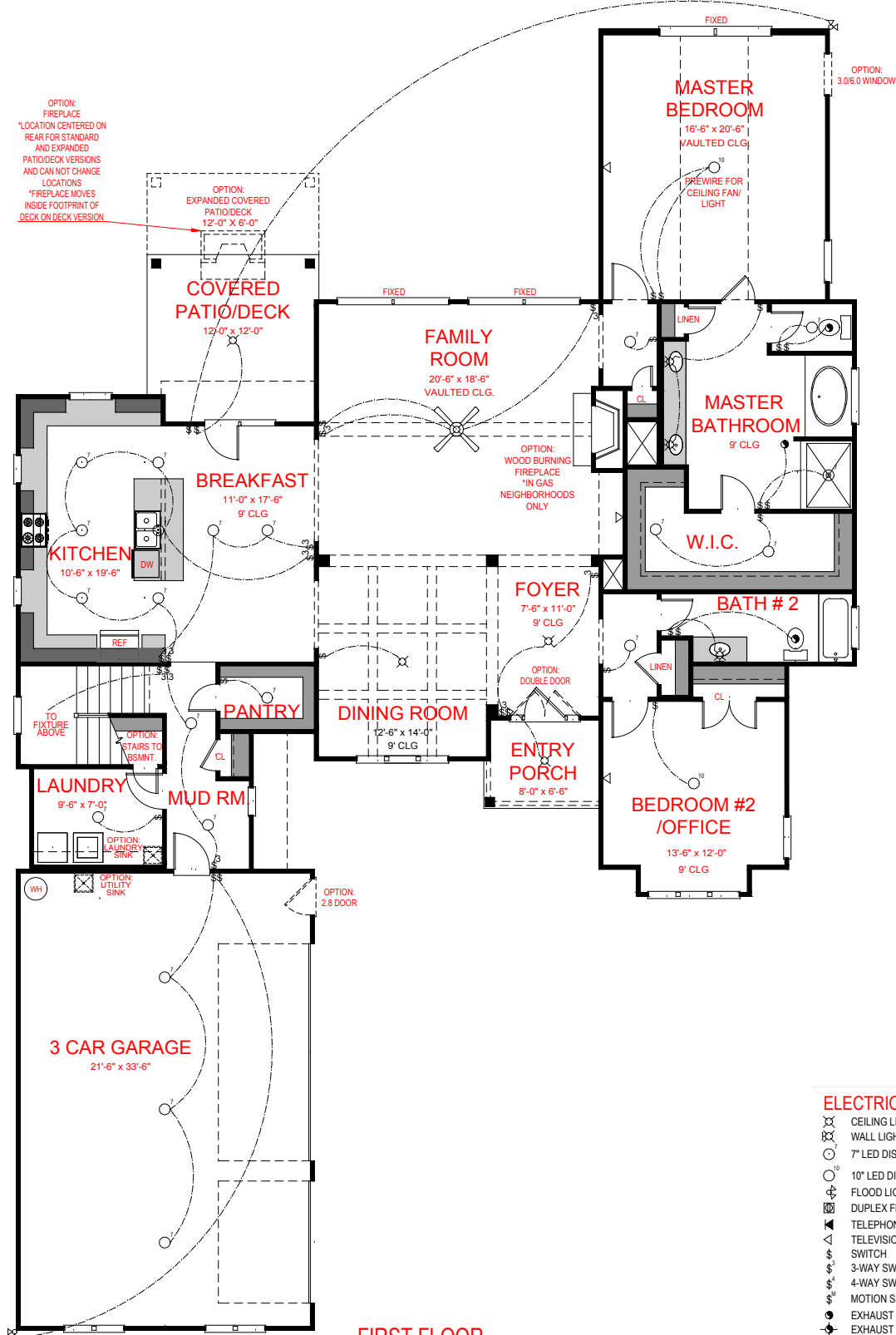
BELMONT
90° VERSION



*THE DRAWING(S) ON THIS PAGE ARE A GRAPHICAL REPRESENTATION ONLY. PLEASE CONSULT YOUR AGENT FOR SPECIFIC INFORMATION REGARDING THIS FLOOR PLAN. THE DESIGN OF THE FLOOR PLAN REPRESENTED IS SUBJECT TO CHANGE WITHOUT NOTICE.

SQUARE FOOTAGE:

FIRST FLOOR:	2,470 SQ. FT.
SECOND FLOOR:	1,740 SQ. FT.
TOTAL:	4,210 SQ. FT.



OPTION:
FIREPLACE
*LOCATION CENTERED ON
REAR FOR STANDARD
AND EXPANDED
PATIO/DECK VERSIONS
AND CAN NOT CHANGE
LOCATIONS
*FIREPLACE MOVES
INSIDE FOOTPRINT OF
DECK ON DECK VERSION

OPTION:
EXPANDED COVERED
PATIO/DECK
12'-0" X 6'-0"

OPTION:
3.06.0 WINDOW

FIRST FLOOR

ELECTRICAL LEGEND

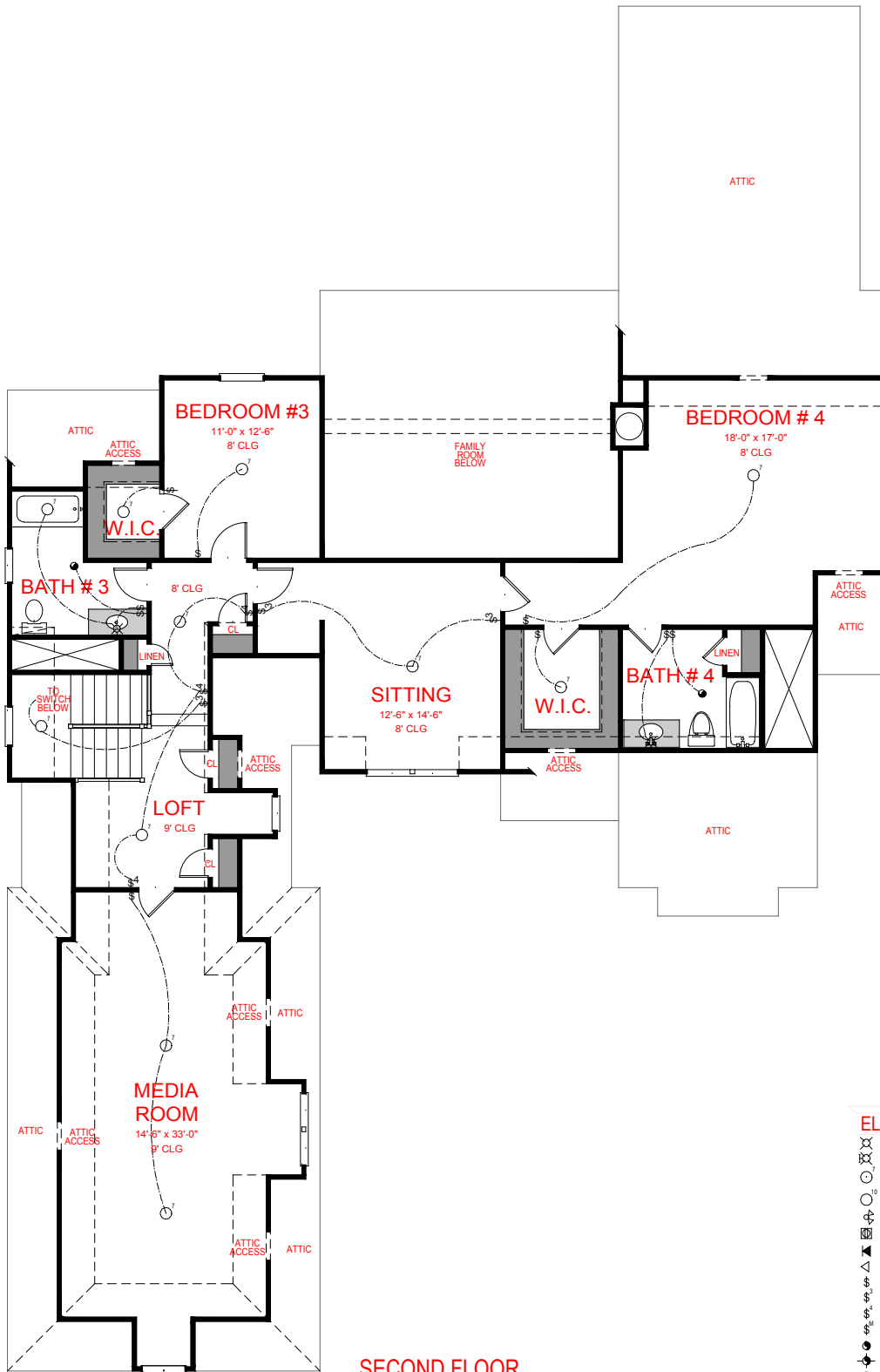
- ⊗ CEILING LIGHT FIXTURE
- ⊗ WALL LIGHT FIXTURE
- 7" LED DISK
- 10" LED DISK
- ⊕ FLOOD LIGHT FIXTURE
- ⊕ DUPLEX FLOOR OUTLET
- ☎ TELEPHONE
- △ TELEVISION
- ⊞ SWITCH
- ⊞ 3-WAY SWITCH
- ⊞ 4-WAY SWITCH
- ⊞ MOTION SENSOR SWITCH
- ⊞ EXHAUST FAN
- ⊞ EXHAUST FAN/LIGHT
- ⊞ SCONCE LIGHT FIXTURE

BELMONT
90° VERSION



SQUARE FOOTAGE:
FIRST FLOOR: 2,470 SQ. FT.
SECOND FLOOR: 1,740 SQ. FT.
TOTAL: 4,210 SQ. FT.

*THE DRAWING(S) ON THIS PAGE ARE A GRAPHICAL REPRESENTATION ONLY. PLEASE CONSULT YOUR AGENT FOR SPECIFIC INFORMATION REGARDING THIS FLOOR PLAN. THE DESIGN OF THE FLOOR PLAN REPRESENTED IS SUBJECT TO CHANGE WITHOUT NOTICE.



SECOND FLOOR

ELECTRICAL LEGEND

- CEILING LIGHT FIXTURE
- WALL LIGHT FIXTURE
- 7" LED DISK
- 10" LED DISK
- FLOOD LIGHT FIXTURE
- DUPLEX FLOOR OUTLET
- TELEPHONE
- TELEVISION
- SWITCH
- 3-WAY SWITCH
- 4-WAY SWITCH
- MOTION SENSOR SWITCH
- EXHAUST FAN
- EXHAUST FAN/LIGHT
- SCONCE LIGHT FIXTURE

BELMONT
90° VERSION

JEFF LINDSEY COMMUNITIES
Live your dream.

*THE DRAWING(S) ON THIS PAGE ARE A GRAPHICAL REPRESENTATION ONLY. PLEASE CONSULT YOUR AGENT FOR SPECIFIC INFORMATION REGARDING THIS FLOOR PLAN. THE DESIGN OF THE FLOOR PLAN REPRESENTED IS SUBJECT TO CHANGE WITHOUT NOTICE.

SQUARE FOOTAGE:

FIRST FLOOR:	2,470 SQ. FT.
SECOND FLOOR:	1,740 SQ. FT.
TOTAL:	4,210 SQ. FT.