

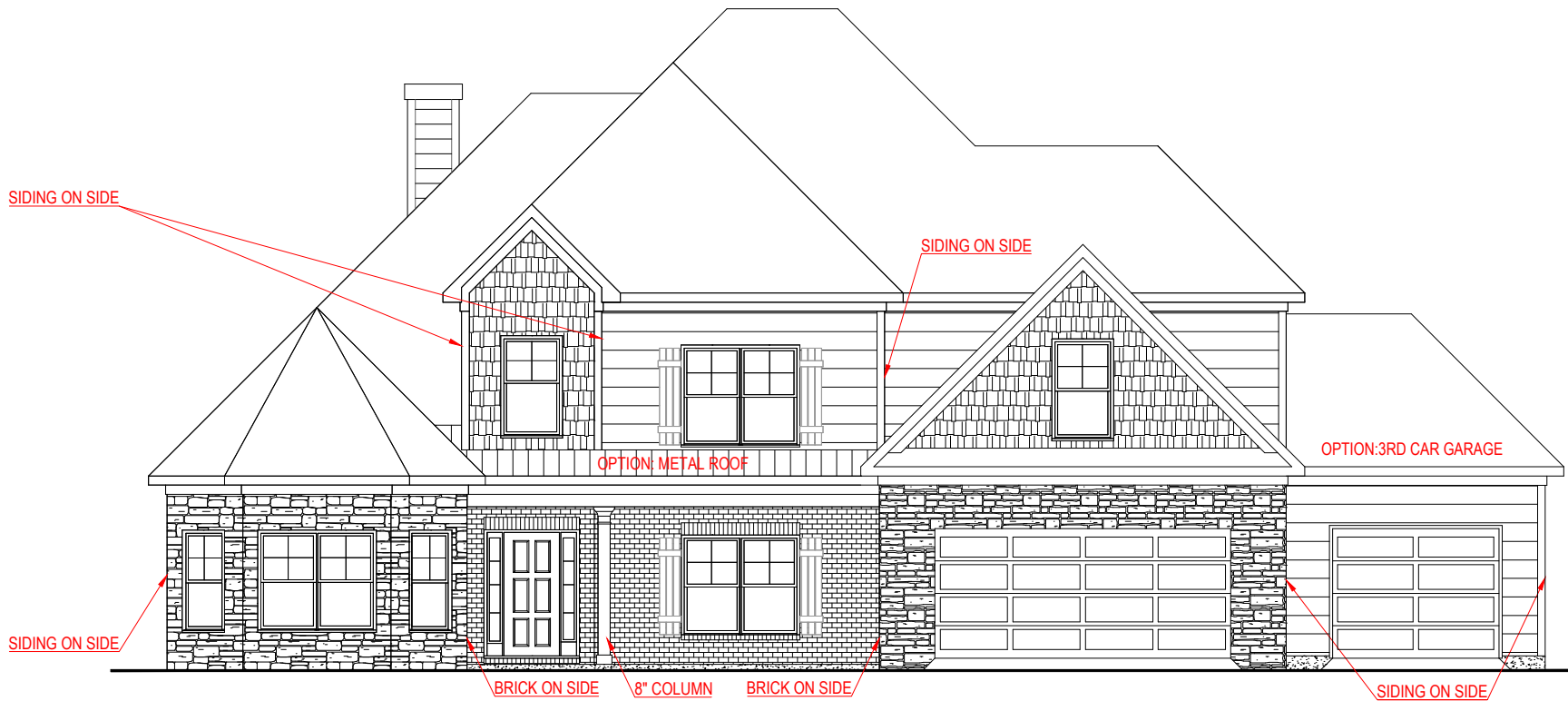
FRONT ELEVATION - B VERSION

WOODBURY
FRONT ENTRY VERSION

JEFF LINDSEY COMMUNITIES
Live your dream.

*THE DRAWING(S) ON THIS PAGE ARE A GRAPHICAL REPRESENTATION ONLY. PLEASE CONSULT YOUR AGENT FOR SPECIFIC INFORMATION REGARDING THIS FLOOR PLAN. THE DESIGN OF THE FLOOR PLAN REPRESENTED IS SUBJECT TO CHANGE WITHOUT NOTICE.

SQUARE FOOTAGE:	
FIRST FLOOR:	3,023 SQ. FT.
SECOND FLOOR:	688 SQ. FT.
TOTAL:	3,711 SQ. FT.



FRONT ELEVATION - D VERSION

WOODBURY
FRONT ENTRY VERSION



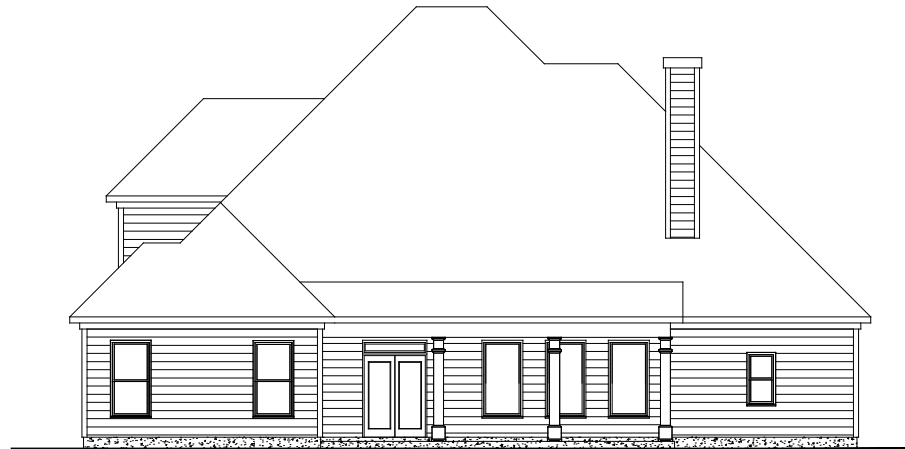
SQUARE FOOTAGE:

FIRST FLOOR:	3,023 SQ. FT.
SECOND FLOOR:	688 SQ. FT.
TOTAL:	3,711 SQ. FT.

*THE DRAWING(S) ON THIS PAGE ARE A GRAPHICAL REPRESENTATION ONLY. PLEASE CONSULT YOUR AGENT FOR SPECIFIC INFORMATION REGARDING THIS FLOOR PLAN. THE DESIGN OF THE FLOOR PLAN REPRESENTED IS SUBJECT TO CHANGE WITHOUT NOTICE.



REAR ELEVATION - STANDARD PATIO



REAR ELEVATION - EXPANDED PATIO OPTION

WOODBURY

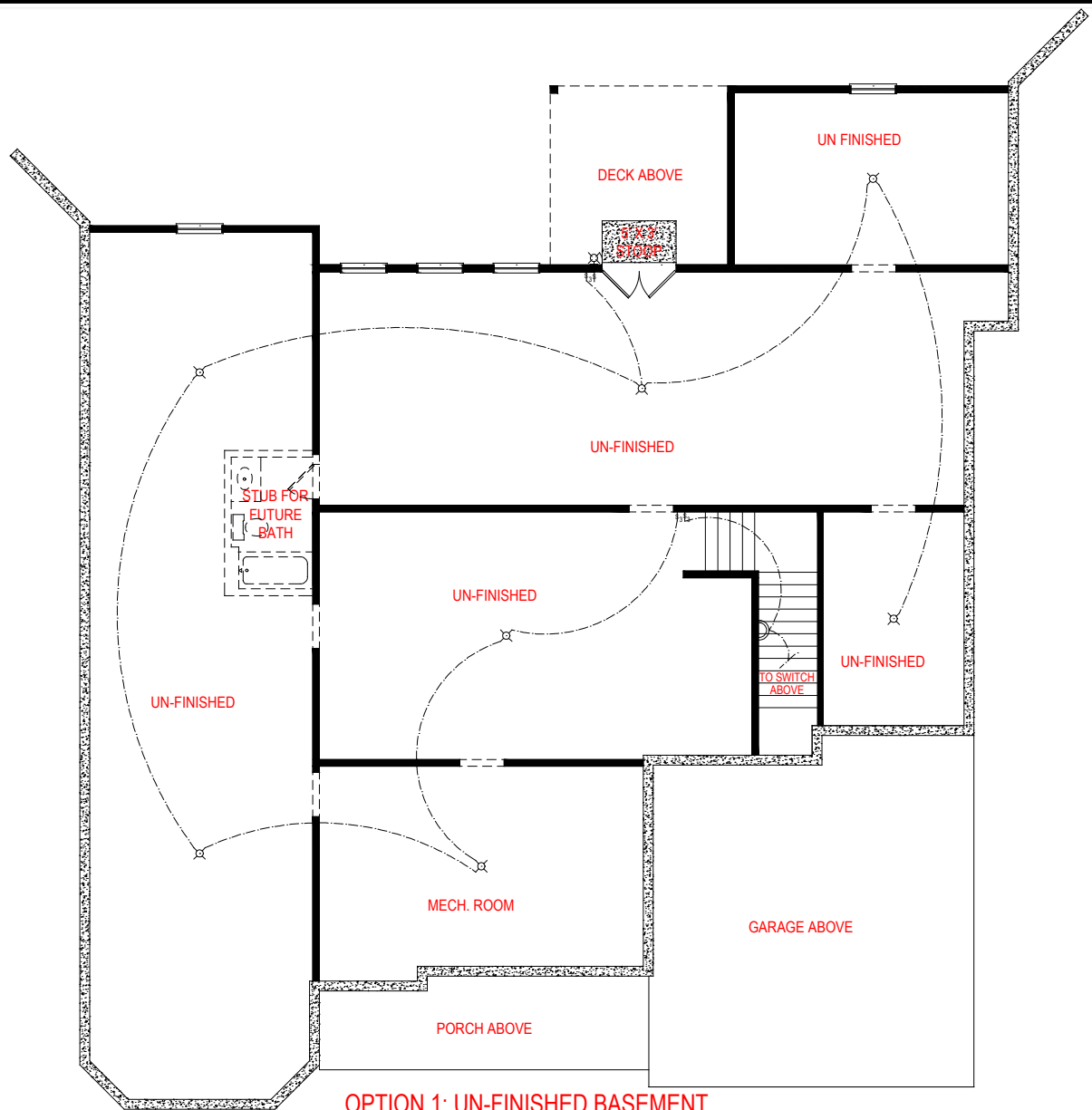
FRONT ENTRY VERSION



*THE DRAWING(S) ON THIS PAGE ARE A GRAPHICAL REPRESENTATION ONLY. PLEASE CONSULT YOUR AGENT FOR SPECIFIC INFORMATION REGARDING THIS FLOOR PLAN. THE DESIGN OF THE FLOOR PLAN REPRESENTED IS SUBJECT TO CHANGE WITHOUT NOTICE.

SQUARE FOOTAGE:

FIRST FLOOR: 3,023 SQ. FT.
 SECOND FLOOR: 688 SQ. FT.
 TOTAL: 3,711 SQ. FT.



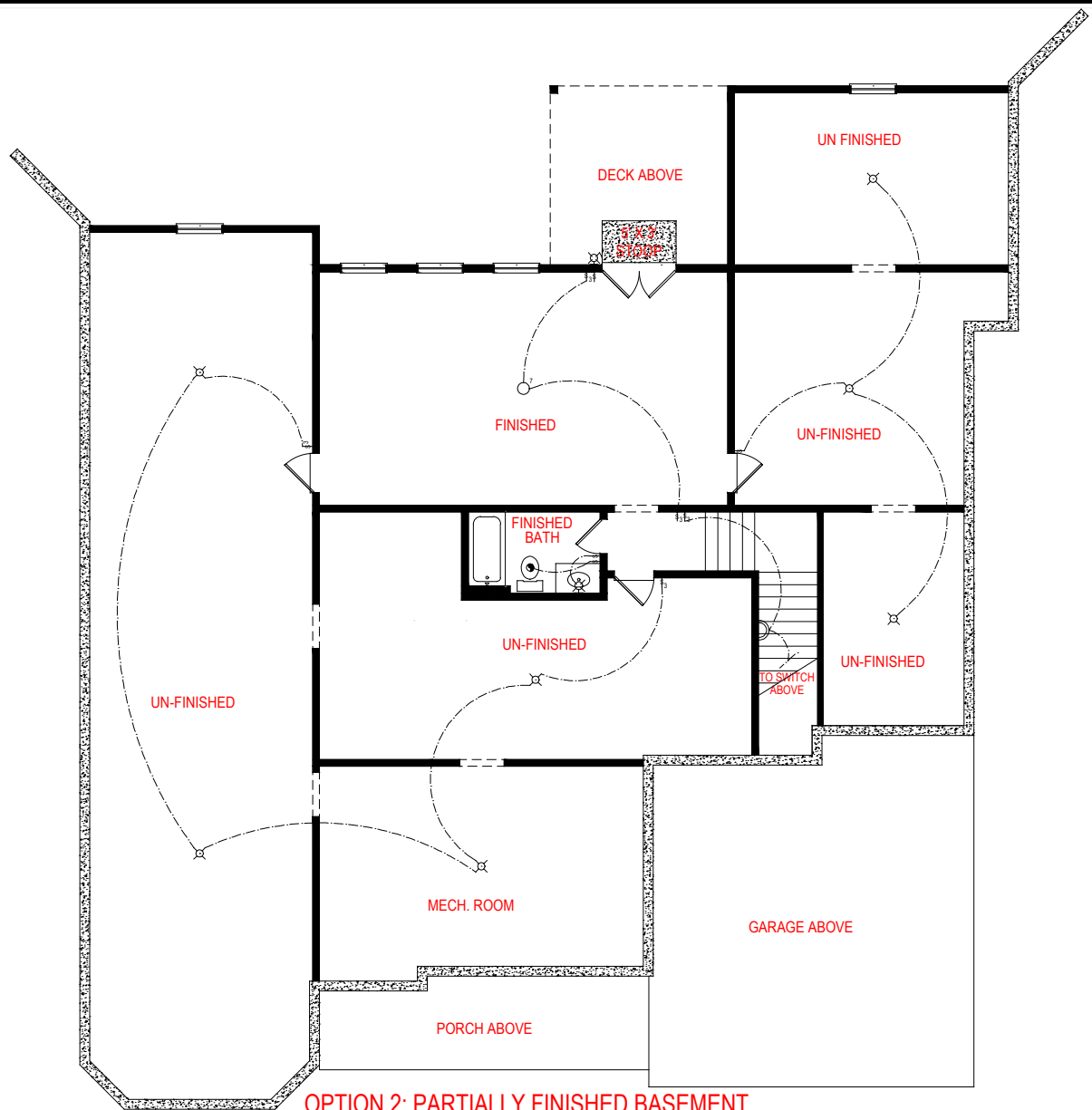
OPTION 1: UN-FINISHED BASEMENT

WOODBURY
FRONT ENTRY VERSION



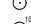

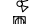

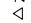
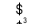
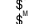







SQUARE FOOTAGE:	
FIRST FLOOR:	3,023 SQ. FT.
SECOND FLOOR:	688 SQ. FT.
TOTAL:	3,711 SQ. FT.

*THE DRAWING(S) ON THIS PAGE ARE A GRAPHICAL REPRESENTATION ONLY. PLEASE CONSULT YOUR AGENT FOR SPECIFIC INFORMATION REGARDING THIS FLOOR PLAN. THE DESIGN OF THE FLOOR PLAN REPRESENTED IS SUBJECT TO CHANGE WITHOUT NOTICE.



OPTION 2: PARTIALLY FINISHED BASEMENT
529 SQ.FT.

- ELECTRICAL LEGEND**
-  CEILING LIGHT FIXTURE
 -  WALL LIGHT FIXTURE
 -  7" LED DISK
 -  10" LED DISK
 -  FLOOD LIGHT FIXTURE
 -  DUPLEX FLOOR OUTLET
 -  TELEPHONE
 -  TELEVISION
 -  SWITCH
 -  3-WAY SWITCH
 -  MOTION SENSOR SWITCH
 -  EXHAUST FAN
 -  EXHAUST FAN/LIGHT
 -  SCONCE LIGHT FIXTURE

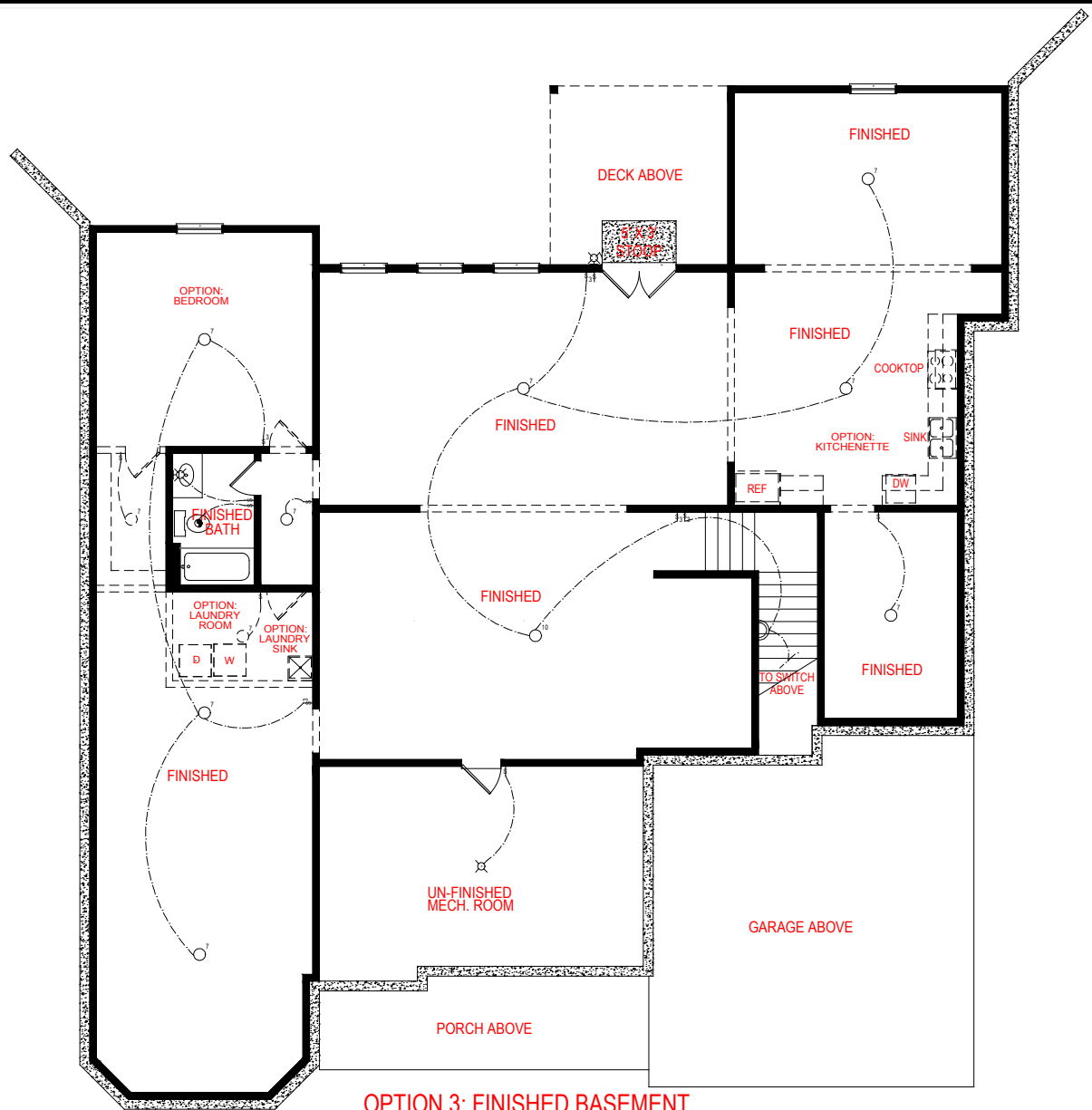
SQUARE FOOTAGE:

FIRST FLOOR:	3,023 SQ. FT.
SECOND FLOOR:	688 SQ. FT.
TOTAL:	3,711 SQ. FT.

WOODBURY
FRONT ENTRY VERSION



*THE DRAWING(S) ON THIS PAGE ARE A GRAPHICAL REPRESENTATION ONLY. PLEASE CONSULT YOUR AGENT FOR SPECIFIC INFORMATION REGARDING THIS FLOOR PLAN. THE DESIGN OF THE FLOOR PLAN REPRESENTED IS SUBJECT TO CHANGE WITHOUT NOTICE.



OPTION 3: FINISHED BASEMENT
2,506 SQ.FT.

- ELECTRICAL LEGEND**
- CEILING LIGHT FIXTURE
 - WALL LIGHT FIXTURE
 - 7" LED DISK
 - 10" LED DISK
 - FLOOD LIGHT FIXTURE
 - DUPLEX FLOOR OUTLET
 - TELEPHONE
 - TELEVISION
 - SWITCH
 - 3-WAY SWITCH
 - MOTION SENSOR SWITCH
 - EXHAUST FAN
 - EXHAUST FAN/LIGHT
 - SCONCE LIGHT FIXTURE

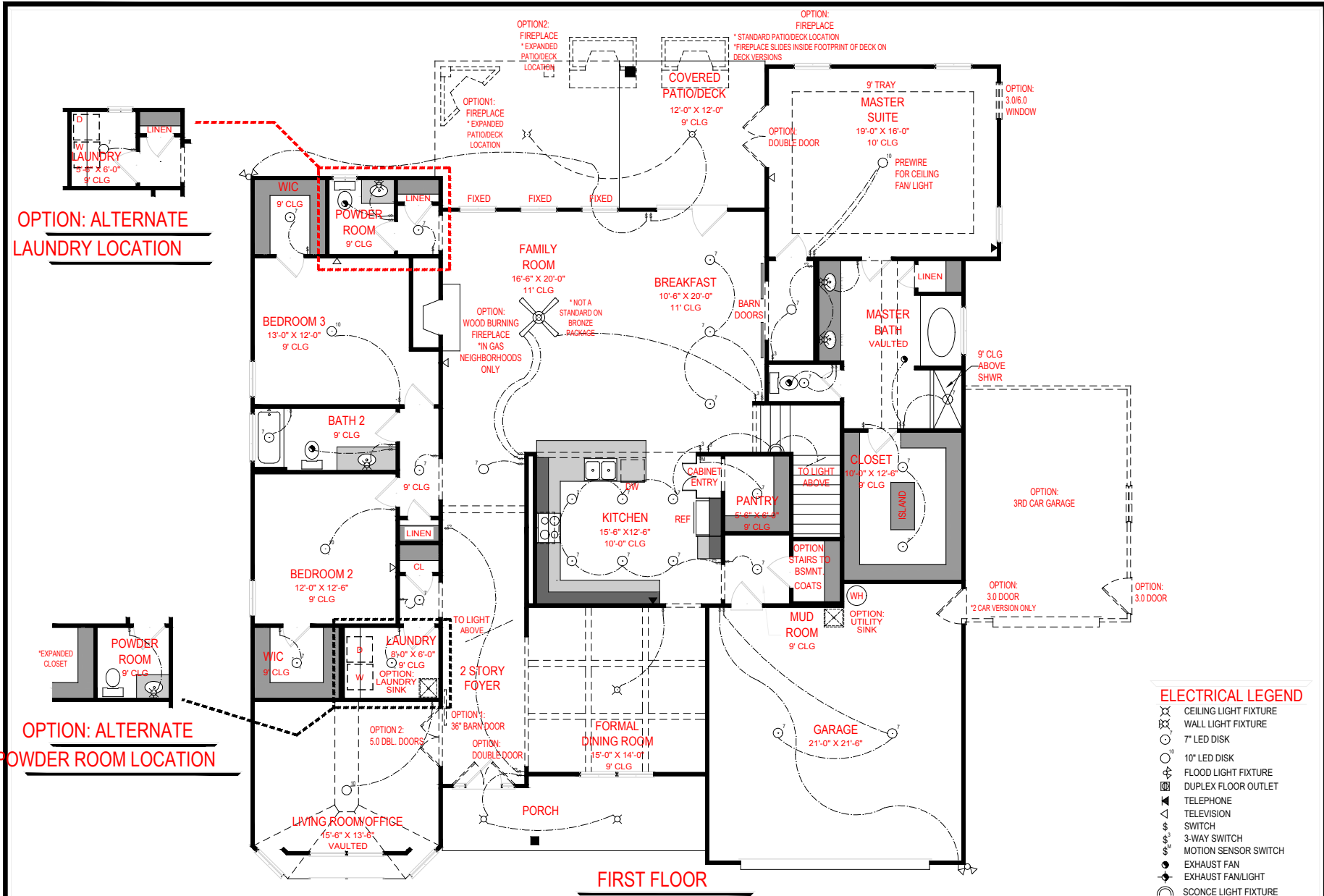
SQUARE FOOTAGE:

FIRST FLOOR:	3,023 SQ. FT.
SECOND FLOOR:	688 SQ. FT.
TOTAL:	3,711 SQ. FT.

WOODBURY
FRONT ENTRY VERSION



*THE DRAWING(S) ON THIS PAGE ARE A GRAPHICAL REPRESENTATION ONLY. PLEASE CONSULT YOUR AGENT FOR SPECIFIC INFORMATION REGARDING THIS FLOOR PLAN. THE DESIGN OF THE FLOOR PLAN REPRESENTED IS SUBJECT TO CHANGE WITHOUT NOTICE.



OPTION: ALTERNATE LAUNDRY LOCATION

OPTION: ALTERNATE POWDER ROOM LOCATION

ELECTRICAL LEGEND

- CEILING LIGHT FIXTURE
- WALL LIGHT FIXTURE
- 7" LED DISK
- 10" LED DISK
- FLOOD LIGHT FIXTURE
- DUPLEX FLOOR OUTLET
- TELEPHONE
- TELEVISION
- SWITCH
- 3-WAY SWITCH
- MOTION SENSOR SWITCH
- EXHAUST FAN
- EXHAUST FAN/LIGHT
- SCONCE LIGHT FIXTURE

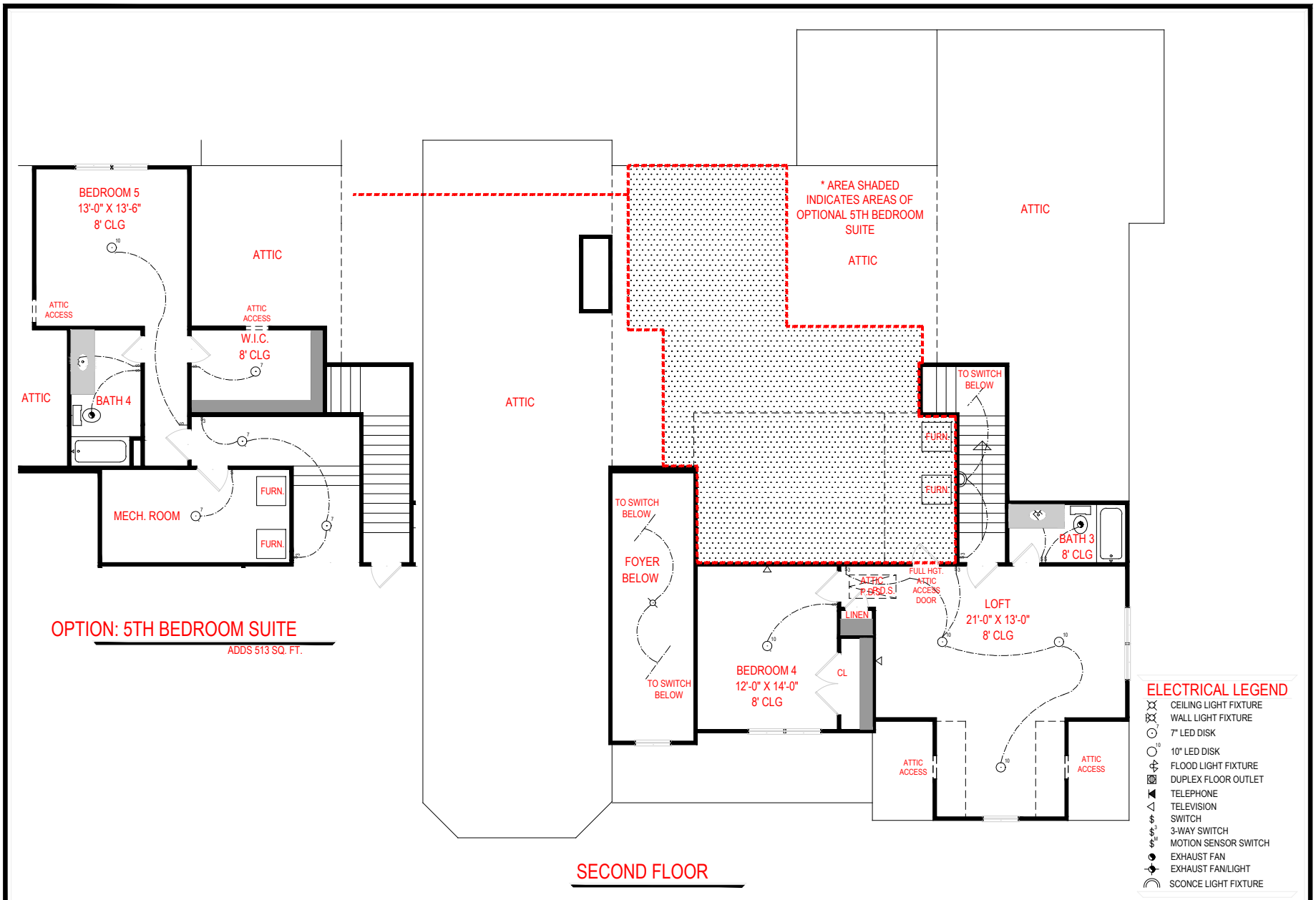
SQUARE FOOTAGE:

FIRST FLOOR: 3,023 SQ. FT.
 SECOND FLOOR: 688 SQ. FT.
 TOTAL: 3,711 SQ. FT.

WOODBURY
 FRONT ENTRY VERSION



*THE DRAWING(S) ON THIS PAGE ARE A GRAPHICAL REPRESENTATION ONLY. PLEASE CONSULT YOUR AGENT FOR SPECIFIC INFORMATION REGARDING THIS FLOOR PLAN. THE DESIGN OF THE FLOOR PLAN REPRESENTED IS SUBJECT TO CHANGE WITHOUT NOTICE.



OPTION: 5TH BEDROOM SUITE
 ADDS 513 SQ. FT.

SECOND FLOOR

- ELECTRICAL LEGEND**
- CEILING LIGHT FIXTURE
 - WALL LIGHT FIXTURE
 - 7" LED DISK
 - 10" LED DISK
 - FLOOD LIGHT FIXTURE
 - DUPLEX FLOOR OUTLET
 - TELEPHONE
 - TELEVISION
 - SWITCH
 - 3-WAY SWITCH
 - MOTION SENSOR SWITCH
 - EXHAUST FAN
 - EXHAUST FAN/LIGHT
 - SCONCE LIGHT FIXTURE

SQUARE FOOTAGE:

FIRST FLOOR:	3,023 SQ. FT.
SECOND FLOOR:	688 SQ. FT.
TOTAL:	3,711 SQ. FT.

WOODBURY
 FRONT ENTRY VERSION



*THE DRAWING(S) ON THIS PAGE ARE A GRAPHICAL REPRESENTATION ONLY. PLEASE CONSULT YOUR AGENT FOR SPECIFIC INFORMATION REGARDING THIS FLOOR PLAN. THE DESIGN OF THE FLOOR PLAN REPRESENTED IS SUBJECT TO CHANGE WITHOUT NOTICE.