



COWETA COUNTY, GEORGIA

ARBOR SPRINGS

FROM THE

800's

SALES CENTER

Arbor Springs N Drive
Newnan, Georgia

HOURS OF OPERATION

Please contact us to make an appointment!

DIRECTIONS

From Sharpsburg, take Sharpsburg McCullum Road for 8 miles and turn right onto US-29. In 1.6 miles, turn left onto Arbor Springs North Drive.

Selling now in Newnan, Georgia! Nestled within the established community of Arbor Springs, our newest development offers six exclusive 1-3 acre lots. Located in the highly-regarded Northgate High School district, this development combines the charm of a mature neighborhood with the excitement of new home construction. Contact us today to learn more about your new home in Newnan, Georgia!

Jeff Lindsey Communities offers 3% compensation to the selling broker. Please contact us with any questions you may have!

LEELLEN DEVRIES

678-849-5865

leellen.devries@jefflindseycommunities.com



Marketed By: Lindsey Marketing Group Offered By: Jeff Lindsey Communities



Equal Housing Opportunity. All information is believed to be accurate, but is not guaranteed and is therefore subject to errors and changes without notice.

THE IDEAL **PLAN** FOR YOU AND YOUR FAMILY



BENSON B XL

Base Price: **\$799,900**
2,977 sqft 4 Beds 3 Baths



BRYANT B 90

Base Price: **\$898,500**
3,635 sqft 4 Beds 4 Baths



GREYWELL B

Base Price: **\$887,500**
3,662 sqft 5 Beds 4 Baths



HARPER B

Base Price: **\$897,800**
3,832 sqft 5 Beds 4 Baths



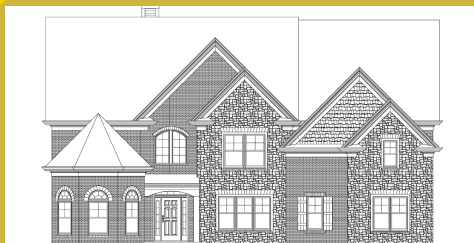
HARRIS B

Base Price: **\$797,900**
2,948 sqft 4 Beds 3 Baths



JACKSON B

Base Price: **\$986,700**
5,252 sqft 5 Beds 5.5 Baths



JORDAN B-D

Base Price: **\$980,900**
5,371 sqft 5 Beds 5.5 Baths



MILLWOOD B

Base Price: **\$845,900**
3,454 sqft 5 Beds 4 Baths



MURPHY B

Base Price: **\$855,700**
3,687 sqft 5 Beds 3.5 Baths



PALMER B

Base Price: **\$837,500**
3,223 sqft 4 Beds 3.5 Baths



STERLING B

Base Price: **\$982,500**
5,291 sqft 5 Beds 5.5 Baths



SUTTON B

Base Price: **\$832,500**
2,938 sqft 5 Beds 3.5 Baths

*Base prices do not reflect options or applicable lot premiums
These prices and features are accurate as of 2026-02-15 08:00 and subject to change thereafter.



Marketed By: Lindsey Marketing Group Offered By: Jeff Lindsey Communities



Equal Housing Opportunity. All information is believed to be accurate, but is not guaranteed and is therefore subject to errors and changes without notice.



WOODBURY B

Base Price: **\$852,900**
3,711 sqft 4 Beds 3.5 Baths

SALES CENTER

Arbor Springs N Drive
Newnan, Georgia

SALES CENTER ASSOCIATE

LeEllen Devries - 678-849-5865

HOURS OF OPERATION

Please contact us to make an
appointment!

*Base prices do not reflect options or applicable lot premiums
These prices and features are accurate as of 2026-02-15 08:00 and subject to change thereafter.





INCLUDED **FEATURES** *PLATINUM*

INTERIOR

- 9' Smooth Ceilings on Main Floor
- Designer Nickel or Black Lighting & Plumbing Fixtures
- Ceiling Fan in Family Room & Master Bedroom
- Ceiling Fan pre-wire in Secondary Bedrooms
- Choice of Designer Interior Doors
- Wrought Iron Pickets on Staircase
- 5" Newells at Bottom of 1st Floor Stairs
- Coffered Ceiling with Crown in Dining Room
- Chair Rail and Shadow Box Trim in Dining Room
- Nickel or Black Knobs & Hinges
- 5" Hardwood or LVP in Foyer, Dining, Kitchen/Breakfast, Family Room
- Tile Flooring in Laundry Room & all Bathrooms*
- Granite in Master and Marble in Secondary Baths
- Elongated Commodes
- Garage Door Opener with 2 Remotes
- Direct Vent Fireplace with Stone Mantle - Stone or Marble Surround
- Large Walk-In Closets
- Upgraded Low Voltage with Structured wiring Box
- Pre-Wired for Security System
- Indoor Utility /Laundry Room with Electrical Connections & Vent

KITCHEN

- Stainless Steel Under Mount Sink
- Single Lever Faucet with Vegetable Sprayer
- Stainless Steel Appliances - Includes Gas Cooktop, Wall

- Mounted Oven & Microwave, Vent Hood & Dishwasher
- Stainless Steel Appliances - Includes Gas Cooktop, Double Wall Mounted Oven, MicroHood & Dishwasher
- Raised Panel or Shaker Cabinets with Soft Close and Knobs*
- Granite Countertops
- Decorative Tile Backsplash*
- Chef's Pantry with Shelving Suite

MASTER SUITE

- Double Custom Vanities
- 5' Tile Shower
- Nickel or Black Frameless Shower Door
- Freestanding Tub & Roman Faucet
- Large Carpeted Walk-In closets
- Vaulted Ceilings*
- Trey Ceilings*
- Private Sitting Room*

EXTERIOR

- Fiber Cement Siding
- Stone Accents with Craftsman Fronts - Craftsman Fronts
- Divided Light Window Grids on Front
- Architectural Roof Shingles
- Master Planned Landscape Package
- 12' x 12' Uncovered Patio*
- Lifetime Vinyl Soffit
- Shutters*
- Pre-Finished Gutters with Splash Blocks
- Exterior Floodlights

- Front & Rear Electrical Outlets & Water Faucets

ENERGY FEATURES

- Quick Recovery Hot Water Heater
- Energy Efficient Heat & Air Systems
- Insulated Low E Windows and Doors
- R-13 Exterior Walls - R-30 Flat Ceilings

COMMUNITY EXCLUSIVE FEATURES

- Underground Utilities
- County Water & Septic
- FHA/VA Approved
- HOA & Protective Covenants
- Street Lights
- Approximately 1 acres per lot

* Varies per Plan

Photo shown is representation & may reflect options/upgrades not included in listed price

*Base prices do not reflect options or applicable lot premiums
These prices and features are accurate as of 2026-02-15 08:00 and subject to change thereafter.

