



JEFF LINDSEY COMMUNITIES

Live your dream.



FAYETTE COUNTY, GA

BERNHARD FARMS

FROM THE

900's

SALES CENTER

Bernhard Road
Fayetteville, GA 30215

HOURS OF OPERATION

Please call to set up an appointment.

DIRECTIONS

From Atlanta, begin on I-75 S. Take exit 237A onto SR-85 South toward Riverdale. In 19 miles, turn right onto Bernhard Road. The development will be on your left in less than a mile.

From Peachtree City, take SR-74 S to turn left onto Redwine Road. In 2 miles, take the first exit at the roundabout onto Bernhard Road. The development will be on your right in 1.5 miles.

Welcome to Bernhard Farms, an exclusive new neighborhood in Fayette County, GA selling now! With just 13 spacious homesites, each 1.5+ acres, this is your opportunity to build your dream home in a peaceful setting while staying close to everything Fayette County has to offer, including top-tier schools! Homes will feature Platinum Package standards, combining luxury design with high-quality finishes. Choose your perfect lot today and start building the home—and lifestyle—you've always imagined.

Jeff Lindsey Communities offers 3% compensation to the selling broker. Please contact us with any questions you may have!

VEE JOKJOHOR

404.379.7173
vee@jefflindseycommunities.com

J.R. OZLEY

770.301.2504
jr@jlc.team



Marketed By: Lindsey Marketing Group Offered By: Jeff Lindsey Communities



Equal Housing Opportunity. All information is believed to be accurate, but is not guaranteed and is therefore subject to errors and changes without notice.

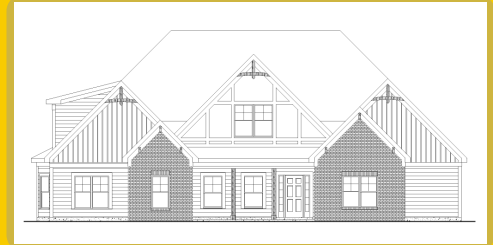
THE IDEAL **PLAN** FOR YOU AND YOUR FAMILY



BENSON F XL Base Price: **\$920,500**
2,977 sqft 4 Beds 3 Baths



BRYANT F 90 Base Price: **\$1,006,900**
3,635 sqft 4 Beds 4 Baths



GREYWELL F Base Price: **\$996,900**
3,662 sqft 5 Beds 4 Baths



HARPER F Base Price: **\$1,004,400**
3,832 sqft 5 Beds 4 Baths



HARRIS F Base Price: **\$918,900**
2,948 sqft 4 Beds 3 Baths



JACKSON F Base Price: **\$1,095,500**
5,259 sqft 5 Beds 5.5 Baths



JORDAN F Base Price: **\$1,090,500**
5 Beds 5.5 Baths



MILLWOOD F Base Price: **\$955,700**
3,463 sqft 5 Beds 4 Baths



MURPHY F Base Price: **\$965,700**
3,695 sqft 5 Beds 3.5 Baths



PALMER F Base Price: **\$942,900**
3,223 sqft 4 Beds 3.5 Baths



STERLING F Base Price: **\$1,097,900**
5,291 sqft 5 Beds 5.5 Baths



SUTTON F Base Price: **\$942,700**
2,946 sqft 5 Beds 3.5 Baths

*Base prices do not reflect options or applicable lot premiums
These prices and features are accurate as of 2026-07-06 07:00 and subject to change thereafter.



Marketed By: Lindsey Marketing Group Offered By: Jeff Lindsey Communities



WOODBURY F

Base Price: **\$966,900**
3,702 sqft 4 Beds 3.5 Baths

SALES CENTER

Bernhard Road
Fayetteville, GA 30215

SALES CENTER ASSOCIATE

Vee Jokjohor - 404.379.7173
J.R. Ozley - 770.301.2504

HOURS OF OPERATION

Please call to set up an appointment.

*Base prices do not reflect options or applicable lot premiums
These prices and features are accurate as of 2026-07-06 07:00 and subject to change thereafter.



AVAILABLE **INVENTORY**

LOT NUMBER	FLOOR PLAN	SALES PRICE	APPROX. SQUARE FOOTAGE
3	GREYWELL F	\$1,070,040	3,662

*Base prices do not reflect options or applicable lot premiums
These prices and features are accurate as of 2026-07-06 07:00 and subject to change thereafter.





PLATINUM

INTERIOR

- 9' Smooth Ceilings on Main Floor
- Designer Nickel or Black Lighting & Plumbing Fixtures
- Ceiling Fan in Family Room & Master Bedroom
- Ceiling Fan pre-wire in Secondary Bedrooms
- Choice of Designer Interior Doors
- Wrought Iron Pickets on Staircase
- 5" Newells at Bottom of 1st Floor Stairs
- Coffered Ceiling with Crown in Dining Room
- Chair Rail and Shadow Box Trim in Dining Room
- Nickel or Black Knobs & Hinges
- 5" Hardwood or LVP in Foyer, Dining, Kitchen/Breakfast, Family Room
- Tile Flooring in Laundry Room & all Bathrooms*
- Granite in Master and Marble in Secondary Baths
- Elongated Commodes
- Garage Door Opener with 2 Remotes
- Wood Burning Fireplace with Cedar Mantle
- Large Walk-In Closets
- Upgraded Low Voltage with Structured wiring Box
- Pre-Wired for Security System
- Indoor Utility /Laundry Room with Electrical Connections & Vent

KITCHEN

- Stainless Steel Under Mount Sink
- Single Lever Faucet with Vegetable Sprayer
- Stainless Steel Appliances - Includes Electric Cooktop, Wall Mounted Oven & Microwave, Vent Hood &

Dishwasher

- Raised Panel or Shaker Cabinets with Soft Close and Knobs*
- Granite Countertops
- Decorative Tile Backsplash*
- Chef's Pantry with Shelving Suite

MASTER SUITE

- Double Custom Vanities
- 5' Tile Shower
- Nickel or Black Frameless Shower Door
- Freestanding Tub & Roman Faucet
- Large Carpeted Walk-In closets
- Vaulted Ceilings*
- Trey Ceilings*
- Private Sitting Room*

EXTERIOR

- Fiber Cement Siding
- Brick Accents with Craftsman Fronts
- Divided Light Window Grids on Front
- Architectural Roof Shingles
- Master Planned Landscape Package
- 12' x 12' Uncovered Patio*
- Lifetime Vinyl Soffit
- Shutters*
- Pre-Finished Gutters with Splash Blocks
- Exterior Floodlights
- Front & Rear Electrical Outlets & Water Faucets

ENERGY FEATURES

- Quick Recovery Hot Water Heater
- Energy Efficient Heat & Air Systems
- Insulated Low E Windows and Doors
- R-13 Exterior Walls - R-30 Flat Ceilings

COMMUNITY EXCLUSIVE FEATURES

- Underground Utilities
- County Water & Septic Tanks
- FHA/VA Approved
- HOA & Protective Covenants
- Street Lights
- Approximately 1.5 acres per lot

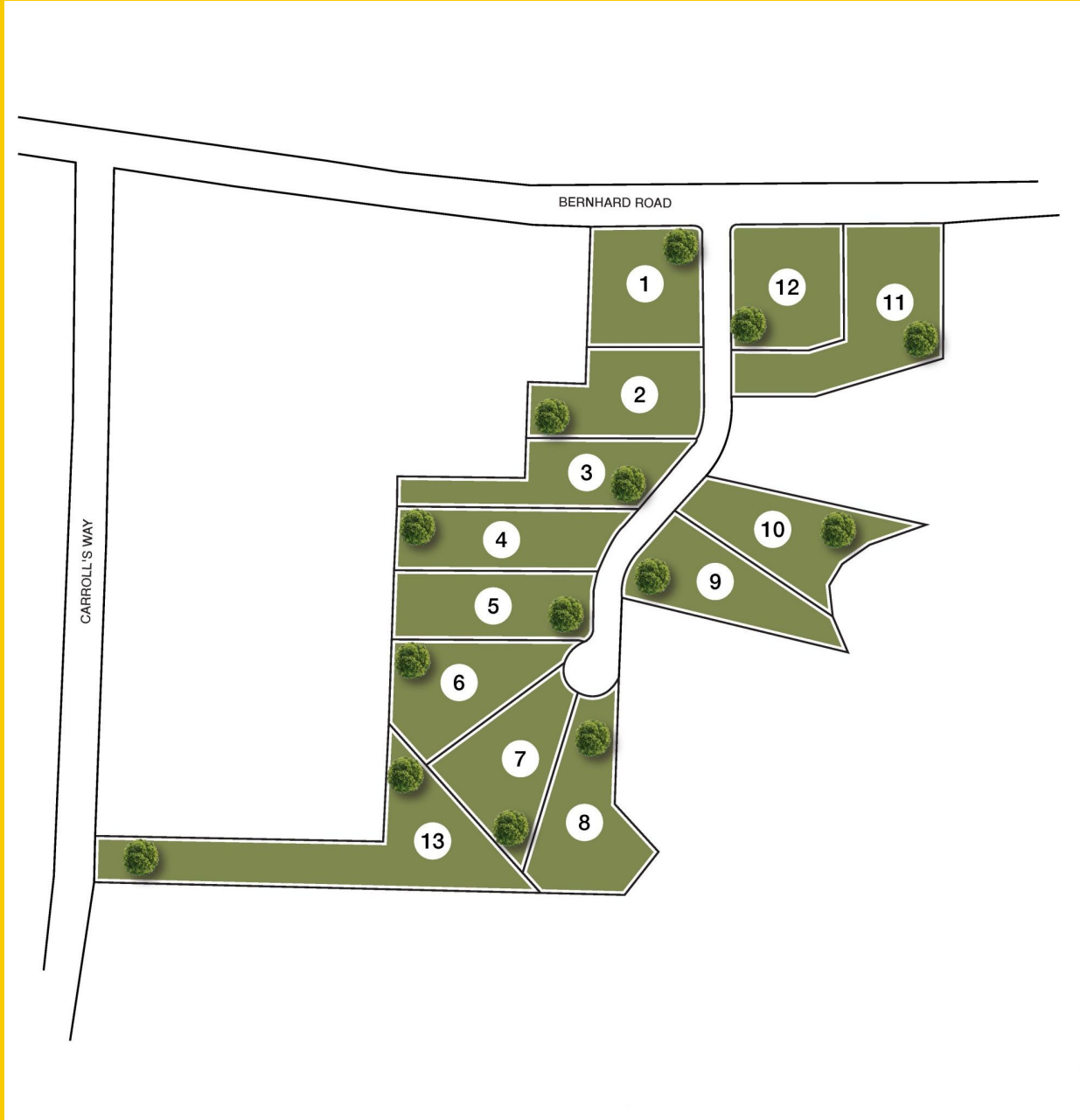
* Varies per Plan

Photo shown is representation & may reflect options/upgrades not included in listed price

*Base prices do not reflect options or applicable lot premiums
These prices and features are accurate as of 2026-07-06 07:00 and subject to change thereafter.



COMMUNITY SITE MAP



Site plans shown are conceptual. Plans are in progress and subject to change without notice. Builder reserves the right of price, plan, and specification changes without notice or prior obligation. Information is believed accurate but is not warranted. All locations are approximate.

*Base prices do not reflect options or applicable lot premiums
These prices and features are accurate as of 2026-07-06 07:00 and subject to change thereafter.

