



JEFF LINDSEY COMMUNITIES

Live your dream.



COWETA COUNTY, GA

FOX HALL PHASE V & VI

FROM THE

600's

Now Selling

SALES CENTER

11 Tattersall Way
Senoia, GA 30276

HOURS OF OPERATION

Friday - Saturday: 11 AM - 5 PM
Sunday: 1 PM - 5 PM

DIRECTIONS

From Newnan: Travel HWY 16 East towards Turin. Right on Elders Mill Road. Travel approx 5.5 miles to stop sign. Straight at stop sign, then bear Right onto Al Roberts Road. Fox Hall is straight ahead. The Model home is located at the First Entrance on the right. It is the First house on the left.

From Atlanta: Travel I-85 South, take Exit 51. Left onto HWY 154. Right onto HWY 54, Left on HWY 16 East at circle. Right onto Elders Mill Road. Travel approx 5.5 miles to stop sign. Straight at stop sign, bear Right onto Al Roberts Road. Fox Hall is straight ahead. The Model Home is located at the first entrance on the Right. It is the first house on your left.

Welcome to Fox Hall, a neighborhood designed for fun! This beautiful community offers gorgeous homesites in the heart of Senoia. Fox Hall features beautifully landscaped common areas, equestrian-style fences, avenue lamp posts as well as an outstanding amenities package. Amenities include a competition-sized swimming pool, lighted tennis courts with terraced seating and covered pavilions, playground with picnic tables and gazebo, a charming clubhouse with wrap-around porch, fully equipped exercise room, and MORE! Build your home today with Jeff Lindsey Communities!

Jeff Lindsey Communities offers 3% compensation to the selling broker. Please contact us with any questions you may have!

VEE JOKJOHOR

404.379.7173
vee@jefflindseycommunities.com

LEELLEN DEVRIES

678.849.5865
LeEllen.DeVries@jefflindseycommunities.com



Marketed By: Lindsey Marketing Group Offered By: Jeff Lindsey Communities



Equal Housing Opportunity. All information is believed to be accurate, but is not guaranteed and is therefore subject to errors and changes without notice.

THE IDEAL **PLAN** FOR YOU AND YOUR FAMILY



BENSON B XL Base Price: **\$635,900**
2,977 sqft 4 Beds 3 Baths



BRYANT B 90 Base Price: **\$709,500**
3,635 sqft 4 Beds 4 Baths



GREYWELL B Base Price: **\$698,500**
3,662 sqft 5 Beds 4 Baths



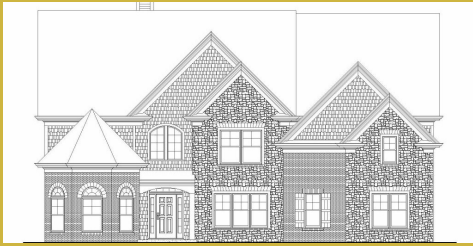
HARPER B Base Price: **\$707,800**
3,832 sqft 5 Beds 4 Baths



HARRIS B Base Price: **\$628,900**
2,948 sqft 4 Beds 3 Baths



JACKSON B Base Price: **\$789,700**
5,252 sqft 5 Beds 5.5 Baths



JORDAN Base Price: **\$774,500**
5,331 sqft 5 Beds 5.5 Baths



MILLWOOD B Base Price: **\$651,900**
3,454 sqft 5 Beds 4 Baths



MURPHY B Base Price: **\$661,700**
3,687 sqft 5 Beds 3.5 Baths



PALMER B Base Price: **\$637,900**
3,223 sqft 4 Beds 3.5 Baths



SPRINGER B Base Price: **\$620,500**
2,765 sqft 4 Beds 3 Baths



STERLING B Base Price: **\$785,900**
5,291 sqft 5 Beds 5.5 Baths

*Base prices do not reflect options or applicable lot premiums
These prices and features are accurate as of 2026-07-01 07:00 and subject to change thereafter.



Marketed By: Lindsey Marketing Group Offered By: Jeff Lindsey Communities



SUTTON C

Base Price: **\$636,900**
2,946 sqft 5 Beds 3.5 Baths



WOODBURY B

Base Price: **\$669,900**
3,711 sqft 4 Beds 3.5 Baths

SALES CENTER
11 Tattersall Way
Senoia, GA 30276

SALES CENTER ASSOCIATE
Vee Jokjohor - 404.379.7173
LeEllen DeVries - 678.849.5865

HOURS OF OPERATION
Friday - Saturday: 11 AM - 5 PM
Sunday: 1 PM - 5 PM

*Base prices do not reflect options or applicable lot premiums
These prices and features are accurate as of 2026-07-01 07:00 and subject to change thereafter.



AVAILABLE INVENTORY

LOT NUMBER	FLOOR PLAN	SALES PRICE	APPROX. SQUARE FOOTAGE
97	GREYWELL B	\$722,965	3,662
5-36	PALMER B	\$723,340	3,509
5-100	GREYWELL F	\$752,015	3,706
5-98	WOODBURY A	\$758,110	4,215

*Base prices do not reflect options or applicable lot premiums
These prices and features are accurate as of 2026-07-01 07:00 and subject to change thereafter.





INCLUDED FEATURES PLATINUM

INTERIOR

- 9' Smooth Ceilings on Main Floor
- Designer Nickel or Bronze Lighting & Plumbing Fixtures
- Ceiling Fan in Family Room & Master Bedroom
- Ceiling Fan pre-wire in Secondary Bedrooms
- Designer Interior Doors
- Wrought Iron Pickets on Staircase
- 5" Newells at Bottom of 1st Floor Stairs
- Coffered Ceiling with Crown in Dining Room
- Chair Rail and Shadow Box or Board & Batten Trim in Dining Room
- Nickel or Bronze Knobs & Hinges
- Engineered Hardwood or LVP in Foyer, Dining, Kitchen/Breakfast, Family Room
- Tile Flooring or LVP in Laundry Room & all Bathrooms*
- Granite in Master and Cultured Marble in Secondary Baths
- Elongated Commodes
- Wood Burning Fireplace with Mantle and Stone Surround
- Large Walk-In Closets
- Low Voltage Package with Structured Wiring Box
- Indoor Utility/Laundry Room with Electrical Connections & Vent

KITCHEN

- Stainless Steel Undermount Sink
- Single Lever Faucet with Vegetable Sprayer
- Stainless Steel Appliances - Includes 30" Electric Cooktop, Wall Mounted Double Oven, MicroHood &

- Dishwasher
- Raised Panel or Shaker Cabinets with Soft Close and Decorative Cabinet Hardware*
- Granite, Marble or Quartz Countertops
- Decorative Tile Backsplash*
- Chef's Pantry with Shelving Suite

MASTER SUITE

- Double Custom Vanity
- 5' Tile Shower*
- Nickel or Bronze Frameless Shower Door
- Freestanding Tub & Roman Faucet
- Large Carpeted Walk-In closets
- Vaulted Ceilings*
- Trey Ceilings*
- Private Sitting Room*

EXTERIOR

- Fiber Cement Siding
- Brick/Stone Accents with Craftsman Fronts*
- Divided Light Window Grids on Front
- Architectural Roof Shingles
- Master Planned Landscape Package
- 12' x 12' Uncovered Patio*
- Lifetime Vinyl Soffit
- Shutters*
- Pre-Finished Gutters with Splash Blocks
- Exterior Floodlights
- Two Exterior Electrical Outlets & Water Faucets
- Garage Door Opener with 2 Remotes

ENERGY FEATURES

- Electric Dryer Hook-up
- Quick Recovery Hot Water Heater
- Energy Efficient Heat & Air System
- Insulated Low E Windows and Doors
- R-13 Exterior Walls - R-30 Flat Ceilings

COMMUNITY EXCLUSIVE FEATURES

- Underground Utilities
- County Water & Septic Tanks
- FHA/VA Approved
- HOA & Protective Covenants
- Street Lights
- Approximately 1 acre per lot
- Belmont, Jackson, Jordan and Sterling require a Floor Plan Premium*

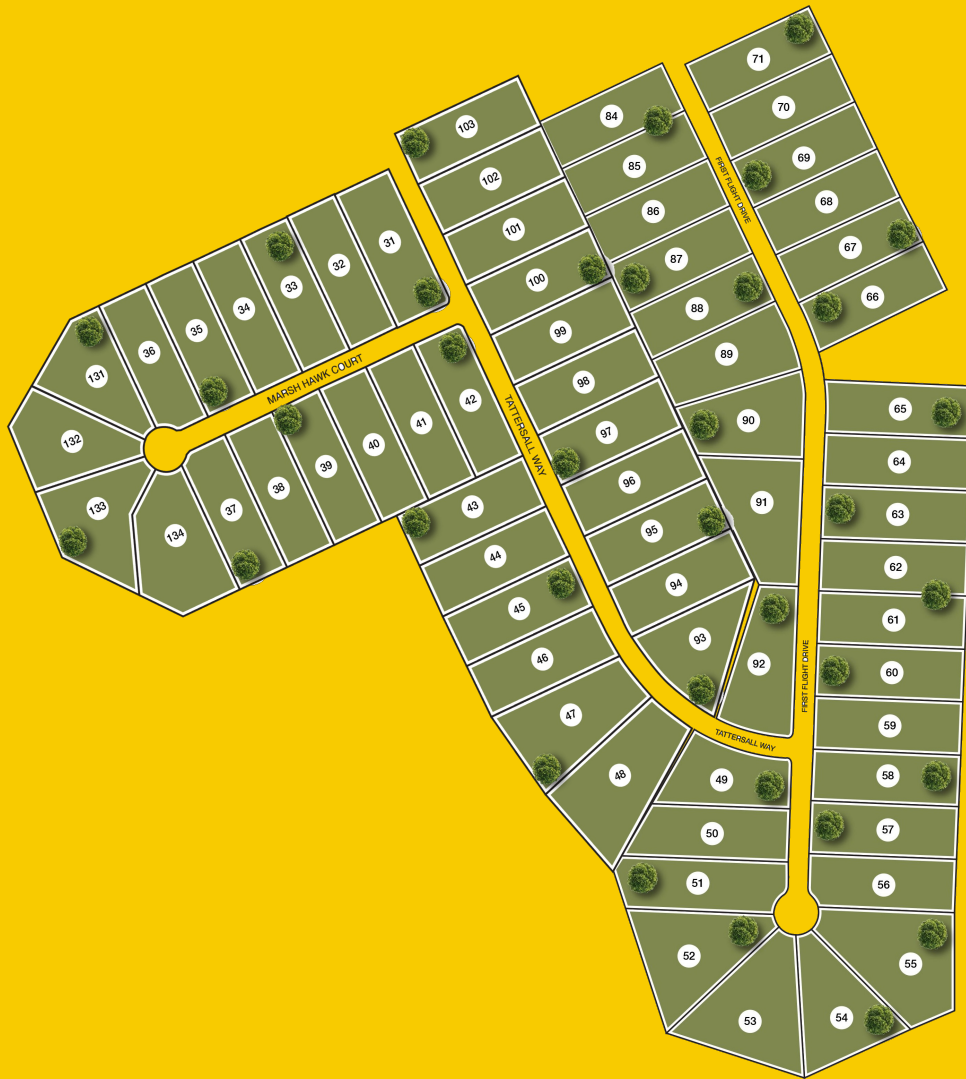
* Varies per Plan

Photo shown is representation & may reflect options/upgrades not included in listed price

*Base prices do not reflect options or applicable lot premiums
These prices and features are accurate as of 2026-07-01 07:00 and subject to change thereafter.



COMMUNITY SITE MAP



Site plans shown are conceptual. Plans are in progress and subject to change without notice. Builder reserves the right of price, plan, and specification changes without notice or prior obligation. Information is believed accurate but is not warranted. All locations are approximate.

*Base prices do not reflect options or applicable lot premiums
These prices and features are accurate as of 2026-07-01 07:00 and subject to change thereafter.

