



COWETA COUNTY, GEORGIA

STALLINGS FARM NORTH

From the \$700's

SALES CENTER

Stallings Road
Senoia, Georgia 30276

HOURS OF OPERATION

Please contact us to make an appointment.

DIRECTIONS

From I-85 S, take exit 20 onto Collinsworth Road. In half a mile, turn left onto Collinsworth Road. In 900 feet, turn right onto Canongate Road. Drive for 8.5 miles, then turn left onto Fischer Road. In 0.3 miles, turn right onto SR-54. In 1.9 miles, turn left onto Christopher Road. Drive 2.6 miles and turn left onto McIntosh Trail. In about 3.2 miles, the development will be on your left.

This community provides the ideal setting for your dream home just outside of Downtown Senoia. Enjoy the peaceful atmosphere while being just minutes from Peachtree City and Newnan, with easy access to shopping, dining, and top-rated schools. Whether you're drawn to the historic downtown, the tight-knit community feel, or the scenic surroundings, Senoia is a place you'll love to call home. Homes are selling now—don't miss your chance to be part of this exceptional neighborhood!

Jeff Lindsey Communities offers 3% compensation to the selling broker. Please contact us with any questions you may have!

LEELLEN DEVRIES

678-849-5865

leellen.devries@jefflindseycommunities.com



VEE JOKJOHOR

Marketed By: Lindsey Marketing Group Offered By: Jeff Lindsey Communities

404.379.7173

vee@jefflindseycommunities.com



Equal Housing Opportunity. All information is believed to be accurate, but is not guaranteed and is therefore subject to errors and changes without notice.

THE IDEAL **PLAN** FOR YOU AND YOUR FAMILY



ANDERSON F Base Price: **\$726,500**
3,505 sqft 4 Beds 3.5 Baths



BELLINGER F Base Price: **\$674,500**
2,807 sqft 4 Beds 3 Baths



BRANTLEY F Base Price: **\$664,500**
2,660 sqft 4 Beds 3 Baths



BRYANT F 90 Base Price: **\$739,900**
3,635 sqft 4 Beds 4 Baths



CARAY F Base Price: **\$685,900**
2,792 sqft 5 Beds 3.5 Baths



GORDON F Base Price: **\$726,900**
3,507 sqft 5 Beds 4 Baths



HARRIS F Base Price: **\$673,700**
2,948 sqft 4 Beds 3 Baths



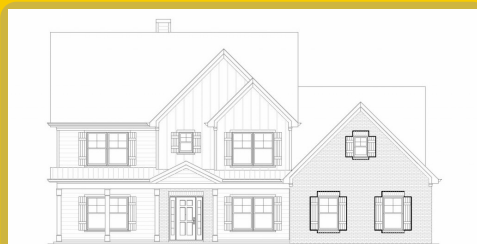
JACKSON F Base Price: **\$834,900**
5,259 sqft 5 Beds 5.5 Baths



MILLWOOD F Base Price: **\$703,500**
3,463 sqft 5 Beds 4 Baths



MURPHY F Base Price: **\$708,900**
3,695 sqft 5 Beds 3.5 Baths



TURNER F Base Price: **\$694,500**
3,079 sqft 4 Beds 3.5 Baths

SALES CENTER
Stallings Road
Senoia, Georgia 30276

SALES CENTER ASSOCIATE
LeEllen DeVries - 678-849-5865
Vee Jokjohor - 404.379.7173

HOURS OF OPERATION
Please contact us to make an appointment.

*Base prices do not reflect options or applicable lot premiums
These prices and features are accurate as of 2026-01-27 08:00 and subject to change thereafter.





INCLUDED **FEATURES** PLATINUM

INTERIOR

- 9' Smooth Ceilings on Main Floor
- Designer Nickel or Black Lighting & Plumbing Fixtures
- Ceiling Fan in Family Room & Master Bedroom
- Ceiling Fan pre-wire in Secondary Bedrooms
- Choice of Designer Interior Doors
- Wrought Iron Pickets on Staircase
- 5" Newells at Bottom of 1st Floor Stairs
- Coffered Ceiling with Crown in Dining Room
- Chair Rail and Shadow Box Trim in Dining Room
- Nickel or Black Knobs & Hinges
- 5" Hardwood or LVP in Foyer, Dining, Kitchen/Breakfast, Family Room
- Tile Flooring in Laundry Room & all Bathrooms*
- Granite in Master and Marble in Secondary Baths
- Elongated Commodes
- Garage Door Opener with 2 Remotes
- Wood Burning Fireplace with Stone Mantle
- Large Walk-In Closets
- Upgraded Low Voltage with Structured wiring Box
- Pre-Wired for Security System
- Indoor Utility /Laundry Room with Electrical Connections & Vent

KITCHEN

- Stainless Steel Under Mount Sink
- Single Lever Faucet with Vegetable Sprayer
- Stainless Steel Appliances - Includes Electric Cooktop, Wall Mounted Oven & Microwave, Vent Hood &

Dishwasher

- Stainless Steel Appliances - Includes Electric Cooktop, Double Wall Mounted Oven, MicroHood & Dishwasher
- Raised Panel or Shaker Cabinets with Soft Close and Knobs*
- Granite Countertops
- Decorative Tile Backsplash*
- Chef's Pantry with Shelving Suite

MASTER SUITE

- Double Custom Vanities
- 5' Tile Shower
- Nickel or Black Frameless Shower Door
- Freestanding Tub & Roman Faucet
- Large Carpeted Walk-In closets
- Vaulted Ceilings*
- Trey Ceilings*
- Private Sitting Room*

EXTERIOR

- Fiber Cement Siding
- Brick/Stone Accents with Craftsman Fronts - Craftsman Fronts
- Divided Light Window Grids on Front
- Architectural Roof Shingles
- Master Planned Landscape Package
- 12' x 12' Uncovered Patio*
- Lifetime Vinyl Soffit
- Shutters*
- Pre-Finished Gutters with Splash Blocks

- Exterior Floodlights
- Front & Rear Electrical Outlets & Water Faucets

ENERGY FEATURES

- Quick Recovery Hot Water Heater
- Energy Efficient Heat & Air Systems
- Insulated Low E Windows and Doors
- R-13 Exterior Walls - R-30 Flat Ceilings

COMMUNITY EXCLUSIVE FEATURES

- Underground Utilities
- City Water & Sewer
- FHA/VA Approved
- Protective Covenants
- Delete
- Approximately 0.5 acres per lot

* Varies per Plan

Photo shown is representation & may reflect options/upgrades not included in listed price

*Base prices do not reflect options or applicable lot premiums

These prices and features are accurate as of 2026-01-27 08:00 and subject to change thereafter.

