

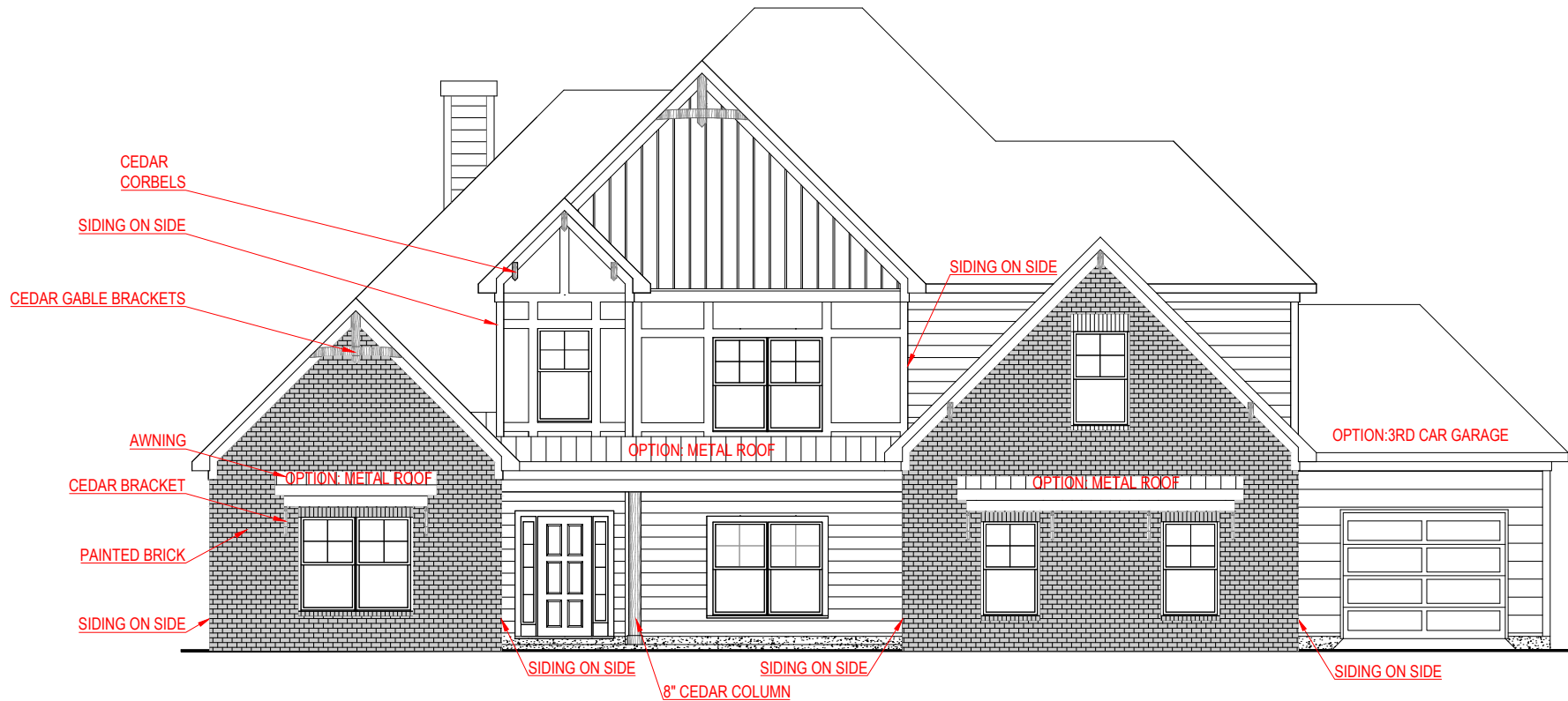
**FRONT ELEVATION - A VERSION**

**WOODBURY**  
SIDE ENTRY VERSION



SQUARE FOOTAGE:	
FIRST FLOOR:	3,014 SQ. FT.
SECOND FLOOR:	688 SQ. FT.
<b>TOTAL:</b>	<b>3,702 SQ. FT.</b>

\*THE DRAWING(S) ON THIS PAGE ARE A GRAPHICAL REPRESENTATION ONLY. PLEASE CONSULT YOUR AGENT FOR SPECIFIC INFORMATION REGARDING THIS FLOOR PLAN. THE DESIGN OF THE FLOOR PLAN REPRESENTED IS SUBJECT TO CHANGE WITHOUT NOTICE.



**FRONT ELEVATION - F VERSION**

**WOODBURY**  
SIDE ENTRY VERSION

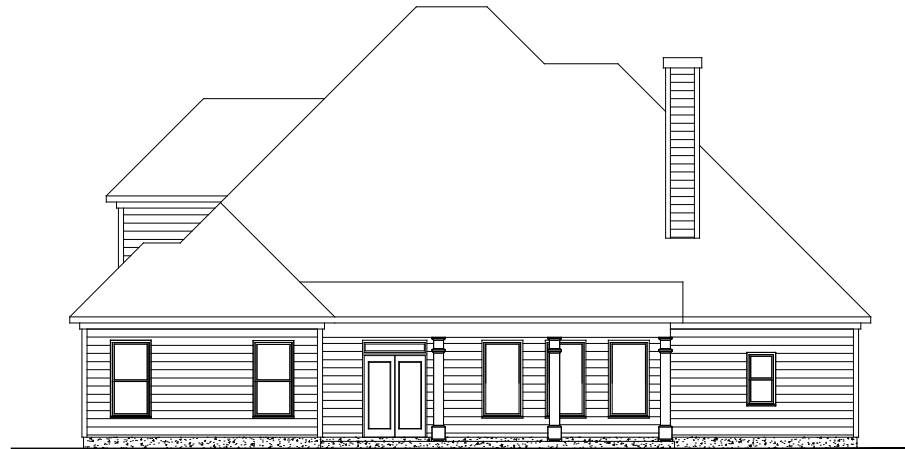


SQUARE FOOTAGE:	
FIRST FLOOR:	3,014 SQ. FT.
SECOND FLOOR:	688 SQ. FT.
TOTAL:	3,702 SQ. FT.

\*THE DRAWING(S) ON THIS PAGE ARE A GRAPHICAL REPRESENTATION ONLY. PLEASE CONSULT YOUR AGENT FOR SPECIFIC INFORMATION REGARDING THIS FLOOR PLAN. THE DESIGN OF THE FLOOR PLAN REPRESENTED IS SUBJECT TO CHANGE WITHOUT NOTICE.



**REAR ELEVATION - STANDARD PATIO**



**REAR ELEVATION - EXPANDED PATIO OPTION**

# WOODBURY

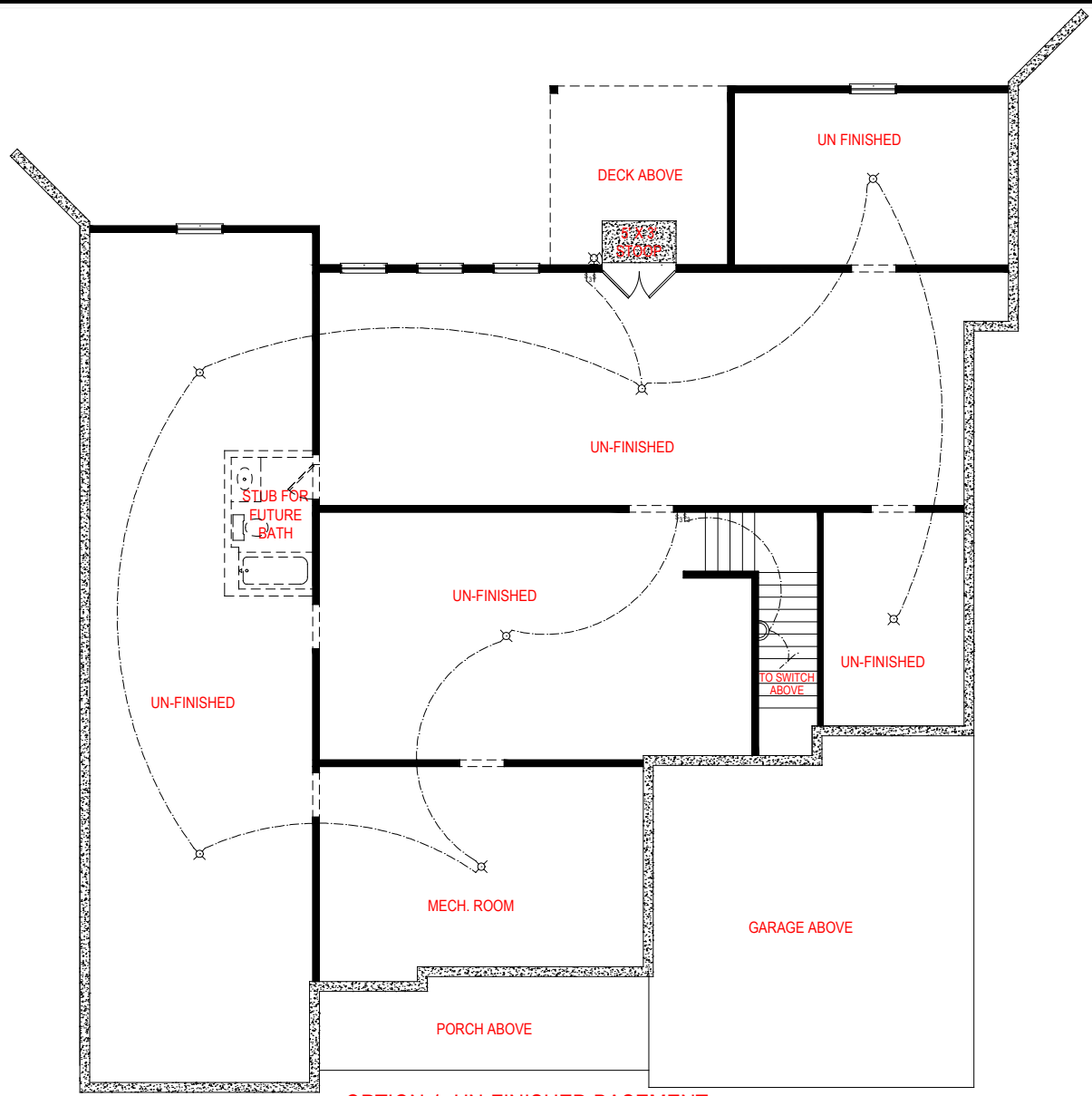
SIDE ENTRY VERSION





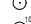

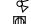

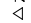
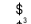
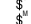





THE DRAWING(S) ON THIS PAGE ARE A GRAPHICAL REPRESENTATION ONLY. PLEASE CONSULT YOUR AGENT FOR SPECIFIC INFORMATION REGARDING THIS FLOOR PLAN. THE DESIGN OF THE FLOOR PLAN REPRESENTED IS SUBJECT TO CHANGE WITHOUT NOTICE.

**SQUARE FOOTAGE:**

FIRST FLOOR:	3,014 SQ. FT.
SECOND FLOOR:	688 SQ. FT.
<b>TOTAL:</b>	<b>3,702 SQ. FT.</b>



**OPTION 1: UN-FINISHED BASEMENT**

- ELECTRICAL LEGEND**
-  CEILING LIGHT FIXTURE
  -  WALL LIGHT FIXTURE
  -  7" LED DISK
  -  10" LED DISK
  -  FLOOD LIGHT FIXTURE
  -  DUPLEX FLOOR OUTLET
  -  TELEPHONE
  -  TELEVISION
  -  SWITCH
  -  3-WAY SWITCH
  -  MOTION SENSOR SWITCH
  -  EXHAUST FAN
  -  EXHAUST FAN/LIGHT
  -  SCONCE LIGHT FIXTURE

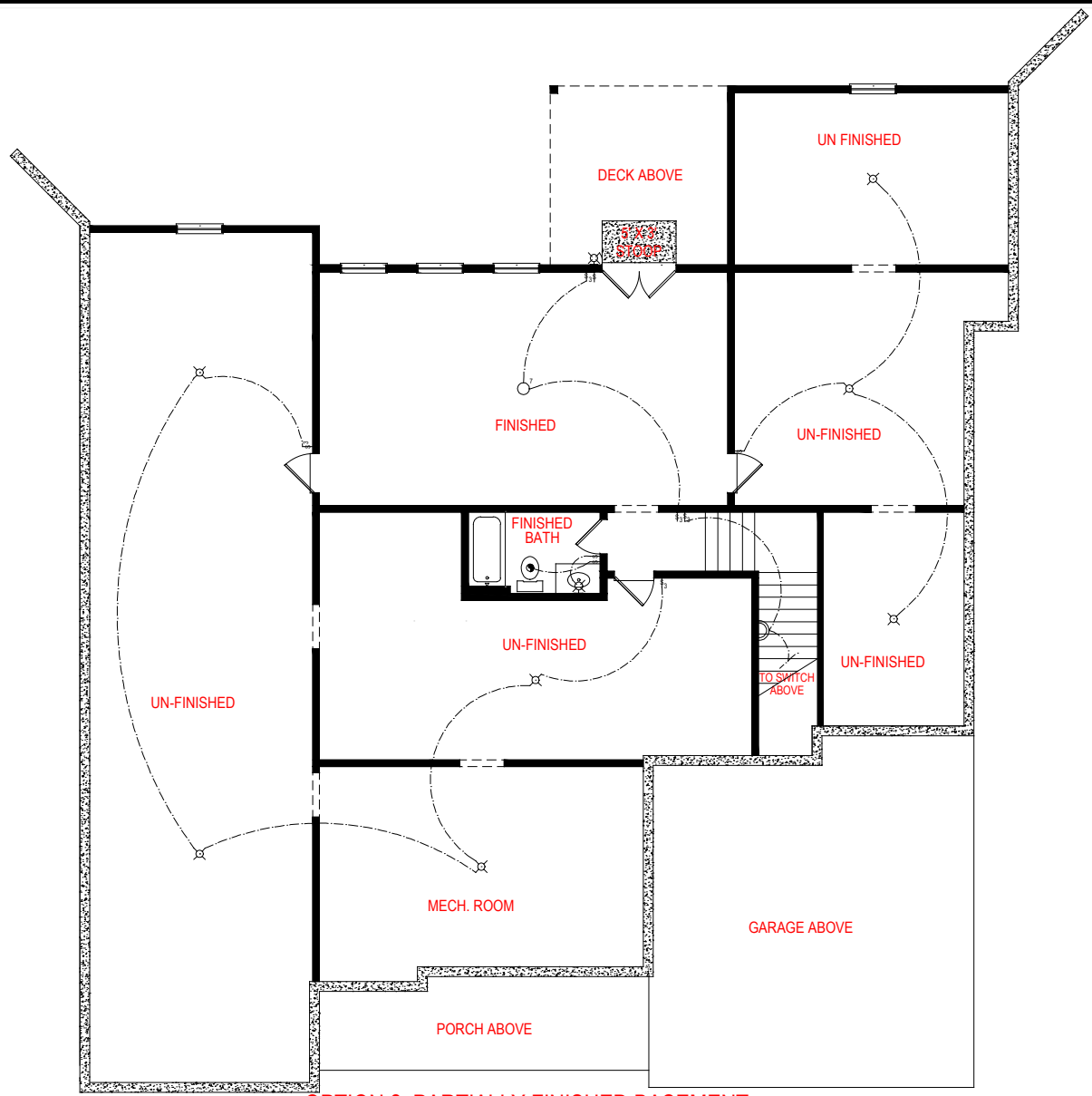
**SQUARE FOOTAGE:**

FIRST FLOOR:	3,014 SQ. FT.
SECOND FLOOR:	688 SQ. FT.
<b>TOTAL:</b>	<b>3,702 SQ. FT.</b>



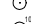

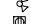

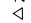
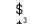
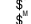





**WOODBURY**  
SIDE ENTRY VERSION



\*THE DRAWING(S) ON THIS PAGE ARE A GRAPHICAL REPRESENTATION ONLY. PLEASE CONSULT YOUR AGENT FOR SPECIFIC INFORMATION REGARDING THIS FLOOR PLAN. THE DESIGN OF THE FLOOR PLAN REPRESENTED IS SUBJECT TO CHANGE WITHOUT NOTICE.



**OPTION 2: PARTIALLY FINISHED BASEMENT**  
529 SQ.FT.

- ELECTRICAL LEGEND**
-  CEILING LIGHT FIXTURE
  -  WALL LIGHT FIXTURE
  -  7" LED DISK
  -  10" LED DISK
  -  FLOOD LIGHT FIXTURE
  -  DUPLEX FLOOR OUTLET
  -  TELEPHONE
  -  TELEVISION
  -  SWITCH
  -  3-WAY SWITCH
  -  MOTION SENSOR SWITCH
  -  EXHAUST FAN
  -  EXHAUST FAN/LIGHT
  -  SCONCE LIGHT FIXTURE

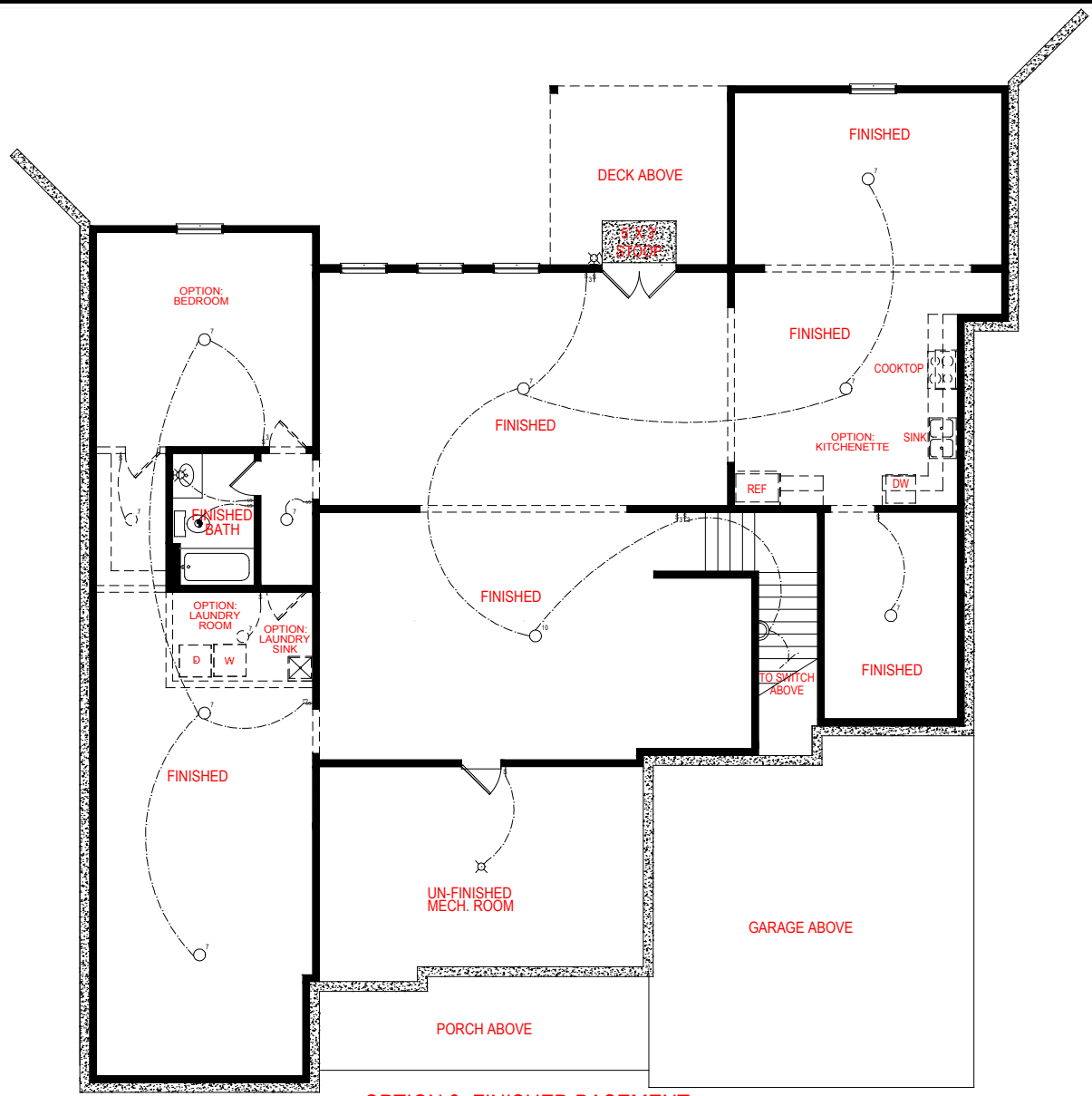
**SQUARE FOOTAGE:**

FIRST FLOOR:	3,014 SQ. FT.
SECOND FLOOR:	688 SQ. FT.
<b>TOTAL:</b>	<b>3,702 SQ. FT.</b>

**WOODBURY**  
SIDE ENTRY VERSION



\*THE DRAWING(S) ON THIS PAGE ARE A GRAPHICAL REPRESENTATION ONLY. PLEASE CONSULT YOUR AGENT FOR SPECIFIC INFORMATION REGARDING THIS FLOOR PLAN. THE DESIGN OF THE FLOOR PLAN REPRESENTED IS SUBJECT TO CHANGE WITHOUT NOTICE.



**OPTION 3: FINISHED BASEMENT**  
2,494 SQ.FT.

- ELECTRICAL LEGEND**
- CEILING LIGHT FIXTURE
  - WALL LIGHT FIXTURE
  - 7" LED DISK
  - 10" LED DISK
  - FLOOD LIGHT FIXTURE
  - DUPLEX FLOOR OUTLET
  - TELEPHONE
  - TELEVISION
  - SWITCH
  - 3-WAY SWITCH
  - MOTION SENSOR SWITCH
  - EXHAUST FAN
  - EXHAUST FAN/LIGHT
  - SCONCE LIGHT FIXTURE

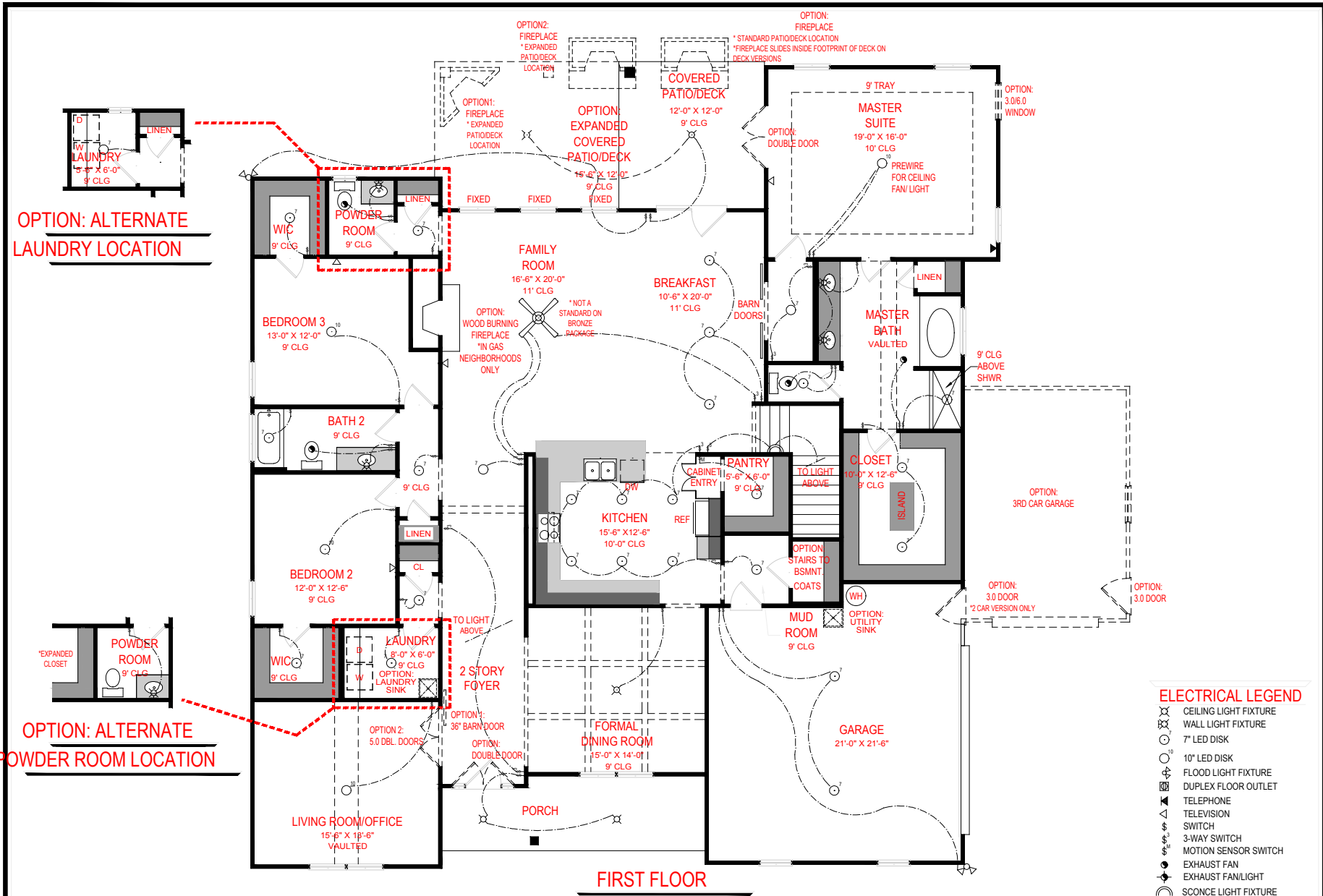
**SQUARE FOOTAGE:**

FIRST FLOOR:	3,014 SQ. FT.
SECOND FLOOR:	688 SQ. FT.
<b>TOTAL:</b>	<b>3,702 SQ. FT.</b>

**WOODBURY**  
SIDE ENTRY VERSION




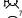





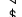
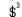


\*THE DRAWING(S) ON THIS PAGE ARE A GRAPHICAL REPRESENTATION ONLY. PLEASE CONSULT YOUR AGENT FOR SPECIFIC INFORMATION REGARDING THIS FLOOR PLAN. THE DESIGN OF THE FLOOR PLAN REPRESENTED IS SUBJECT TO CHANGE WITHOUT NOTICE.



**OPTION: ALTERNATE LAUNDRY LOCATION**

**OPTION: ALTERNATE POWDER ROOM LOCATION**

**ELECTRICAL LEGEND**

-  CEILING LIGHT FIXTURE
-  WALL LIGHT FIXTURE
-  7" LED DISK
-  10" LED DISK
-  FLOOD LIGHT FIXTURE
-  DUPLEX FLOOR OUTLET
-  TELEPHONE
-  TELEVISION
-  SWITCH
-  3-WAY SWITCH
-  MOTION SENSOR SWITCH
-  EXHAUST FAN
-  EXHAUST FAN/LIGHT
-  SCONCE LIGHT FIXTURE

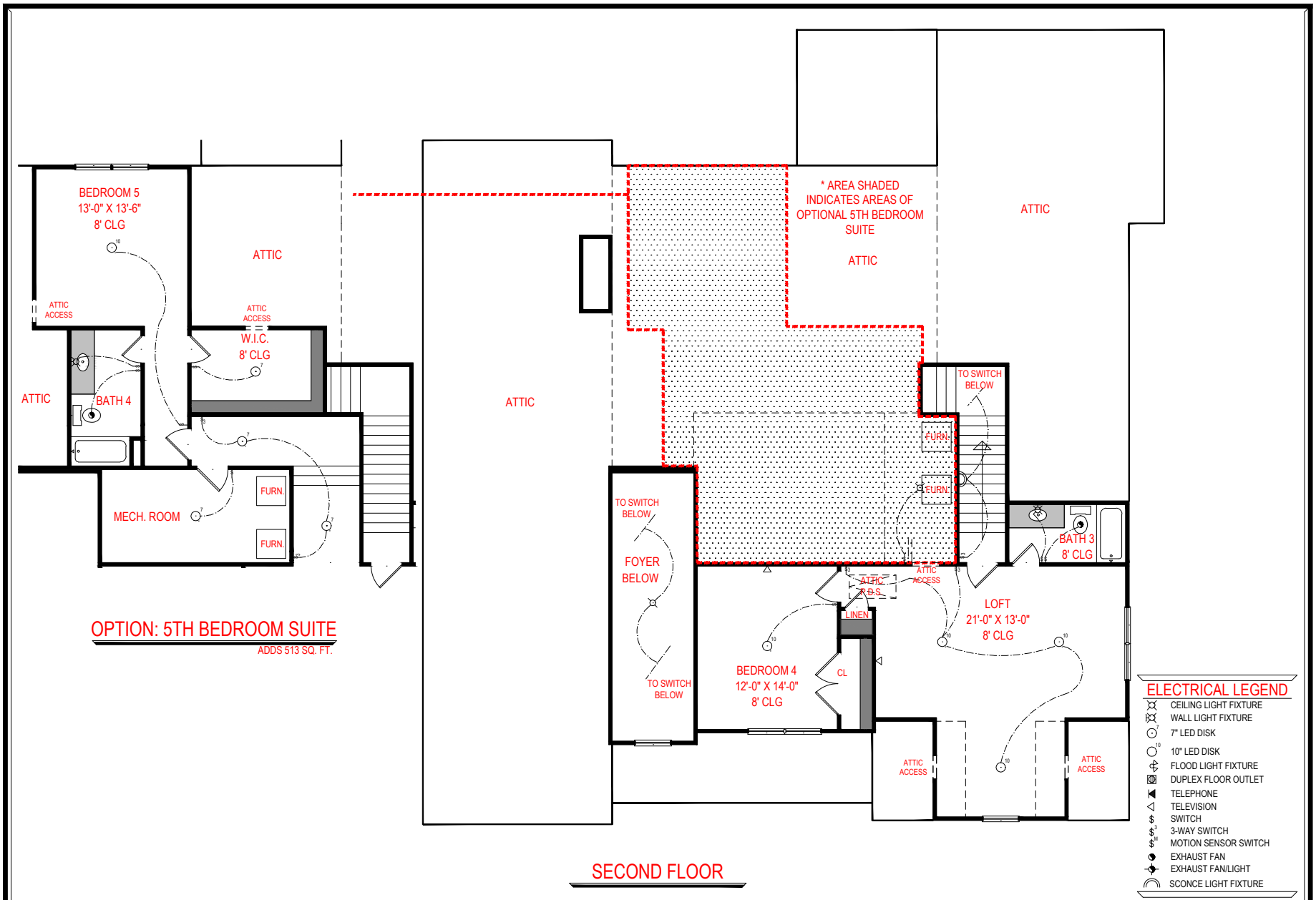
**SQUARE FOOTAGE:**

FIRST FLOOR: 3,014 SQ. FT.  
 SECOND FLOOR: 688 SQ. FT.  
 TOTAL: 3,702 SQ. FT.

**WOODBURY**  
 SIDE ENTRY VERSION



\*THE DRAWING(S) ON THIS PAGE ARE A GRAPHICAL REPRESENTATION ONLY. PLEASE CONSULT YOUR AGENT FOR SPECIFIC INFORMATION REGARDING THIS FLOOR PLAN. THE DESIGN OF THE FLOOR PLAN REPRESENTED IS SUBJECT TO CHANGE WITHOUT NOTICE.



**OPTION: 5TH BEDROOM SUITE**  
 ADDS 513 SQ. FT.

**SECOND FLOOR**

**ELECTRICAL LEGEND**

- CEILING LIGHT FIXTURE
- WALL LIGHT FIXTURE
- 7" LED DISK
- 10" LED DISK
- FLOOD LIGHT FIXTURE
- DUPLEX FLOOR OUTLET
- TELEPHONE
- TELEVISION
- SWITCH
- 3-WAY SWITCH
- MOTION SENSOR SWITCH
- EXHAUST FAN
- EXHAUST FAN/LIGHT
- SCONCE LIGHT FIXTURE

**WOODBURY**  
 SIDE ENTRY VERSION



**SQUARE FOOTAGE:**

FIRST FLOOR:	3,014 SQ. FT.
SECOND FLOOR:	688 SQ. FT.
<b>TOTAL:</b>	<b>3,702 SQ. FT.</b>

\*THE DRAWING(S) ON THIS PAGE ARE A GRAPHICAL REPRESENTATION ONLY. PLEASE CONSULT YOUR AGENT FOR SPECIFIC INFORMATION REGARDING THIS FLOOR PLAN. THE DESIGN OF THE FLOOR PLAN REPRESENTED IS SUBJECT TO CHANGE WITHOUT NOTICE.