



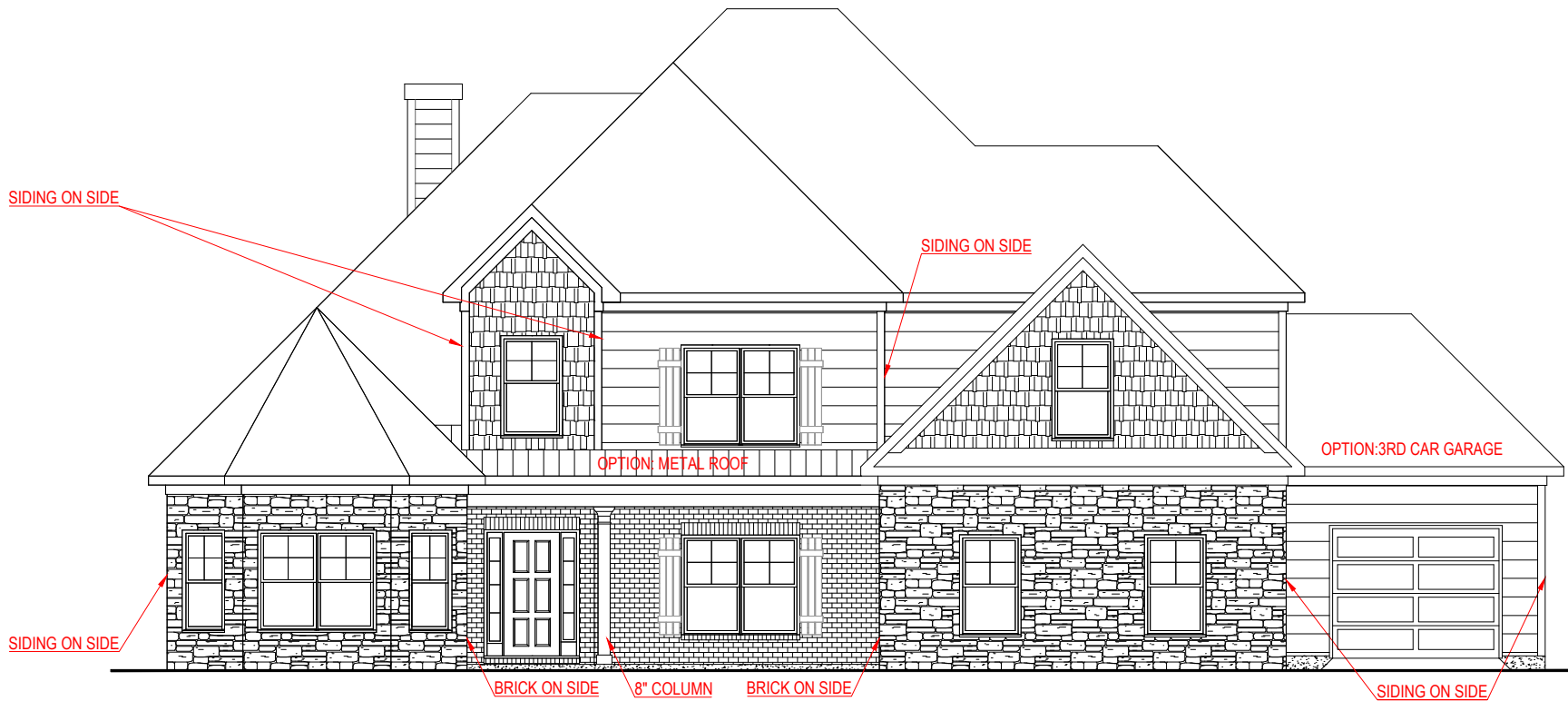
FRONT ELEVATION - B VERSION

WOODBURY
SIDE ENTRY VERSION



| SQUARE FOOTAGE: | |
|-----------------|----------------------|
| FIRST FLOOR: | 3,023 SQ. FT. |
| SECOND FLOOR: | 688 SQ. FT. |
| TOTAL: | 3,711 SQ. FT. |

*THE DRAWING(S) ON THIS PAGE ARE A GRAPHICAL REPRESENTATION ONLY. PLEASE CONSULT YOUR AGENT FOR SPECIFIC INFORMATION REGARDING THIS FLOOR PLAN. THE DESIGN OF THE FLOOR PLAN REPRESENTED IS SUBJECT TO CHANGE WITHOUT NOTICE.



FRONT ELEVATION - D VERSION

WOODBURY
SIDE ENTRY VERSION

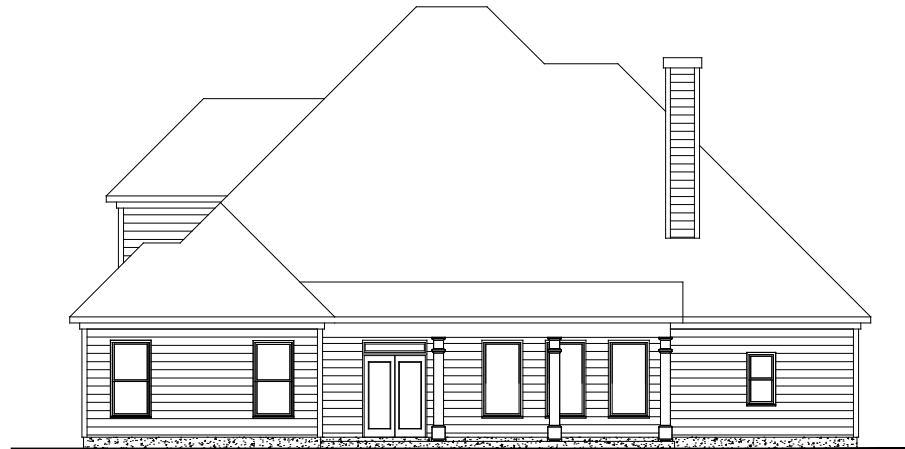


| SQUARE FOOTAGE: | |
|-----------------|----------------------|
| FIRST FLOOR: | 3,023 SQ. FT. |
| SECOND FLOOR: | 688 SQ. FT. |
| TOTAL: | 3,711 SQ. FT. |

*THE DRAWING(S) ON THIS PAGE ARE A GRAPHICAL REPRESENTATION ONLY. PLEASE CONSULT YOUR AGENT FOR SPECIFIC INFORMATION REGARDING THIS FLOOR PLAN. THE DESIGN OF THE FLOOR PLAN REPRESENTED IS SUBJECT TO CHANGE WITHOUT NOTICE.



REAR ELEVATION - STANDARD PATIO



REAR ELEVATION - EXPANDED PATIO OPTION

WOODBURY

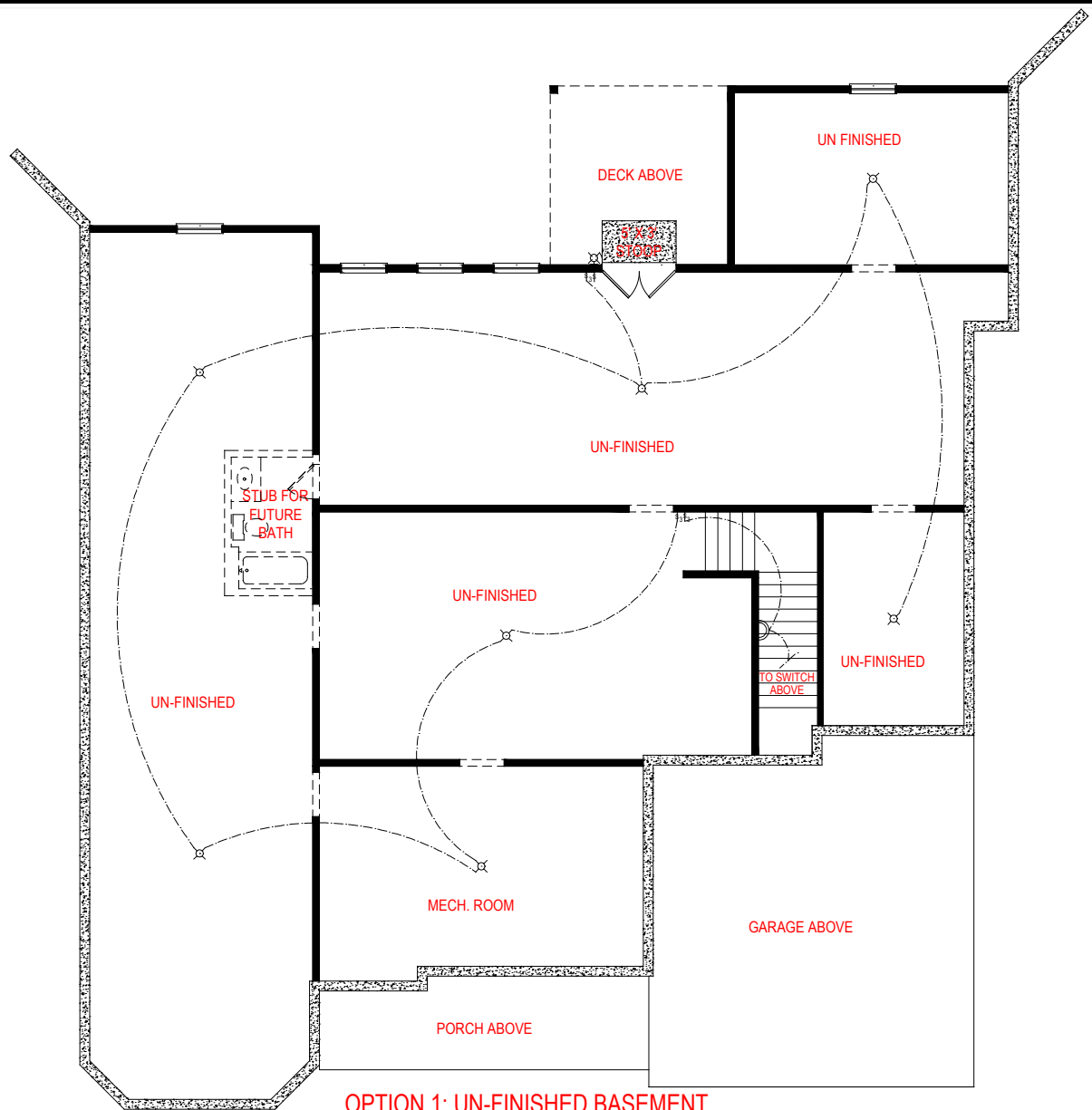
SIDE ENTRY VERSION



*THE DRAWING(S) ON THIS PAGE ARE A GRAPHICAL REPRESENTATION ONLY. PLEASE CONSULT YOUR AGENT FOR SPECIFIC INFORMATION REGARDING THIS FLOOR PLAN. THE DESIGN OF THE FLOOR PLAN REPRESENTED IS SUBJECT TO CHANGE WITHOUT NOTICE.

SQUARE FOOTAGE:

FIRST FLOOR: 3,023 SQ. FT.
SECOND FLOOR: 688 SQ. FT.
TOTAL: 3,711 SQ. FT.



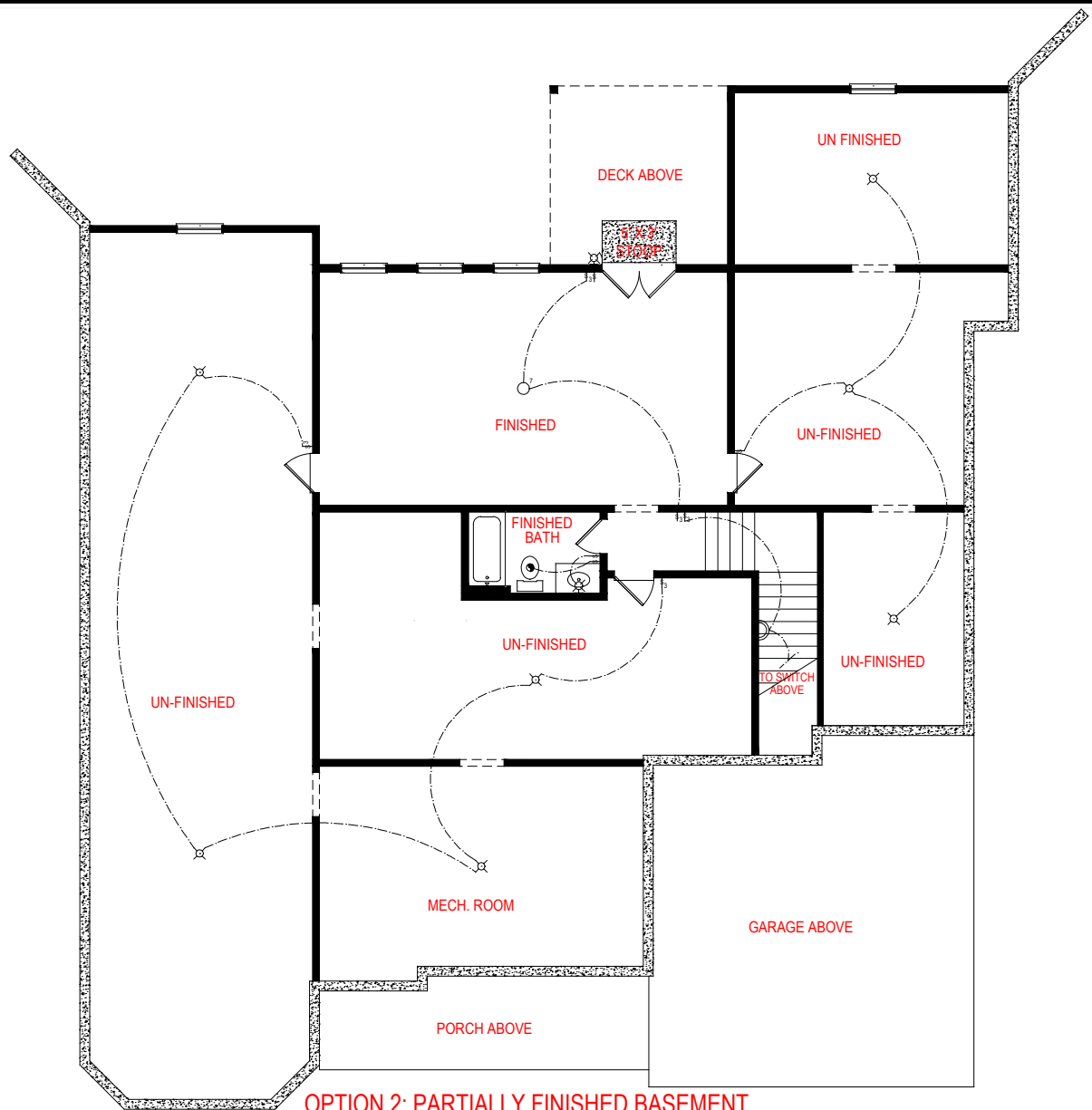
OPTION 1: UN-FINISHED BASEMENT

WOODBURY
SIDE ENTRY VERSION



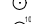

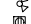

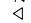
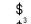
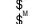







| SQUARE FOOTAGE: | |
|-----------------|----------------------|
| FIRST FLOOR: | 3,023 SQ. FT. |
| SECOND FLOOR: | 688 SQ. FT. |
| TOTAL: | 3,711 SQ. FT. |

*THE DRAWING(S) ON THIS PAGE ARE A GRAPHICAL REPRESENTATION ONLY. PLEASE CONSULT YOUR AGENT FOR SPECIFIC INFORMATION REGARDING THIS FLOOR PLAN. THE DESIGN OF THE FLOOR PLAN REPRESENTED IS SUBJECT TO CHANGE WITHOUT NOTICE.



OPTION 2: PARTIALLY FINISHED BASEMENT
529 SQ.FT.

- ELECTRICAL LEGEND**
-  CEILING LIGHT FIXTURE
 -  WALL LIGHT FIXTURE
 -  7" LED DISK
 -  10" LED DISK
 -  FLOOD LIGHT FIXTURE
 -  DUPLEX FLOOR OUTLET
 -  TELEPHONE
 -  TELEVISION
 -  SWITCH
 -  3-WAY SWITCH
 -  MOTION SENSOR SWITCH
 -  EXHAUST FAN
 -  EXHAUST FAN/LIGHT
 -  SCONCE LIGHT FIXTURE

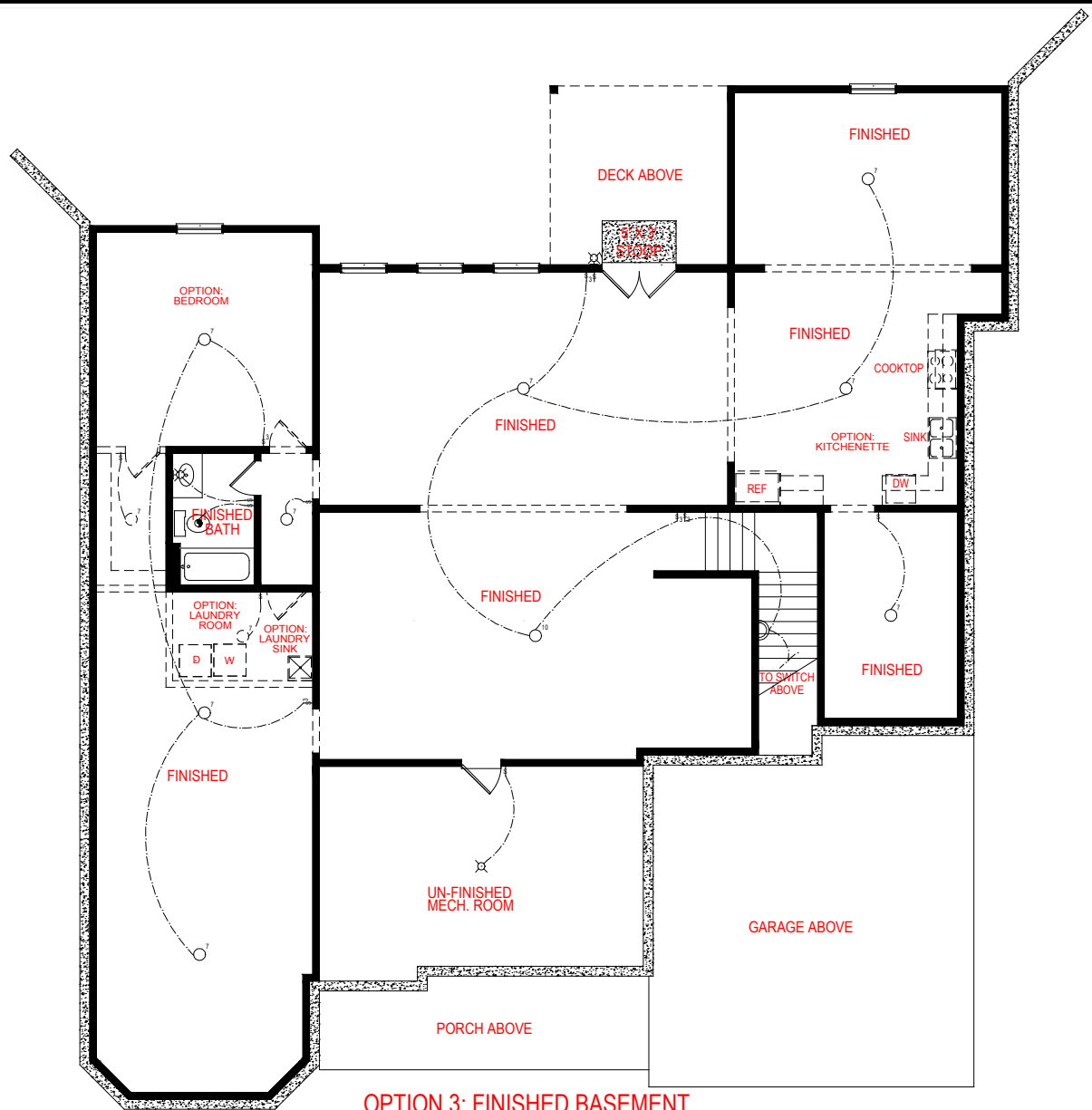
SQUARE FOOTAGE:

| | |
|---------------|----------------------|
| FIRST FLOOR: | 3,023 SQ. FT. |
| SECOND FLOOR: | 688 SQ. FT. |
| TOTAL: | 3,711 SQ. FT. |

WOODBURY
SIDE ENTRY VERSION



*THE DRAWING(S) ON THIS PAGE ARE A GRAPHICAL REPRESENTATION ONLY. PLEASE CONSULT YOUR AGENT FOR SPECIFIC INFORMATION REGARDING THIS FLOOR PLAN. THE DESIGN OF THE FLOOR PLAN REPRESENTED IS SUBJECT TO CHANGE WITHOUT NOTICE.



OPTION 3: FINISHED BASEMENT
2,506 SQ.FT.

- ELECTRICAL LEGEND**
- CEILING LIGHT FIXTURE
 - WALL LIGHT FIXTURE
 - 7" LED DISK
 - 10" LED DISK
 - FLOOD LIGHT FIXTURE
 - DUPLEX FLOOR OUTLET
 - TELEPHONE
 - TELEVISION
 - SWITCH
 - 3-WAY SWITCH
 - MOTION SENSOR SWITCH
 - EXHAUST FAN
 - EXHAUST FAN/LIGHT
 - SCONCE LIGHT FIXTURE

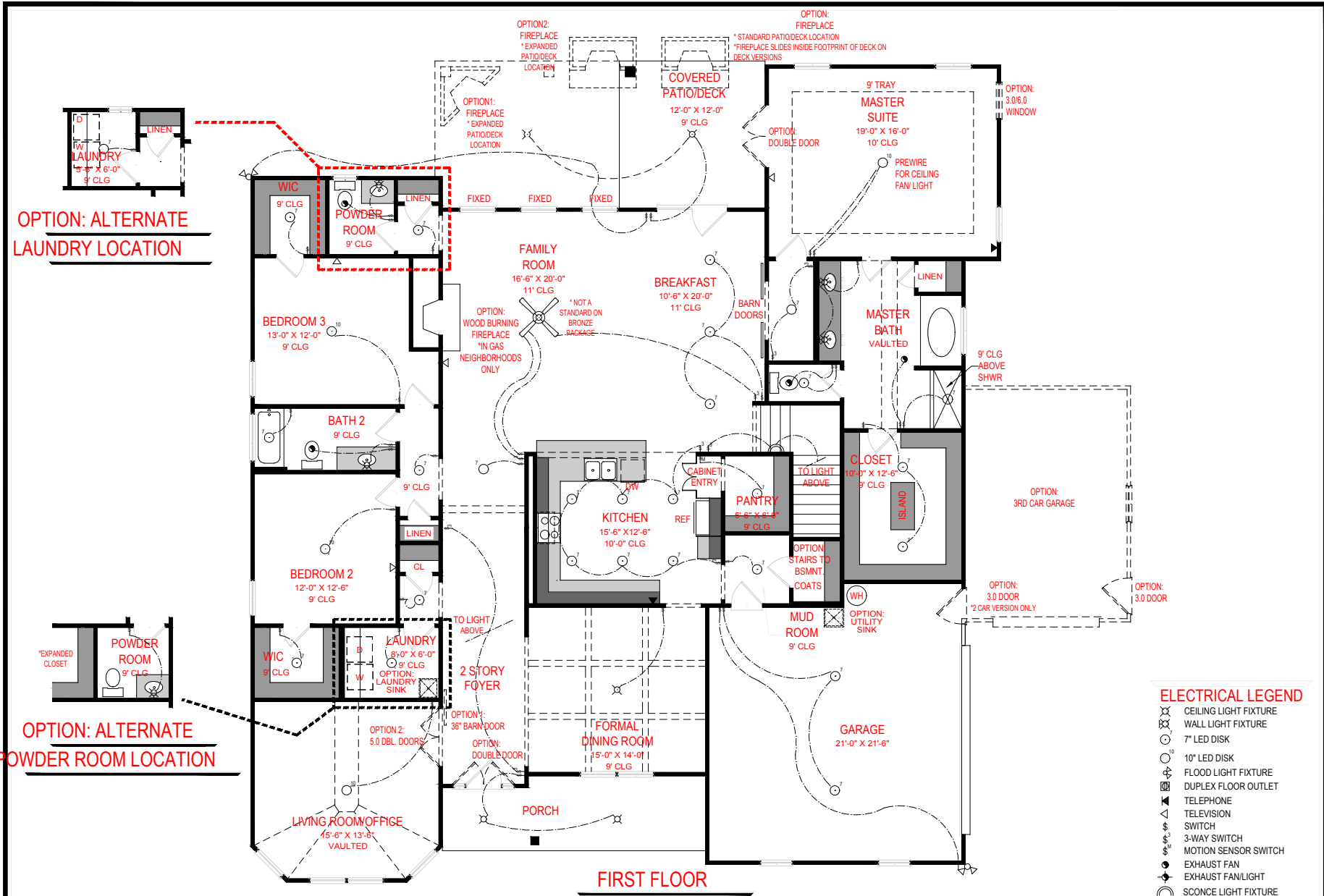
SQUARE FOOTAGE:

| | |
|---------------|----------------------|
| FIRST FLOOR: | 3,023 SQ. FT. |
| SECOND FLOOR: | 688 SQ. FT. |
| TOTAL: | 3,711 SQ. FT. |

WOODBURY
SIDE ENTRY VERSION



*THE DRAWING(S) ON THIS PAGE ARE A GRAPHICAL REPRESENTATION ONLY. PLEASE CONSULT YOUR AGENT FOR SPECIFIC INFORMATION REGARDING THIS FLOOR PLAN. THE DESIGN OF THE FLOOR PLAN REPRESENTED IS SUBJECT TO CHANGE WITHOUT NOTICE.



OPTION: ALTERNATE LAUNDRY LOCATION

OPTION: ALTERNATE POWDER ROOM LOCATION

- ELECTRICAL LEGEND**
- CEILING LIGHT FIXTURE
 - WALL LIGHT FIXTURE
 - 7" LED DISK
 - 10" LED DISK
 - FLOOD LIGHT FIXTURE
 - DUPLEX FLOOR OUTLET
 - TELEPHONE
 - TELEVISION
 - SWITCH
 - 3-WAY SWITCH
 - MOTION SENSOR SWITCH
 - EXHAUST FAN
 - EXHAUST FAN/LIGHT
 - SCONCE LIGHT FIXTURE

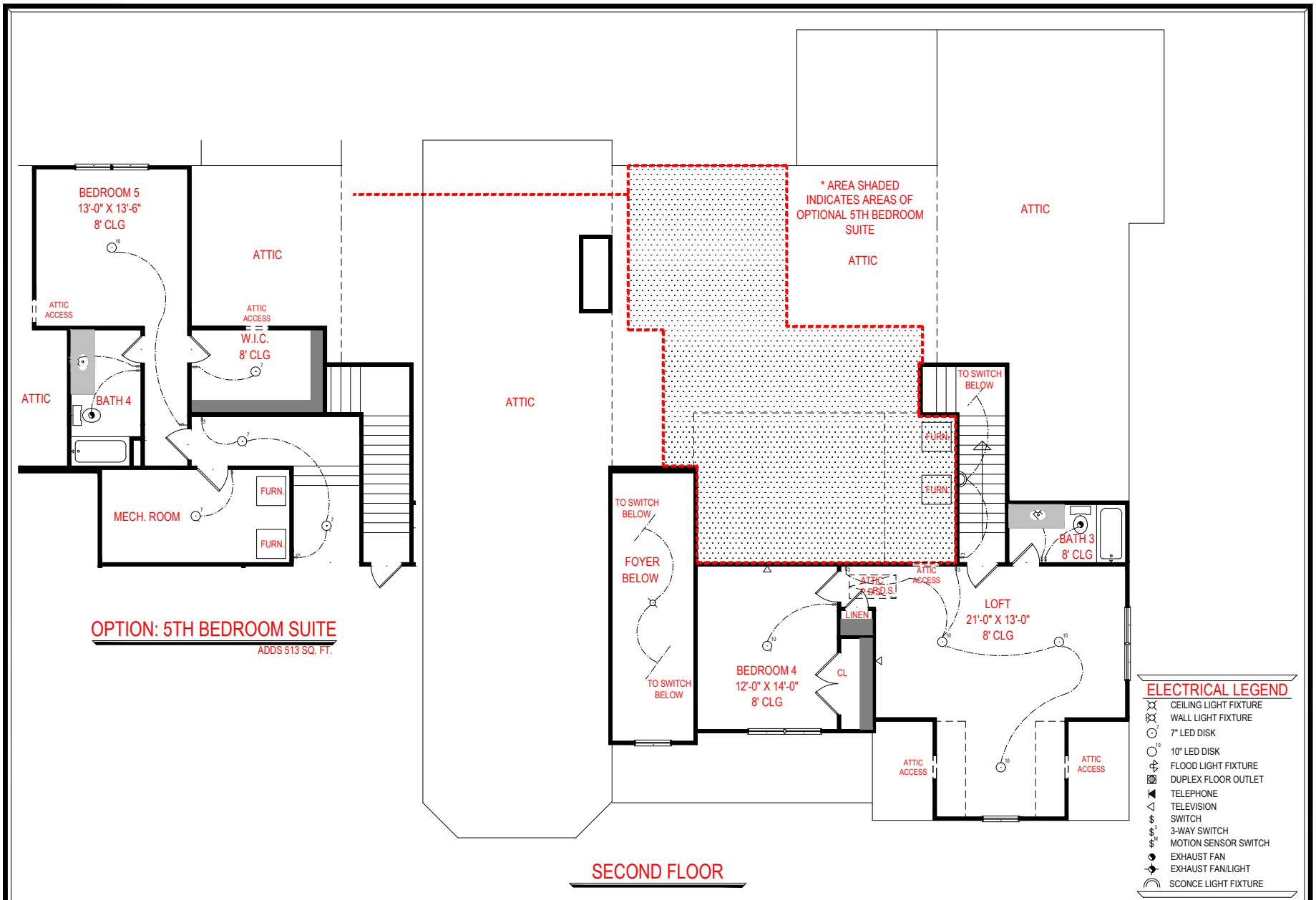
SQUARE FOOTAGE:
 FIRST FLOOR: 3,023 SQ. FT.
 SECOND FLOOR: 688 SQ. FT.
 TOTAL: 3,711 SQ. FT.

WOODBURY

SIDE ENTRY VERSION



*THE DRAWING(S) ON THIS PAGE ARE A GRAPHICAL REPRESENTATION ONLY. PLEASE CONSULT YOUR AGENT FOR SPECIFIC INFORMATION REGARDING THIS FLOOR PLAN. THE DESIGN OF THE FLOOR PLAN REPRESENTED IS SUBJECT TO CHANGE WITHOUT NOTICE.



OPTION: 5TH BEDROOM SUITE
 ADDS 513 SQ. FT.

SECOND FLOOR

- ELECTRICAL LEGEND**
- CEILING LIGHT FIXTURE
 - WALL LIGHT FIXTURE
 - 7" LED DISK
 - 10" LED DISK
 - FLOOD LIGHT FIXTURE
 - DUPLEX FLOOR OUTLET
 - TELEPHONE
 - TELEVISION
 - SWITCH
 - 3-WAY SWITCH
 - MOTION SENSOR SWITCH
 - EXHAUST FAN
 - EXHAUST FAN/LIGHT
 - SCONCE LIGHT FIXTURE

WOODBURY
 SIDE ENTRY VERSION



SQUARE FOOTAGE:

| | |
|---------------|----------------------|
| FIRST FLOOR: | 3,023 SQ. FT. |
| SECOND FLOOR: | 688 SQ. FT. |
| TOTAL: | 3,711 SQ. FT. |

*THE DRAWING(S) ON THIS PAGE ARE A GRAPHICAL REPRESENTATION ONLY. PLEASE CONSULT YOUR AGENT FOR SPECIFIC INFORMATION REGARDING THIS FLOOR PLAN. THE DESIGN OF THE FLOOR PLAN REPRESENTED IS SUBJECT TO CHANGE WITHOUT NOTICE.