

**FRONT ELEVATION - A VERSION**

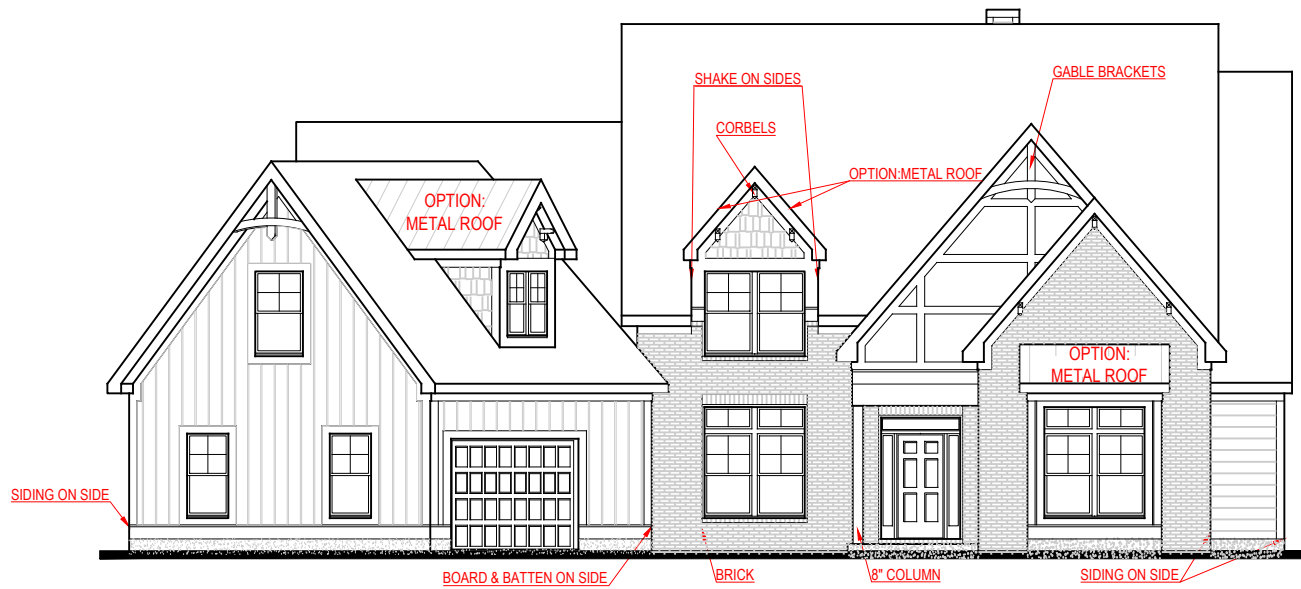
# BRYANT

30° VERSION



\*THE DRAWING(S) ON THIS PAGE ARE A GRAPHICAL REPRESENTATION ONLY. PLEASE CONSULT YOUR AGENT FOR SPECIFIC INFORMATION REGARDING THIS FLOOR PLAN. THE DESIGN OF THE FLOOR PLAN REPRESENTED IS SUBJECT TO CHANGE WITHOUT NOTICE.

SQUARE FOOTAGE:	
FIRST FLOOR:	2,975 SQ. FT.
SECOND FLOOR:	1,060 SQ. FT.
TOTAL:	3,635 SQ. FT.



**FRONT ELEVATION - B VERSION**

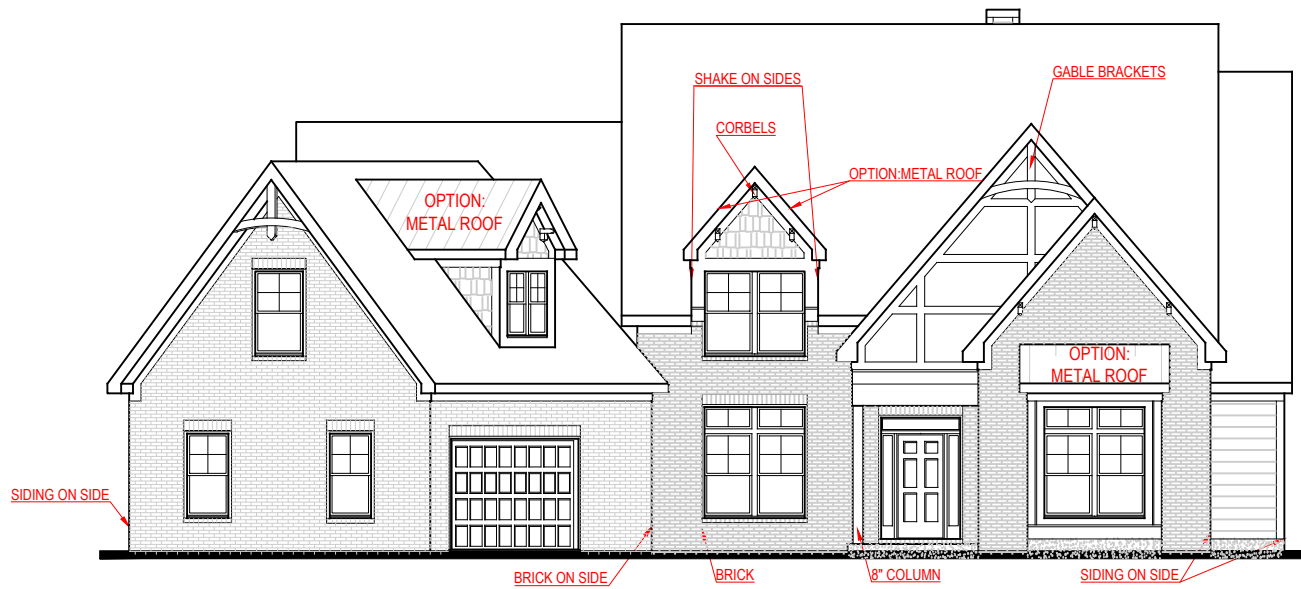
# BRYANT

30° VERSION



\*THE DRAWING(S) ON THIS PAGE ARE A GRAPHICAL REPRESENTATION ONLY. PLEASE CONSULT YOUR AGENT FOR SPECIFIC INFORMATION REGARDING THIS FLOOR PLAN. THE DESIGN OF THE FLOOR PLAN REPRESENTED IS SUBJECT TO CHANGE WITHOUT NOTICE.

SQUARE FOOTAGE:	
FIRST FLOOR:	2,975 SQ. FT.
SECOND FLOOR:	1,060 SQ. FT.
TOTAL:	3,635 SQ. FT.



**FRONT ELEVATION - D VERSION**

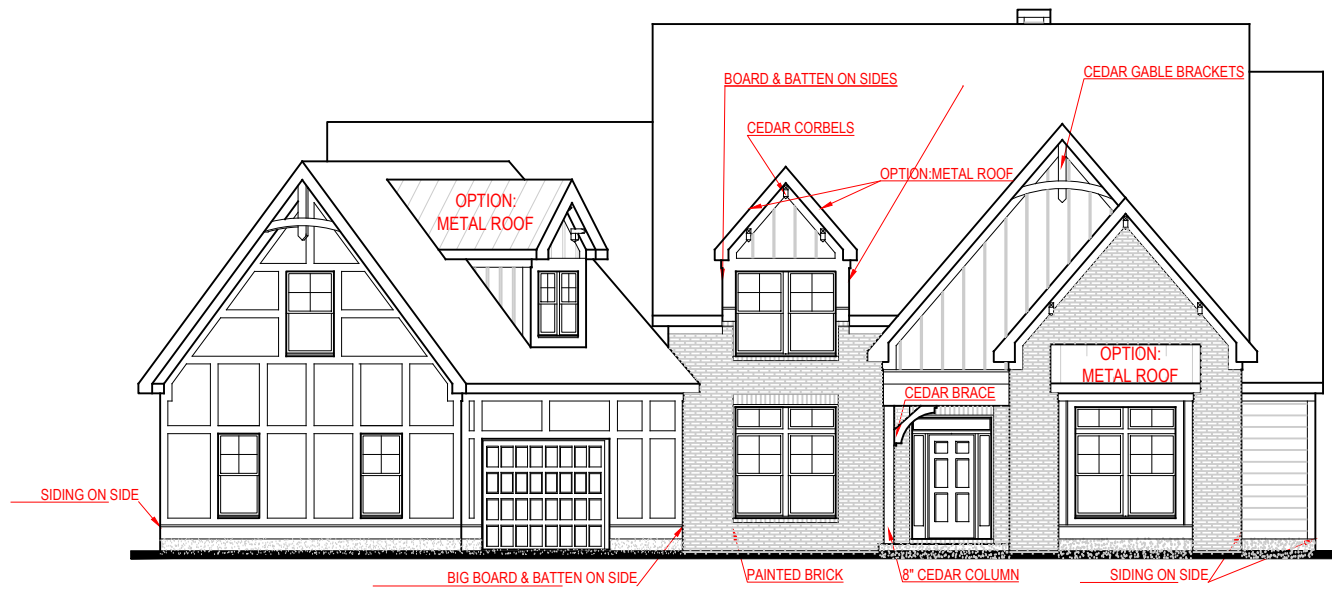
# BRYANT

30° VERSION



\*THE DRAWING(S) ON THIS PAGE ARE A GRAPHICAL REPRESENTATION ONLY. PLEASE CONSULT YOUR AGENT FOR SPECIFIC INFORMATION REGARDING THIS FLOOR PLAN. THE DESIGN OF THE FLOOR PLAN REPRESENTED IS SUBJECT TO CHANGE WITHOUT NOTICE.

SQUARE FOOTAGE:	
FIRST FLOOR:	2,975 SQ. FT.
SECOND FLOOR:	1,050 SQ. FT.
TOTAL:	3,635 SQ. FT.



**FRONT ELEVATION - F VERSION**

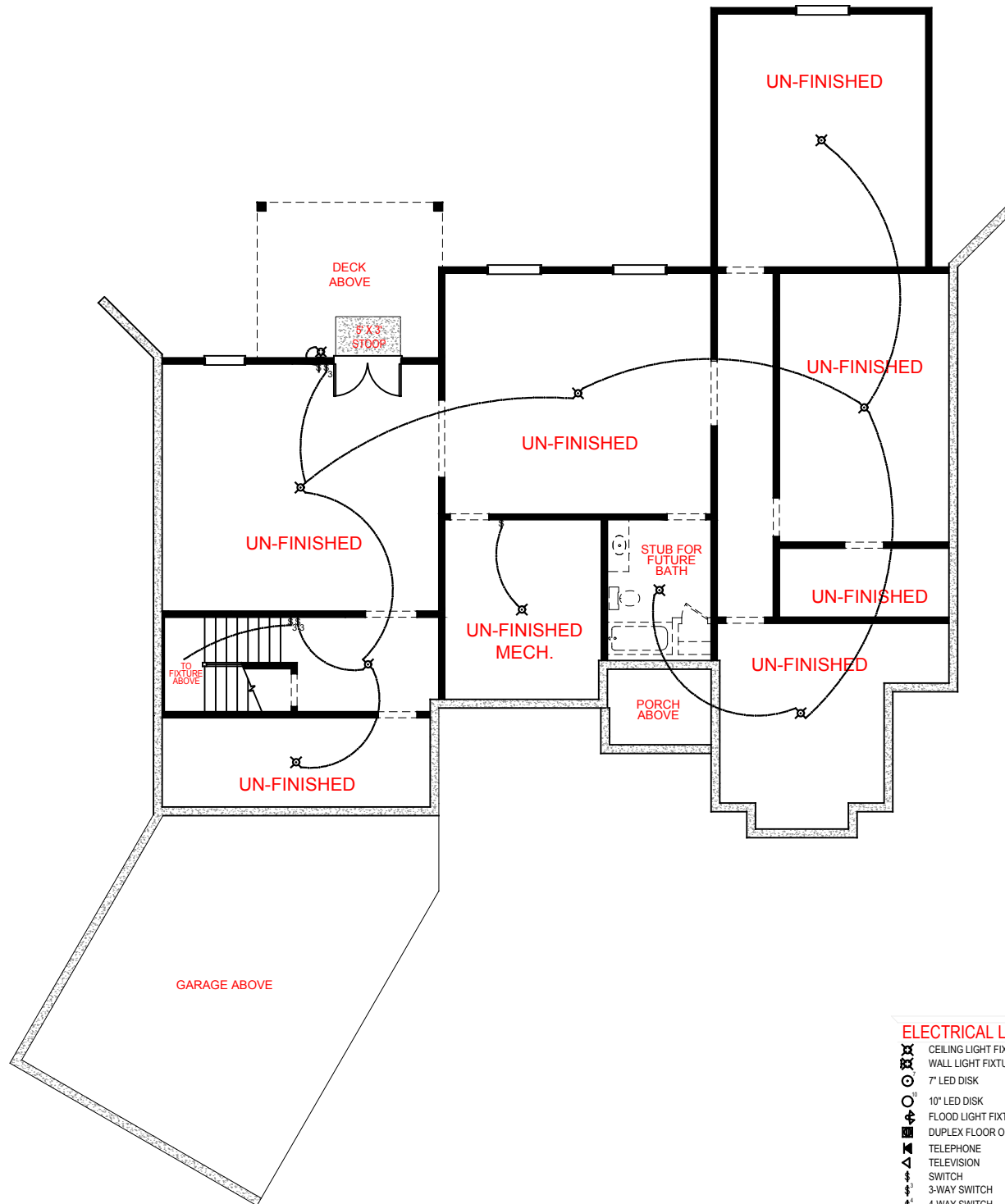
# BRYANT

30° VERSION










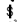
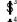






\*THE DRAWING(S) ON THIS PAGE ARE A GRAPHICAL REPRESENTATION ONLY. PLEASE CONSULT YOUR AGENT FOR SPECIFIC INFORMATION REGARDING THIS FLOOR PLAN. THE DESIGN OF THE FLOOR PLAN REPRESENTED IS SUBJECT TO CHANGE WITHOUT NOTICE.

SQUARE FOOTAGE:	
FIRST FLOOR:	2,975 SQ. FT.
SECOND FLOOR:	1,060 SQ. FT.
TOTAL:	3,635 SQ. FT.



**OPTION ONE: UN-FINISHED BASEMENT**

**ELECTRICAL LEGEND**

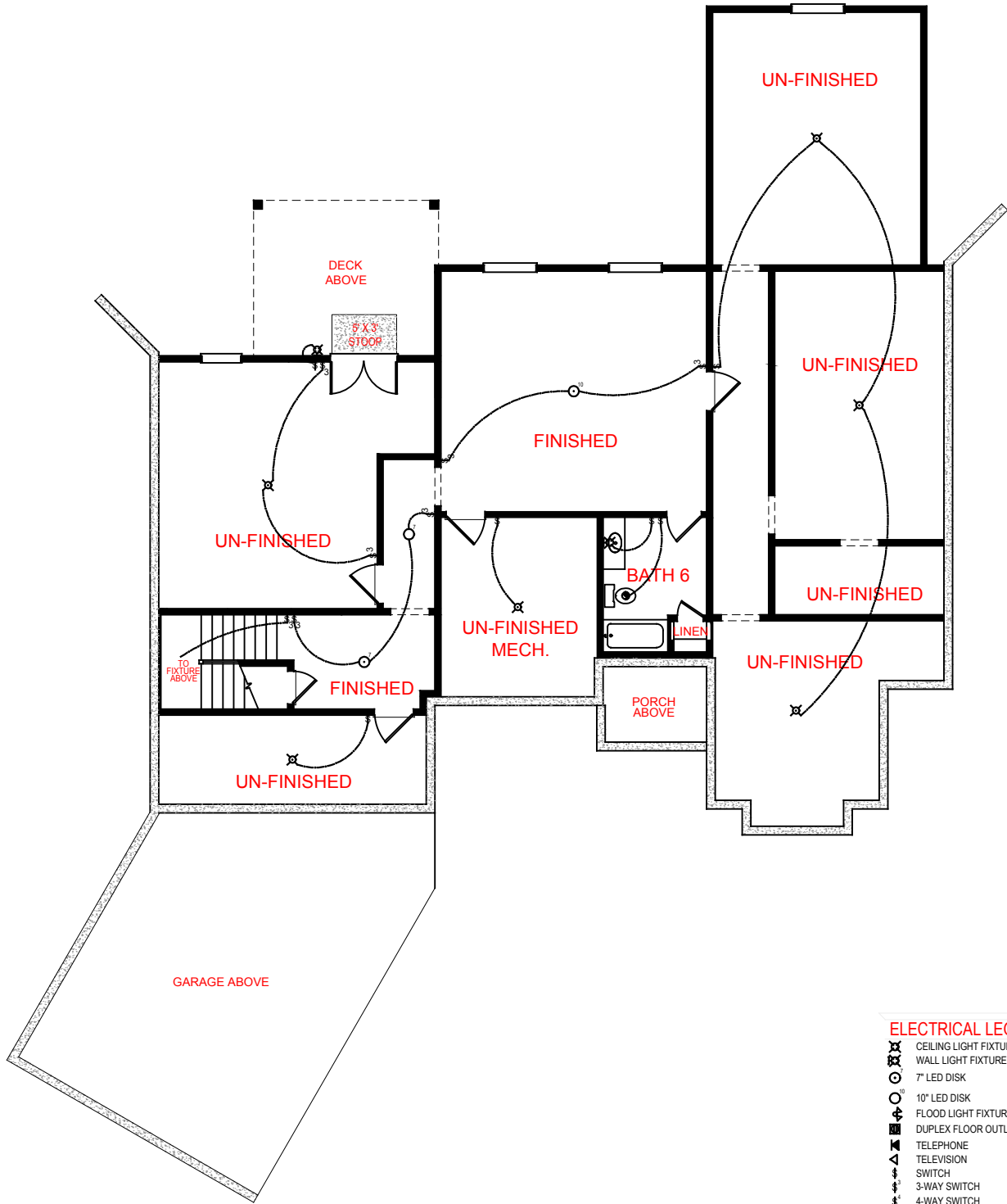
-  CEILING LIGHT FIXTURE
-  WALL LIGHT FIXTURE
-  7" LED DISK
-  10" LED DISK
-  FLOOD LIGHT FIXTURE
-  DUPLEX FLOOR OUTLET
-  TELEPHONE
-  TELEVISION
-  SWITCH
-  3-WAY SWITCH
-  4-WAY SWITCH
-  MOTION SENSOR SWITCH
-  EXHAUST FAN
-  EXHAUST FANLIGHT
-  SCONCE LIGHT FIXTURE

**BRYANT**  
30° VERSION



THE DRAWING(S) ON THIS PAGE ARE A GRAPHICAL REPRESENTATION ONLY. PLEASE CONSULT YOUR AGENT FOR SPECIFIC INFORMATION REGARDING THIS FLOOR PLAN. THE DESIGN OF THE FLOOR PLAN REPRESENTED IS SUBJECT TO CHANGE WITHOUT NOTICE.








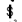
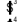






SQUARE FOOTAGE:	
FIRST FLOOR:	2,575 SQ. FT.
SECOND FLOOR:	1,060 SQ. FT.
<b>TOTAL:</b>	<b>3,635 SQ. FT.</b>



**OPTION TWO: PARTIALLY FINISHED BASEMENT**

688 SQ. FT. FINISHED

**ELECTRICAL LEGEND**

-  CEILING LIGHT FIXTURE
-  WALL LIGHT FIXTURE
-  7" LED DISK
-  10" LED DISK
-  FLOOD LIGHT FIXTURE
-  DUPLEX FLOOR OUTLET
-  TELEPHONE
-  TELEVISION
-  SWITCH
-  3-WAY SWITCH
-  4-WAY SWITCH
-  MOTION SENSOR SWITCH
-  EXHAUST FAN
-  EXHAUST FANLIGHT
-  SCONCE LIGHT FIXTURE

**BRYANT**

30° VERSION

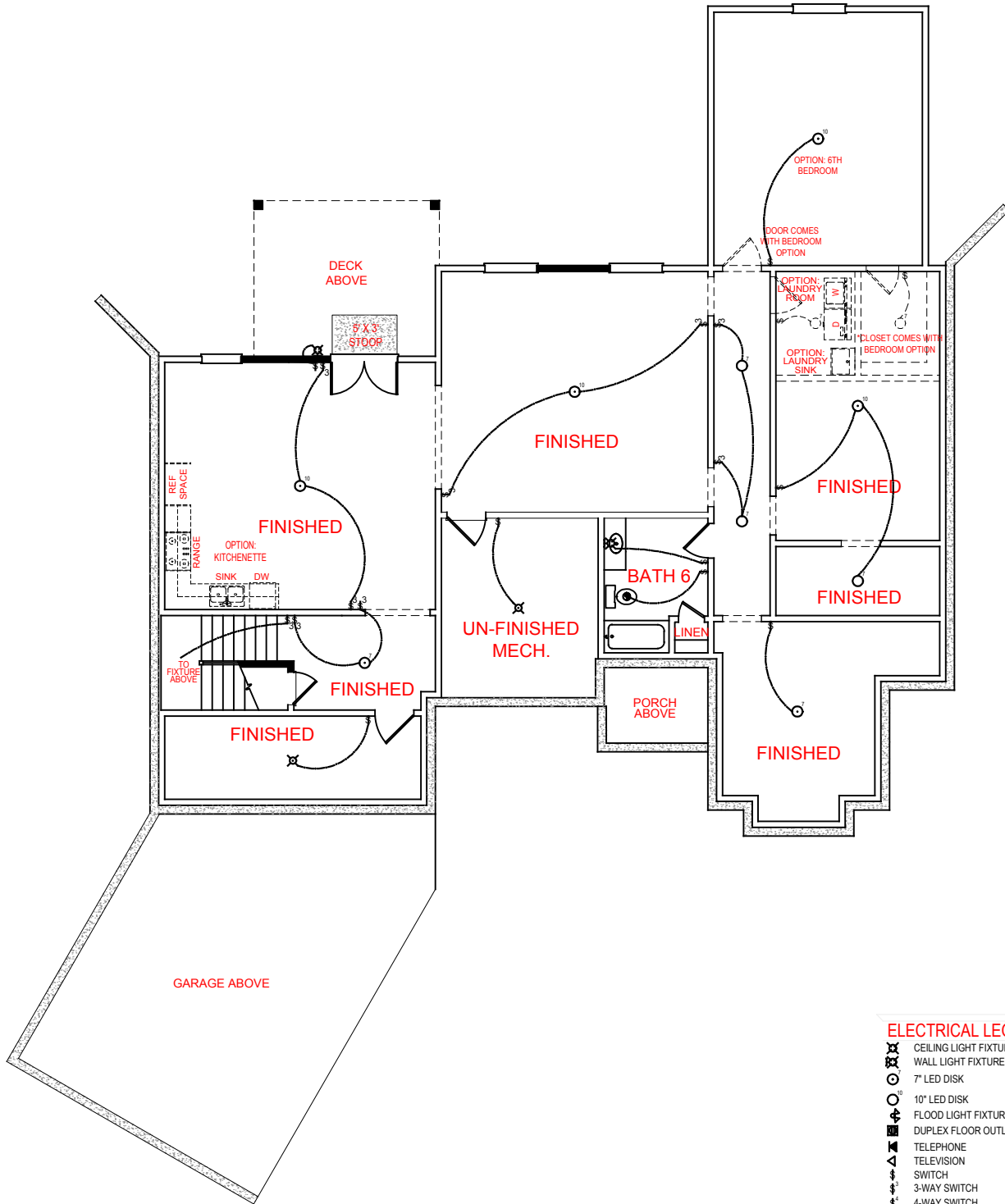


THE DRAWING(S) ON THIS PAGE ARE A GRAPHICAL REPRESENTATION ONLY. PLEASE CONSULT YOUR AGENT FOR SPECIFIC INFORMATION REGARDING THIS FLOOR PLAN. THE DESIGN OF THE FLOOR PLAN REPRESENTED IS SUBJECT TO CHANGE WITHOUT NOTICE.

**SQUARE FOOTAGE:**

FIRST FLOOR: 2,575 SQ. FT.  
SECOND FLOOR: 1,060 SQ. FT.








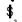






TOTAL: 3,635 SQ. FT.



**OPTION THREE: FINISHED BASEMENT**

2,227 SQ. FT. FINISHED

**ELECTRICAL LEGEND**

-  CEILING LIGHT FIXTURE
-  WALL LIGHT FIXTURE
-  7" LED DISK
-  10" LED DISK
-  FLOOD LIGHT FIXTURE
-  DUPLEX FLOOR OUTLET
-  TELEPHONE
-  TELEVISION
-  SWITCH
-  3-WAY SWITCH
-  4-WAY SWITCH
-  MOTION SENSOR SWITCH
-  EXHAUST FAN
-  EXHAUST FAN/LIGHT
-  SCONCE LIGHT FIXTURE

**BRYANT**

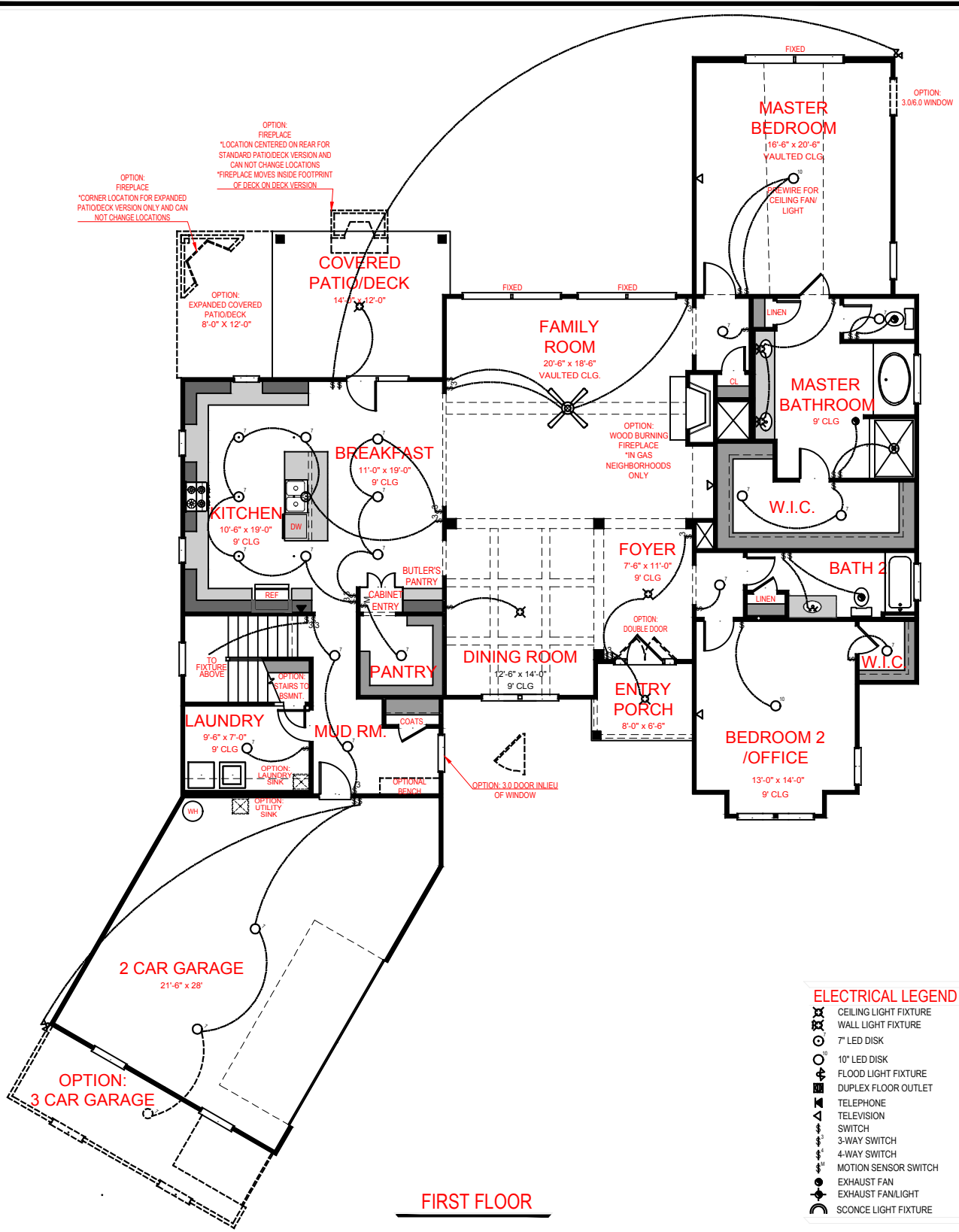
30° VERSION



**SQUARE FOOTAGE:**

FIRST FLOOR: 2,575 SQ. FT.  
 SECOND FLOOR: 1,060 SQ. FT.  
 TOTAL: 3,635 SQ. FT.

THE DRAWING(S) ON THIS PAGE ARE A GRAPHICAL REPRESENTATION ONLY. PLEASE CONSULT YOUR AGENT FOR SPECIFIC INFORMATION REGARDING THIS FLOOR PLAN. THE DESIGN OF THE FLOOR PLAN REPRESENTED IS SUBJECT TO CHANGE WITHOUT NOTICE.



**FIRST FLOOR**

**ELECTRICAL LEGEND**

- CEILING LIGHT FIXTURE
- WALL LIGHT FIXTURE
- 7" LED DISK
- 10" LED DISK
- FLOOD LIGHT FIXTURE
- DUPLEX FLOOR OUTLET
- TELEPHONE
- TELEVISION
- SWITCH
- 3-WAY SWITCH
- 4-WAY SWITCH
- MOTION SENSOR SWITCH
- EXHAUST FAN
- EXHAUST FAN/LIGHT
- SCONCE LIGHT FIXTURE

**BRYANT**  
30° VERSION

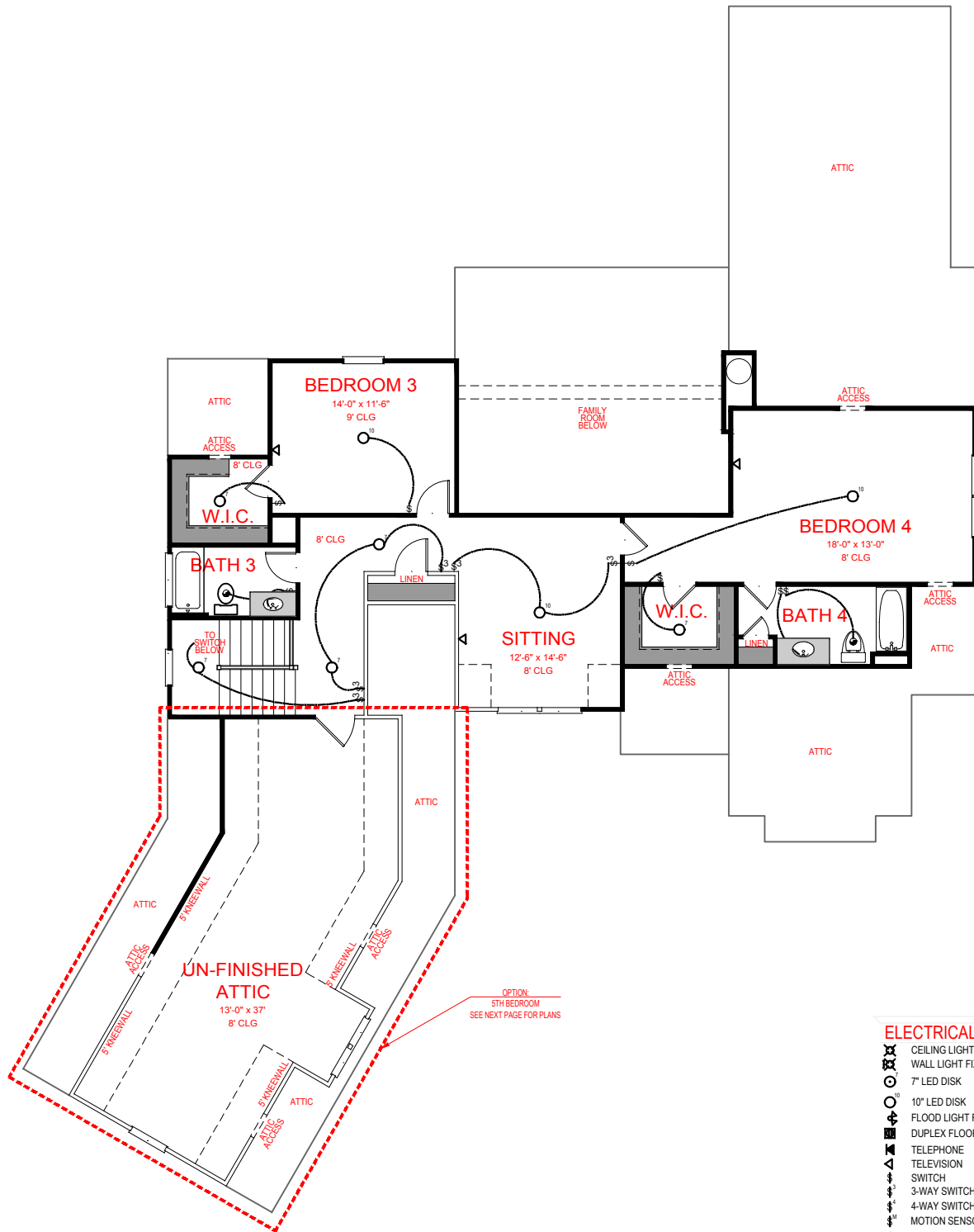


**SQUARE FOOTAGE:**

FIRST FLOOR:	2,575 SQ. FT.
SECOND FLOOR:	1,060 SQ. FT.
<b>TOTAL:</b>	<b>3,635 SQ. FT.</b>





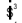







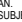
\*THE DRAWING(S) ON THIS PAGE ARE A GRAPHICAL REPRESENTATION ONLY. PLEASE CONSULT YOUR AGENT FOR SPECIFIC INFORMATION REGARDING THIS FLOOR PLAN. THE DESIGN OF THE FLOOR PLAN REPRESENTED IS SUBJECT TO CHANGE WITHOUT NOTICE.





**SECOND FLOOR**

**ELECTRICAL LEGEND**

-  CEILING LIGHT FIXTURE
-  WALL LIGHT FIXTURE
-  7' LED DISK
-  10' LED DISK
-  FLOOD LIGHT FIXTURE
-  DUPLEX FLOOR OUTLET
-  TELEPHONE
-  TELEVISION
-  SWITCH
-  3-WAY SWITCH
-  4-WAY SWITCH
-  MOTION SENSOR SWITCH
-  EXHAUST FAN
-  EXHAUST FAN/LIGHT
-  SCONCE LIGHT FIXTURE

OPTION  
5TH BEDROOM  
SEE NEXT PAGE FOR PLANS

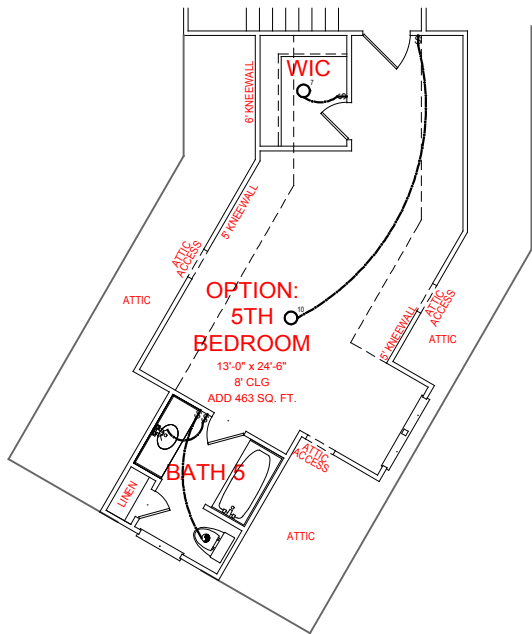
**BRYANT**  
30° VERSION

**JEFF LINDSEY COMMUNITIES**  
*Live your dream.*

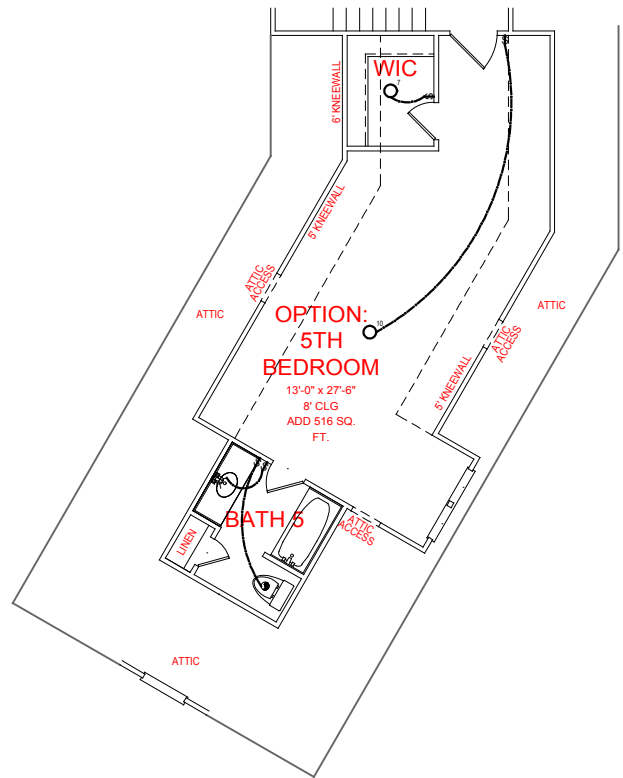
**SQUARE FOOTAGE:**

FIRST FLOOR:	2,575 SQ. FT.
SECOND FLOOR:	1,060 SQ. FT.
<b>TOTAL:</b>	<b>3,635 SQ. FT.</b>

THE DRAWING(S) ON THIS PAGE ARE A GRAPHICAL REPRESENTATION ONLY. PLEASE CONSULT YOUR AGENT FOR SPECIFIC INFORMATION REGARDING THIS FLOOR PLAN. THE DESIGN OF THE FLOOR PLAN REPRESENTED IS SUBJECT TO CHANGE WITHOUT NOTICE.




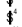
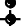




**TWO CAR VERSION 5TH BEDROOM**



**THREE CAR VERSION 5TH BEDROOM**

**ELECTRICAL LEGEND**

-  CEILING LIGHT FIXTURE
-  WALL LIGHT FIXTURE
- 7" LED DISK
- 10" LED DISK
-  FLOOD LIGHT FIXTURE
-  DUPLEX FLOOR OUTLET
-  TELEPHONE
-  TELEVISION
-  SWITCH
-  3-WAY SWITCH
-  4-WAY SWITCH
-  MOTION SENSOR SWITCH
-  EXHAUST FAN
-  EXHAUST FAN/LIGHT
-  SCONCE LIGHT FIXTURE

**BRYANT**  
30° VERSION



THE DRAWING(S) ON THIS PAGE ARE A GRAPHICAL REPRESENTATION ONLY. PLEASE CONSULT YOUR AGENT FOR SPECIFIC INFORMATION REGARDING THIS FLOOR PLAN. THE DESIGN OF THE FLOOR PLAN REPRESENTED IS SUBJECT TO CHANGE WITHOUT NOTICE.

SQUARE FOOTAGE:	
FIRST FLOOR:	2,575 SQ. FT.
SECOND FLOOR:	1,060 SQ. FT.
<b>TOTAL:</b>	<b>3,635 SQ. FT.</b>