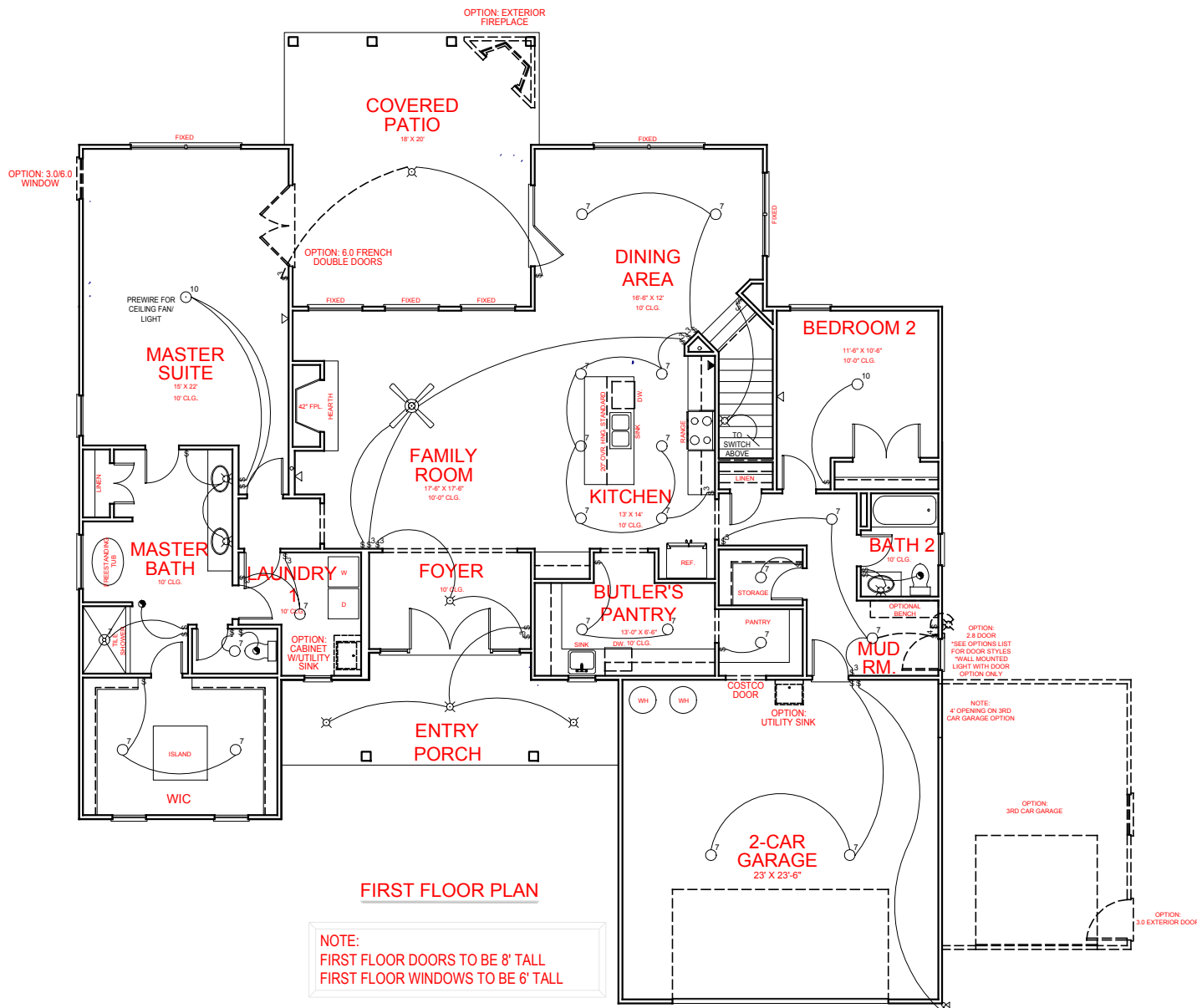


HARPER
MILL FARMS

**JEFF LINDSEY
COMMUNITIES**
Live your dream.

*THE DRAWING(S) ON THIS PAGE ARE A GRAPHICAL REPRESENTATION ONLY. PLEASE CONSULT YOUR AGENT FOR SPECIFIC INFORMATION REGARDING THIS FLOOR PLAN. THE DESIGN OF THE FLOOR PLAN REPRESENTED IS SUBJECT TO CHANGE WITHOUT NOTICE.

SQUARE FOOTAGE:
FIRST FLOOR: 2,302
SECOND FLOOR: 1,268
TOTAL: 3,570



ELECTRICAL LEGEND

- CEILING LIGHT FIXTURE
- WALL LIGHT FIXTURE
- 7" LED DISK
- 10" LED DISK
- CEILING FAN
- FLOOD LIGHT FIXTURE
- DUPLEX FLOOR OUTLET
- NETWORK
- SWITCH
- 3-WAY SWITCH
- 4-WAY SWITCH
- MOTION SENSOR SWITCH
- EXHAUST FAN
- EXHAUST FAN/LIGHT
- SCONCE LIGHT FIXTURE

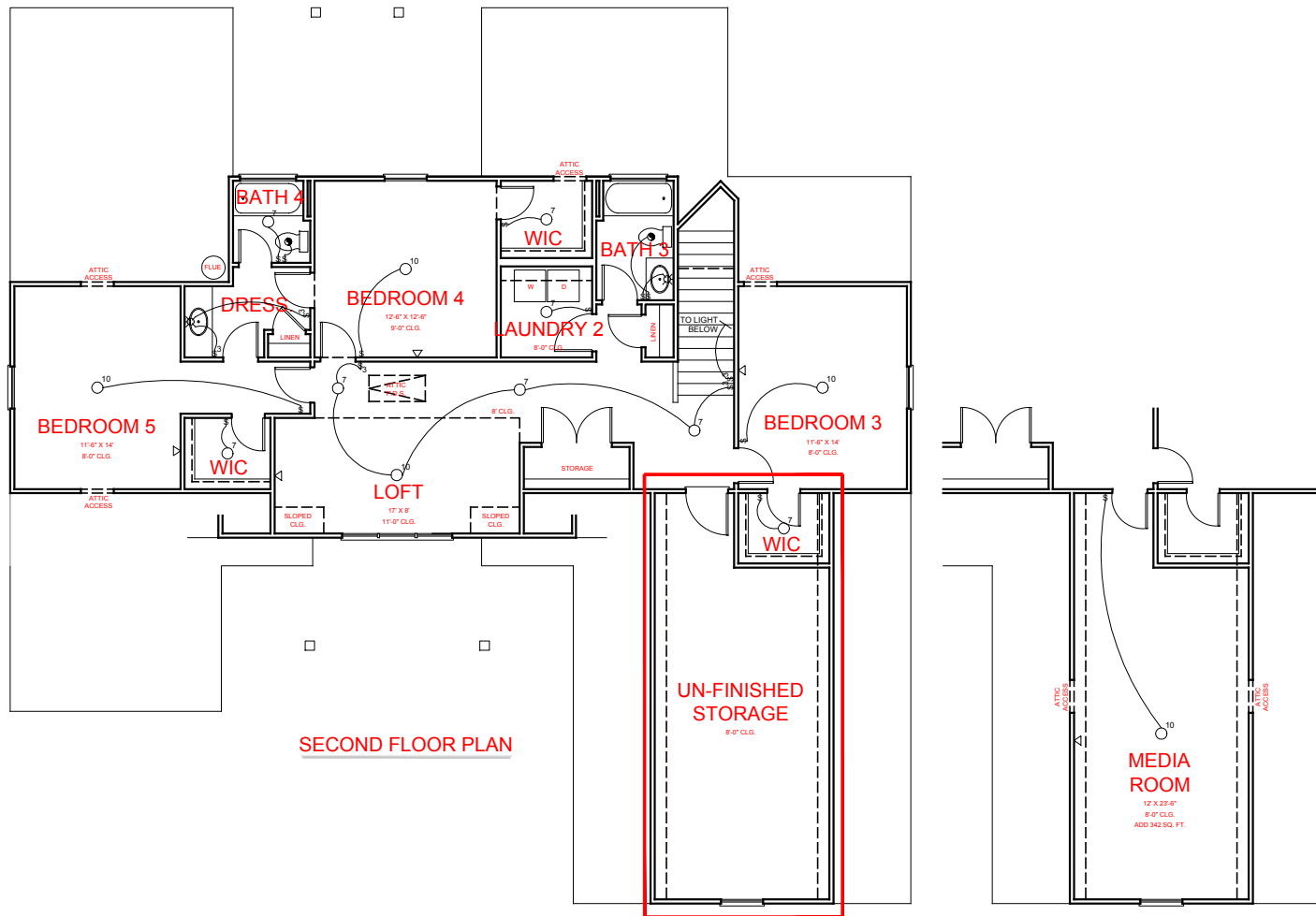
HARPER
MILL FARMS

JEFF LINDSEY COMMUNITIES
Live your dream.

SQUARE FOOTAGE:

FIRST FLOOR:	2,302
SECOND FLOOR:	1,268
TOTAL:	3,570

*THE DRAWING(S) ON THIS PAGE ARE A GRAPHICAL REPRESENTATION ONLY. PLEASE CONSULT YOUR AGENT FOR SPECIFIC INFORMATION REGARDING THIS FLOOR PLAN. THE DESIGN OF THE FLOOR PLAN REPRESENTED IS SUBJECT TO CHANGE WITHOUT NOTICE.



SECOND FLOOR PLAN

OPTION: MEDIA ROOM

- ELECTRICAL LEGEND**
- CEILING LIGHT FIXTURE
 - WALL LIGHT FIXTURE
 - 7" LED DISK
 - 10" LED DISK
 - CEILING FAN
 - FLOOD LIGHT FIXTURE
 - DUPLEX FLOOR OUTLET
 - NETWORK
 - NETWORK/CABLE SWITCH
 - 3-WAY SWITCH
 - 4-WAY SWITCH
 - MOTION SENSOR SWITCH
 - EXHAUST FAN
 - EXHAUST FAN/LIGHT
 - SCONCE LIGHT FIXTURE

HARPER
MILL FARMS

JEFF LINDSEY COMMUNITIES
Live your dream.

*THE DRAWING(S) ON THIS PAGE ARE A GRAPHICAL REPRESENTATION ONLY. PLEASE CONSULT YOUR AGENT FOR SPECIFIC INFORMATION REGARDING THIS FLOOR PLAN. THE DESIGN OF THE FLOOR PLAN REPRESENTED IS SUBJECT TO CHANGE WITHOUT NOTICE.

SQUARE FOOTAGE:

FIRST FLOOR:	2,302
SECOND FLOOR:	1,268
TOTAL:	3,570