



FRONT ELEVATION- A VERSION

BENSON
SIDE ENTRY VERSION



*THE DRAWING(S) ON THIS PAGE ARE A GRAPHICAL REPRESENTATION ONLY. PLEASE CONSULT YOUR AGENT FOR SPECIFIC INFORMATION REGARDING THIS FLOOR PLAN. THE DESIGN OF THE FLOOR PLAN REPRESENTED IS SUBJECT TO CHANGE WITHOUT NOTICE.

| SQUARE FOOTAGE: | |
|-----------------|-------|
| FIRST FLOOR: | 1,836 |
| SECOND FLOOR: | 475 |
| TOTAL: | 2,311 |



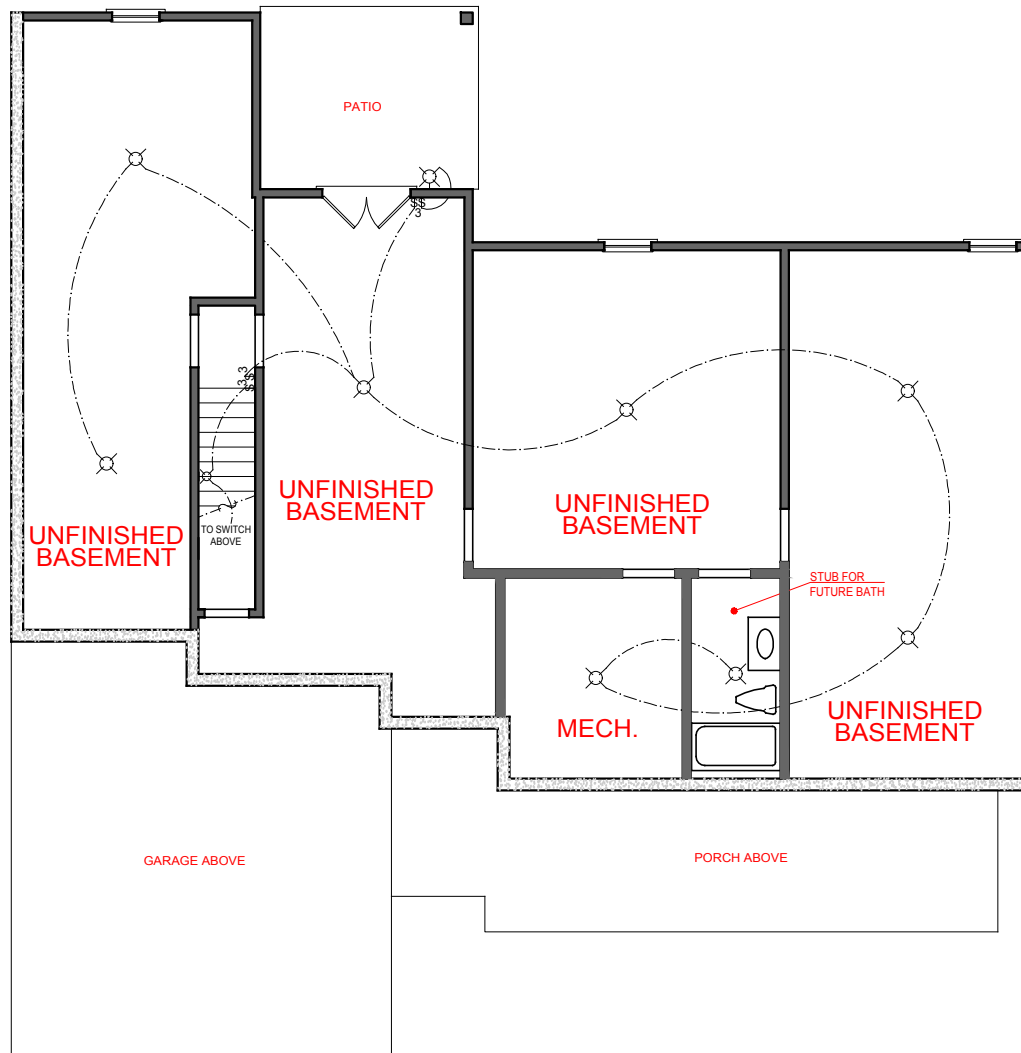
FRONT ELEVATION- B VERSION

BENSON
SIDE ENTRY VERSION



*THE DRAWING(S) ON THIS PAGE ARE A GRAPHICAL REPRESENTATION ONLY. PLEASE CONSULT YOUR AGENT FOR SPECIFIC INFORMATION REGARDING THIS FLOOR PLAN. THE DESIGN OF THE FLOOR PLAN REPRESENTED IS SUBJECT TO CHANGE WITHOUT NOTICE.

| SQUARE FOOTAGE: | |
|-----------------|-------|
| FIRST FLOOR: | 1,836 |
| SECOND FLOOR: | 475 |
| TOTAL: | 2,311 |



OPTION ONE: UN-FINISHED BASEMENT

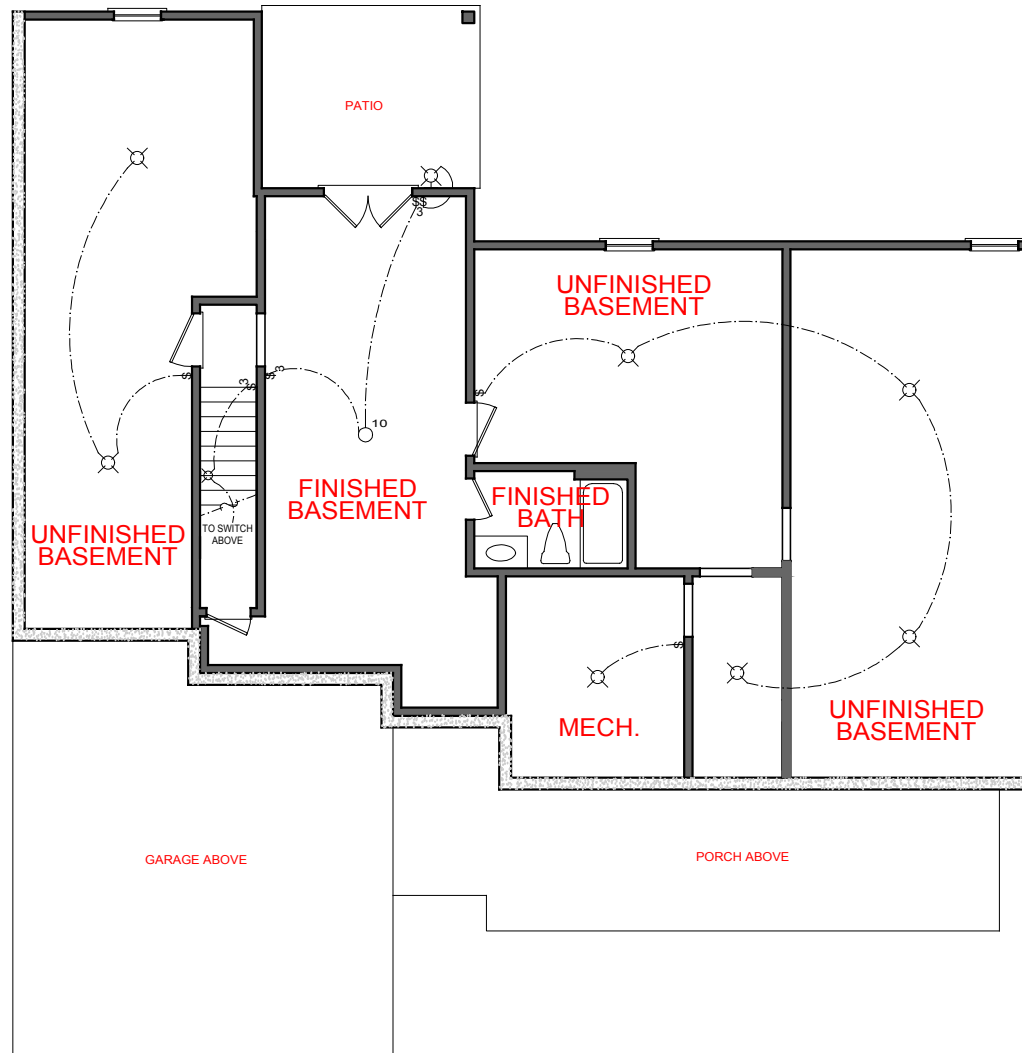
| ELECTRICAL LEGEND | |
|-------------------|-----------------------|
| | CEILING LIGHT FIXTURE |
| | WALL LIGHT FIXTURE |
| | 7" LED DISK |
| | 10" LED DISK |
| | CEILING FAN |
| | FLOOD LIGHT FIXTURE |
| | DUPLEX FLOOR OUTLET |
| | TELEPHONE |
| | NETWORK/CABLE |
| | SWITCH |
| | 3-WAY SWITCH |
| | 4-WAY SWITCH |
| | MOTION SENSOR SWITCH |
| | EXHAUST FAN |
| | EXHAUST FAN/LIGHT |
| | SCONCE LIGHT FIXTURE |

BENSON



*THE DRAWING(S) ON THIS PAGE ARE A GRAPHICAL REPRESENTATION ONLY. PLEASE CONSULT YOUR AGENT FOR SPECIFIC INFORMATION REGARDING THIS FLOOR PLAN. THE DESIGN OF THE FLOOR PLAN REPRESENTED IS SUBJECT TO CHANGE WITHOUT NOTICE.

| SQUARE FOOTAGE: | |
|-----------------|-------|
| FIRST FLOOR: | 1,836 |
| SECOND FLOOR: | 475 |
| TOTAL: | 2,311 |



OPTION TWO: PARTIALLY FINISHED BASEMENT
ADD 400 SQ.FT.

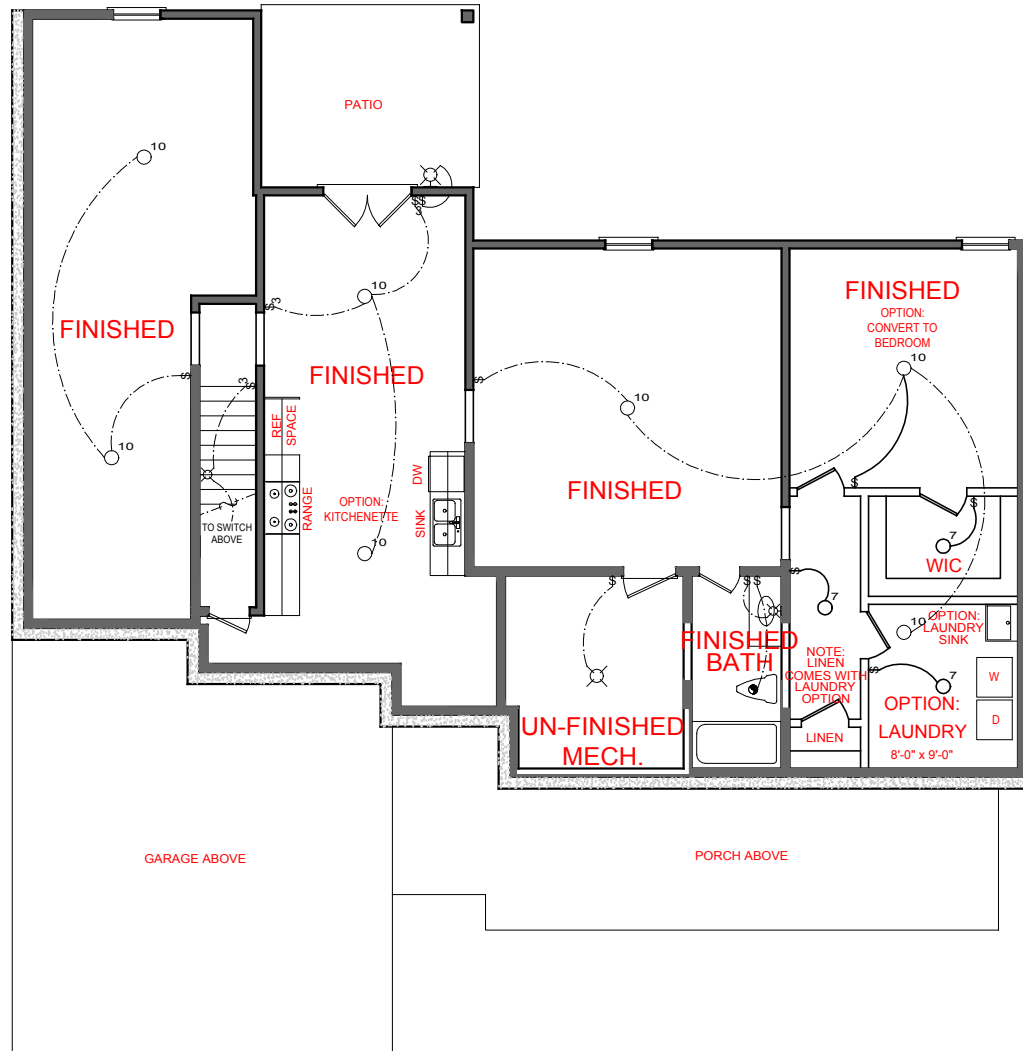
| ELECTRICAL LEGEND | |
|-------------------|-----------------------|
| | CEILING LIGHT FIXTURE |
| | WALL LIGHT FIXTURE |
| | 7" LED DISK |
| | 10" LED DISK |
| | CEILING FAN |
| | FLOOD LIGHT FIXTURE |
| | DUPLEX FLOOR OUTLET |
| | TELEPHONE |
| | NETWORK/CABLE |
| | SWITCH |
| | 3-WAY SWITCH |
| | 4-WAY SWITCH |
| | MOTION SENSOR SWITCH |
| | EXHAUST FAN |
| | EXHAUST FAN/LIGHT |
| | SCONCE LIGHT FIXTURE |

BENSON



*THE DRAWING(S) ON THIS PAGE ARE A GRAPHICAL REPRESENTATION ONLY. PLEASE CONSULT YOUR AGENT FOR SPECIFIC INFORMATION REGARDING THIS FLOOR PLAN. THE DESIGN OF THE FLOOR PLAN REPRESENTED IS SUBJECT TO CHANGE WITHOUT NOTICE.

| SQUARE FOOTAGE: | |
|-----------------|-------|
| FIRST FLOOR: | 1,836 |
| SECOND FLOOR: | 475 |
| TOTAL: | 2,311 |



OPTION THREE: FINISHED BASEMENT
ADD 1,600 SQ.FT.

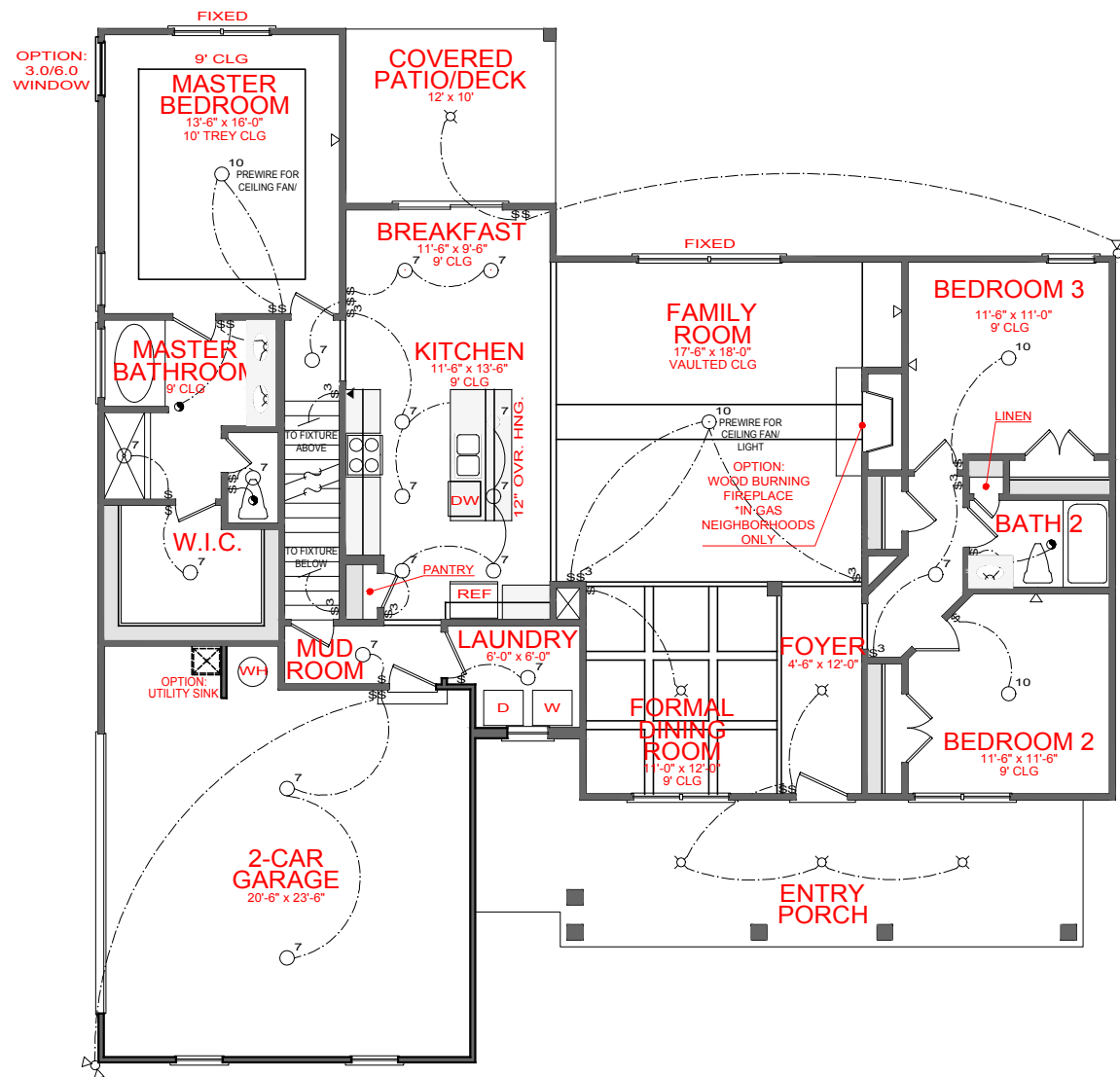
| ELECTRICAL LEGEND | |
|-------------------|-----------------------|
| | CEILING LIGHT FIXTURE |
| | WALL LIGHT FIXTURE |
| | 7" LED DISK |
| | 10" LED DISK |
| | CEILING FAN |
| | FLOOD LIGHT FIXTURE |
| | DUPLEX FLOOR OUTLET |
| | TELEPHONE |
| | NETWORK/CABLE |
| | SWITCH |
| | 3-WAY SWITCH |
| | 4-WAY SWITCH |
| | MOTION SENSOR SWITCH |
| | EXHAUST FAN |
| | EXHAUST FAN/LIGHT |
| | SCONCE LIGHT FIXTURE |

BENSON



*THE DRAWING(S) ON THIS PAGE ARE A GRAPHICAL REPRESENTATION ONLY. PLEASE CONSULT YOUR AGENT FOR SPECIFIC INFORMATION REGARDING THIS FLOOR PLAN. THE DESIGN OF THE FLOOR PLAN REPRESENTED IS SUBJECT TO CHANGE WITHOUT NOTICE.

| SQUARE FOOTAGE: | |
|-----------------|-------|
| FIRST FLOOR: | 1,836 |
| SECOND FLOOR: | 475 |
| TOTAL: | 2,311 |



FIRST FLOOR PLAN

BENSON

BASEMENT SIDE ENTRY VERSION

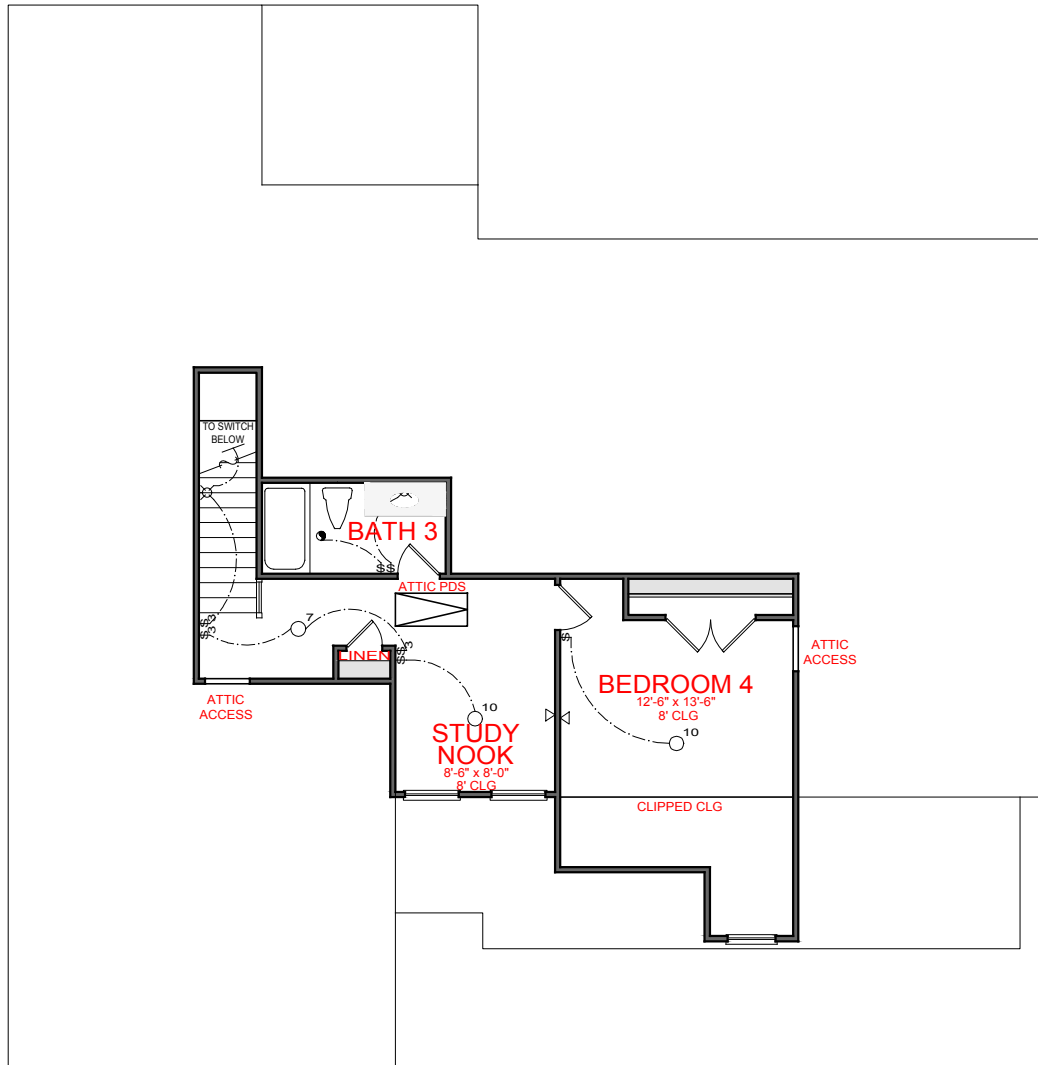


| ELECTRICAL LEGEND | |
|-------------------|-----------------------|
| | CEILING LIGHT FIXTURE |
| | WALL LIGHT FIXTURE |
| | 7" LED DISK |
| | 10" LED DISK |
| | CEILING FAN |
| | FLOOD LIGHT FIXTURE |
| | DUPLEX FLOOR OUTLET |
| | TELEPHONE |
| | NETWORK/CABLE |
| | SWITCH |
| | 3-WAY SWITCH |
| | 4-WAY SWITCH |
| | MOTION SENSOR SWITCH |
| | EXHAUST FAN |
| | EXHAUST FAN/LIGHT |
| | SCONCE LIGHT FIXTURE |

SQUARE FOOTAGE:

| | |
|---------------|-------|
| FIRST FLOOR: | 1,836 |
| SECOND FLOOR: | 475 |
| TOTAL: | 2,311 |

*THE DRAWING(S) ON THIS PAGE ARE A GRAPHICAL REPRESENTATION ONLY. PLEASE CONSULT YOUR AGENT FOR SPECIFIC INFORMATION REGARDING THIS FLOOR PLAN. THE DESIGN OF THE FLOOR PLAN REPRESENTED IS SUBJECT TO CHANGE WITHOUT NOTICE.



SECOND FLOOR PLAN

| ELECTRICAL LEGEND | |
|-------------------|-----------------------|
| | CEILING LIGHT FIXTURE |
| | WALL LIGHT FIXTURE |
| | 7" LED DISK |
| | 10" LED DISK |
| | CEILING FAN |
| | FLOOD LIGHT FIXTURE |
| | DUPLEX FLOOR OUTLET |
| | TELEPHONE |
| | NETWORK/CABLE |
| | SWITCH |
| | 3-WAY SWITCH |
| | 4-WAY SWITCH |
| | MOTION SENSOR SWITCH |
| | EXHAUST FAN |
| | EXHAUST FAN/LIGHT |
| | SCONCE LIGHT FIXTURE |

BENSON



*THE DRAWING(S) ON THIS PAGE ARE A GRAPHICAL REPRESENTATION ONLY. PLEASE CONSULT YOUR AGENT FOR SPECIFIC INFORMATION REGARDING THIS FLOOR PLAN. THE DESIGN OF THE FLOOR PLAN REPRESENTED IS SUBJECT TO CHANGE WITHOUT NOTICE.

| SQUARE FOOTAGE: | |
|-----------------|-------|
| FIRST FLOOR: | 1,836 |
| SECOND FLOOR: | 475 |
| TOTAL: | 2,311 |