

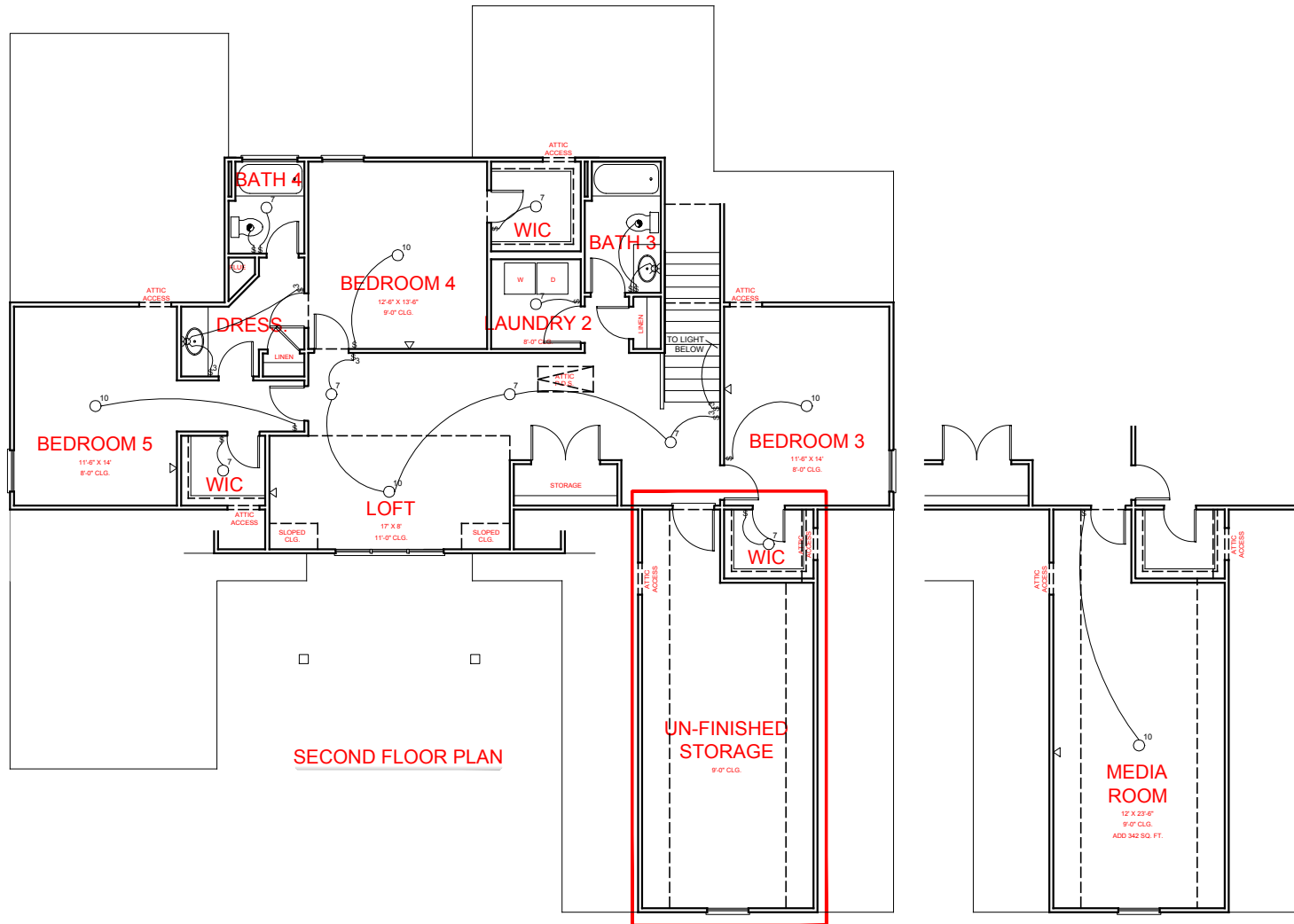
HARPER
MILL FARMS

JEFF LINDSEY
COMMUNITIES
Live your dream.

*THE DRAWING(S) ON THIS PAGE ARE A GRAPHICAL REPRESENTATION ONLY. PLEASE CONSULT YOUR AGENT FOR SPECIFIC INFORMATION REGARDING THIS FLOOR PLAN. THE DESIGN OF THE FLOOR PLAN REPRESENTED IS SUBJECT TO CHANGE WITHOUT NOTICE.

SQUARE FOOTAGE:
FIRST FLOOR: 2,465
SECOND FLOOR: 1,367
TOTAL: 3,832

*THE DRAWING(S) ON THIS PAGE ARE A GRAPHICAL REPRESENTATION ONLY. PLEASE CONSULT YOUR AGENT FOR SPECIFIC INFORMATION REGARDING THIS FLOOR PLAN. THE DESIGN OF THE FLOOR PLAN REPRESENTED IS SUBJECT TO CHANGE WITHOUT NOTICE.



ELECTRICAL LEGEND

- CEILING LIGHT FIXTURE
- WALL LIGHT FIXTURE
- 7" LED DISK
- 10" LED DISK
- CEILING FAN
- FLOOD LIGHT FIXTURE
- DUPLEX FLOOR OUTLET
- NETWORK
- NETWORK/CABLE
- SWITCH
- 3-WAY SWITCH
- 4-WAY SWITCH
- MOTION SENSOR SWITCH
- EXHAUST FAN
- EXHAUST FAN/LIGHT
- SCONCE LIGHT FIXTURE

OPTION: MEDIA ROOM

HARPER
MILL FARMS

JEFF LINDSEY
COMMUNITIES
Live your dream.

SQUARE FOOTAGE:

FIRST FLOOR:	2,465
SECOND FLOOR:	1,367
TOTAL:	3,832

*THE DRAWING(S) ON THIS PAGE ARE A GRAPHICAL REPRESENTATION ONLY. PLEASE CONSULT YOUR AGENT FOR SPECIFIC INFORMATION REGARDING THIS FLOOR PLAN. THE DESIGN OF THE FLOOR PLAN REPRESENTED IS SUBJECT TO CHANGE WITHOUT NOTICE.